



FOR SALE

Tonkawood Office Condo's Minnetonka, MN

PRICE REDUCED!!

FEATURES

Great visibility off Highway
7 in Minnetonka

2,888sf - 3,143 sf available

Custom design you own
interior space

Private entrances

Beautifully landscaped

Luxury offices, Conference
room, Reception area &
Kitchenette

BUILDING FACTS

Year Built: 2006

Ample Parking

2010 Taxes:
\$9,360.88

Association Dues:
\$350/ Mo.

Presented By

Arrow Real Estate

Chad Weeks
612.619.9911 Cell
cweeks@arrowcos.com

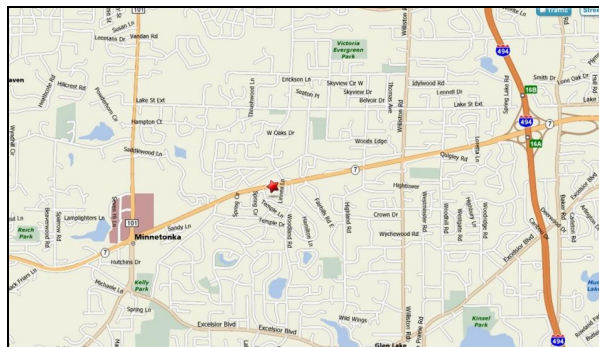
Jeff Penfield
612.325-2067 Cell
jpenfield@arrowcos.com

763.424.6355 Office
763.424.7980 Fax
www.arrowcos.com



OVERVIEW

Great opportunity to purchase office condos in the West metro area. Located in Minnetonka conveniently off Highway 7. Tonkawood Office Park is a “must see”!



“Partially Complete” Pricing: **“Shell Condition” Pricing:**

2,888sf \$245,480

3,143sf \$267,155

2,888sf \$245,480

3,143sf \$267,155

***“Financing Available By
Americana Community Bank in Maple Grove”***

Aerial & Map

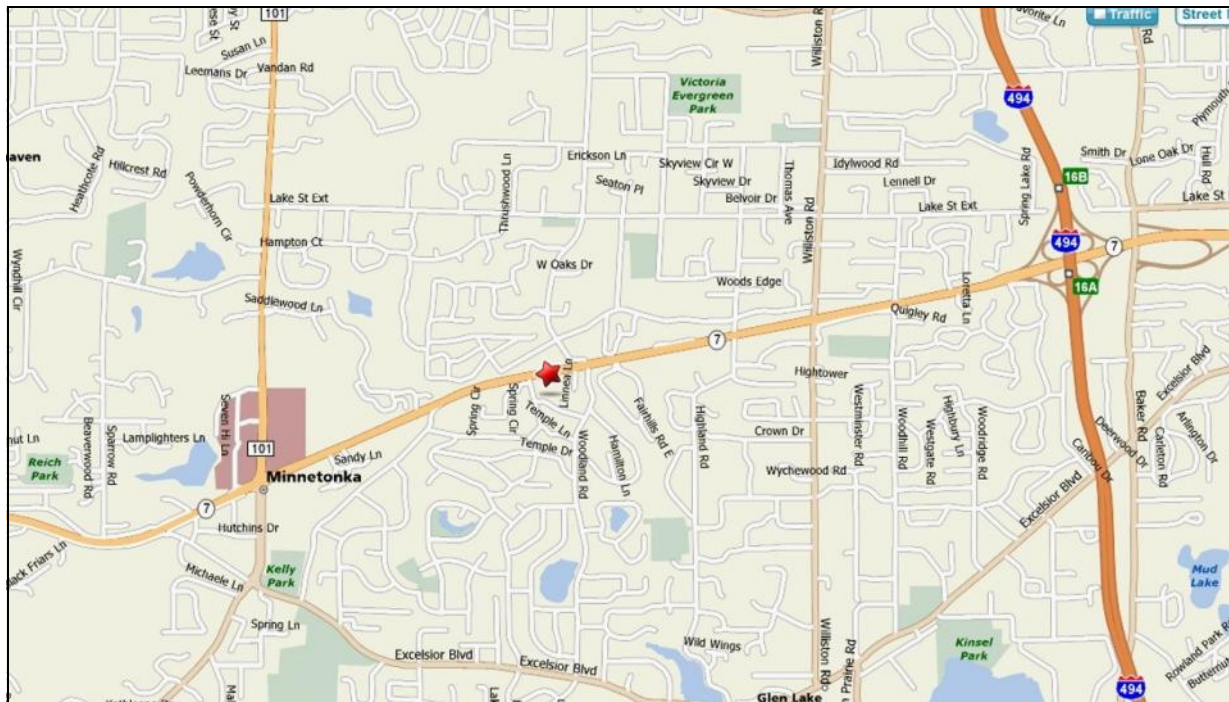
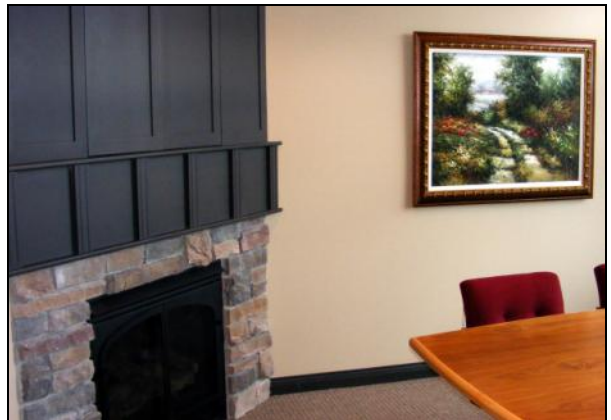
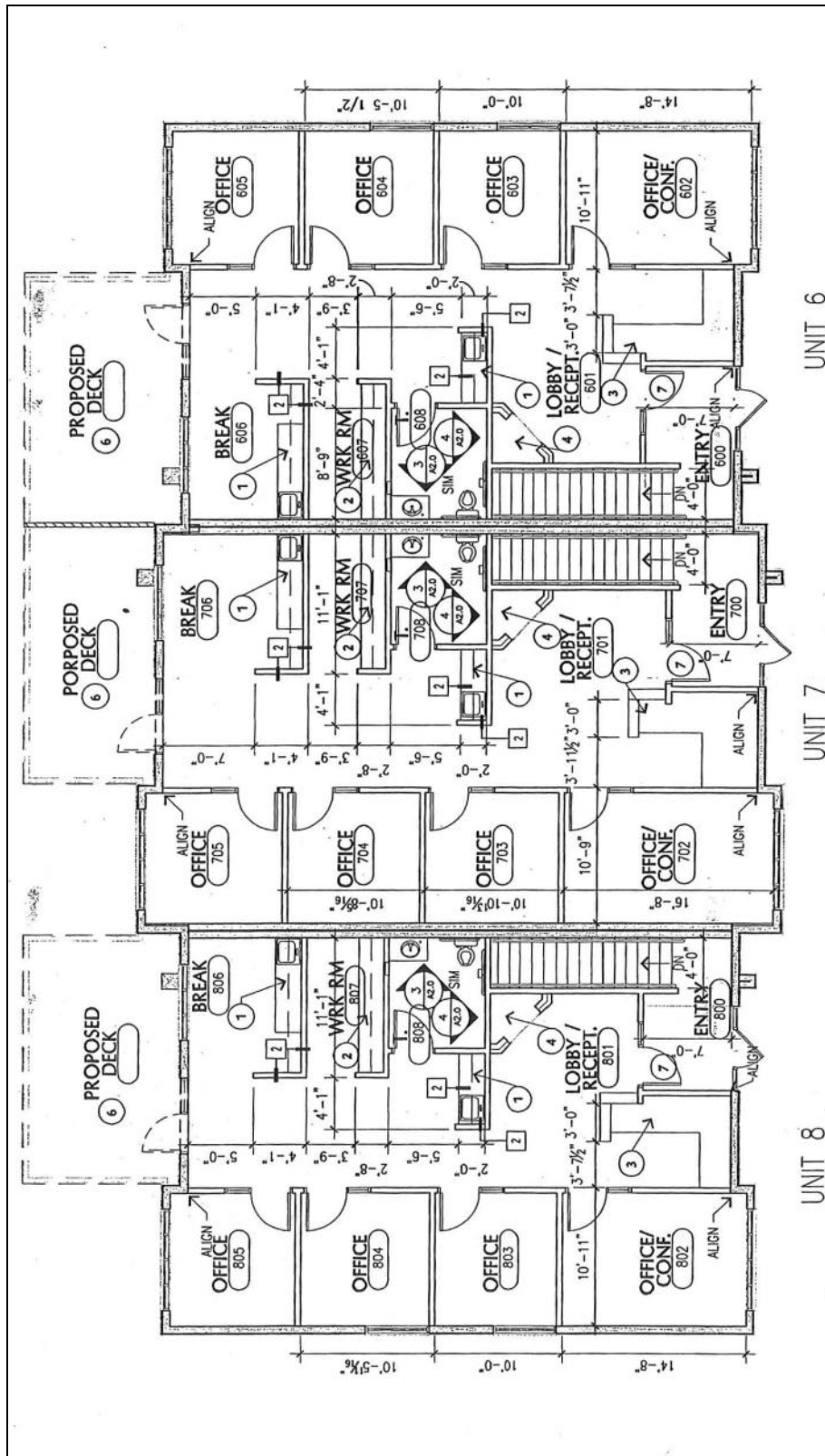


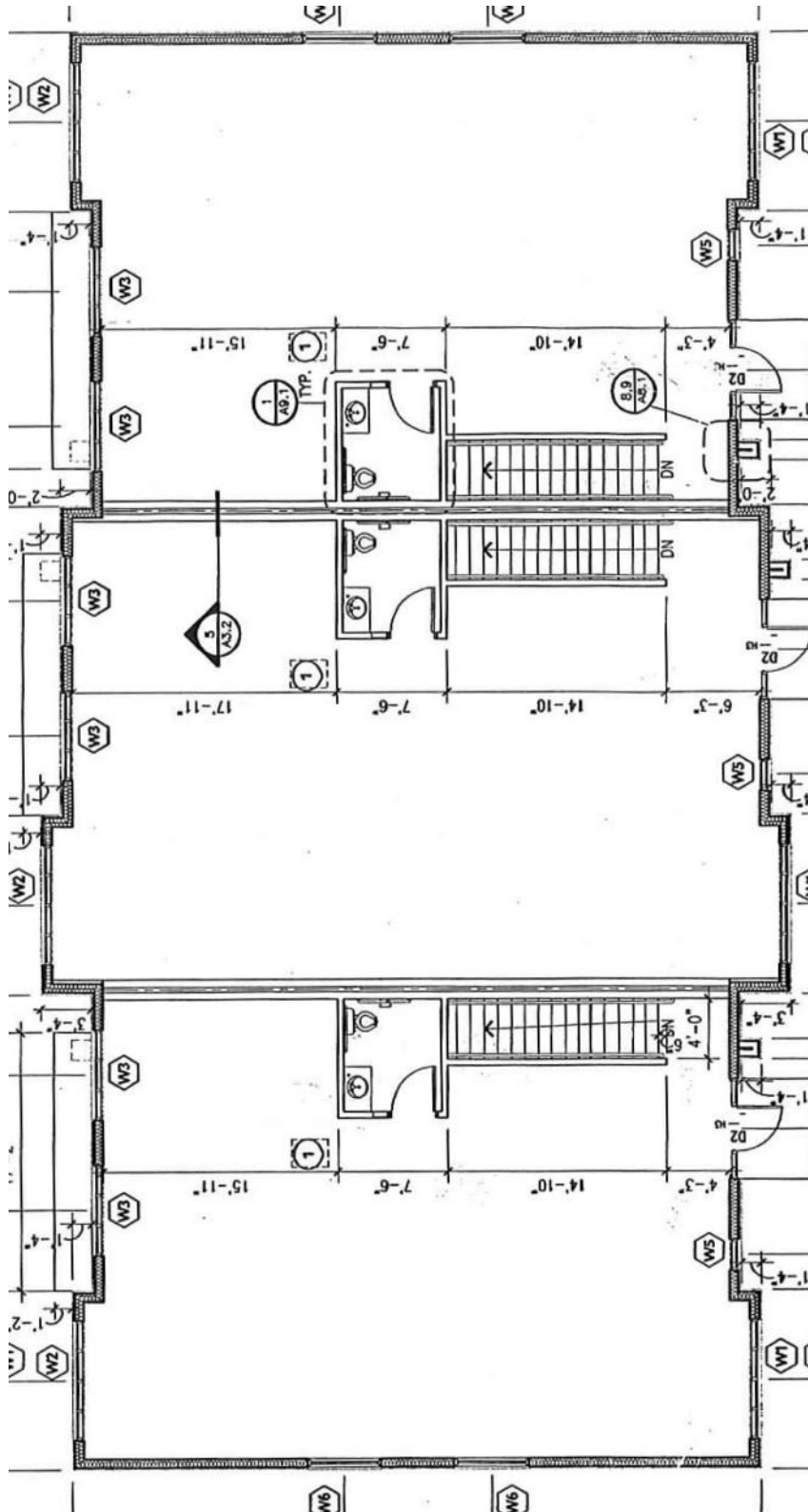
Photo Gallery



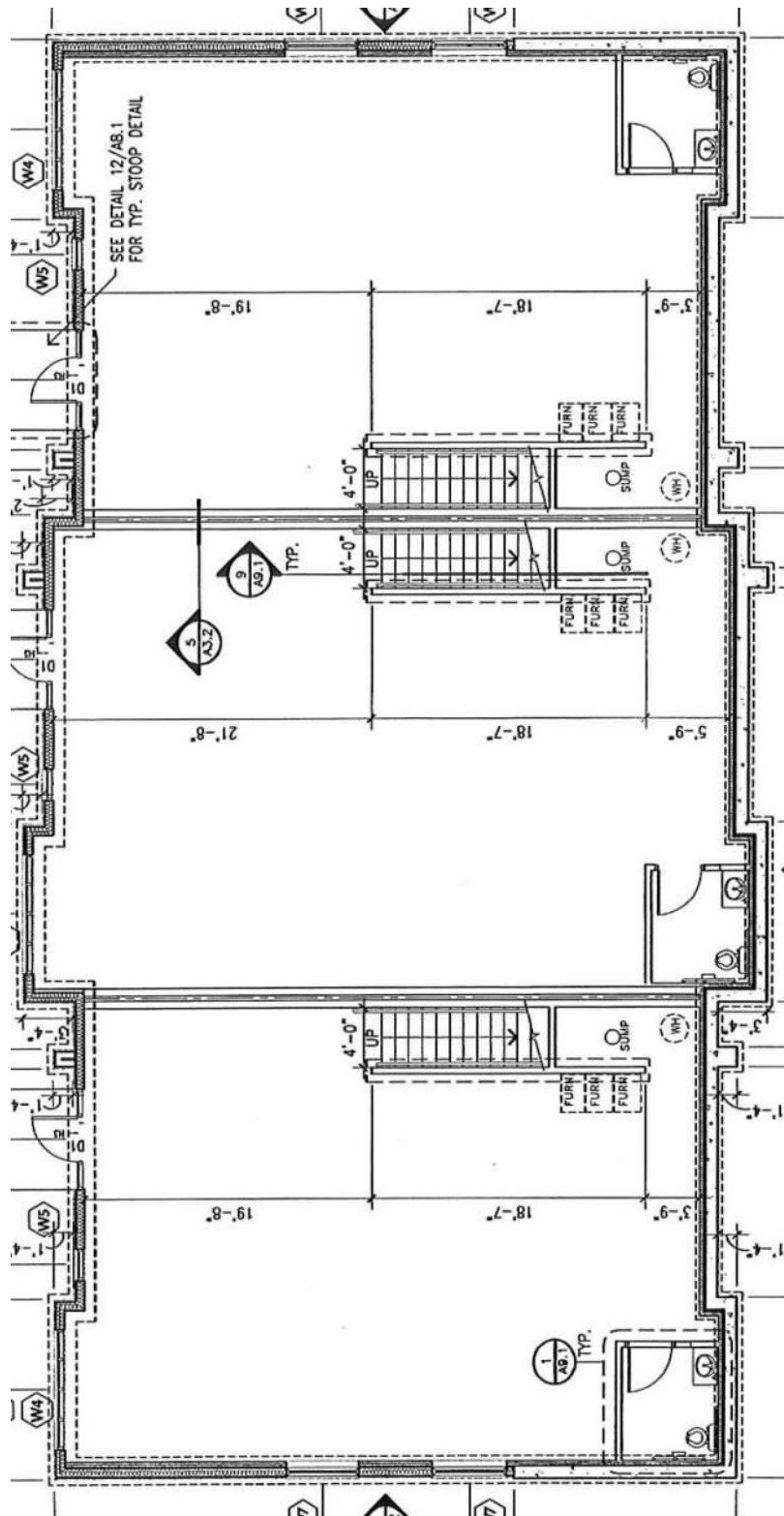
Sample Floor Plan



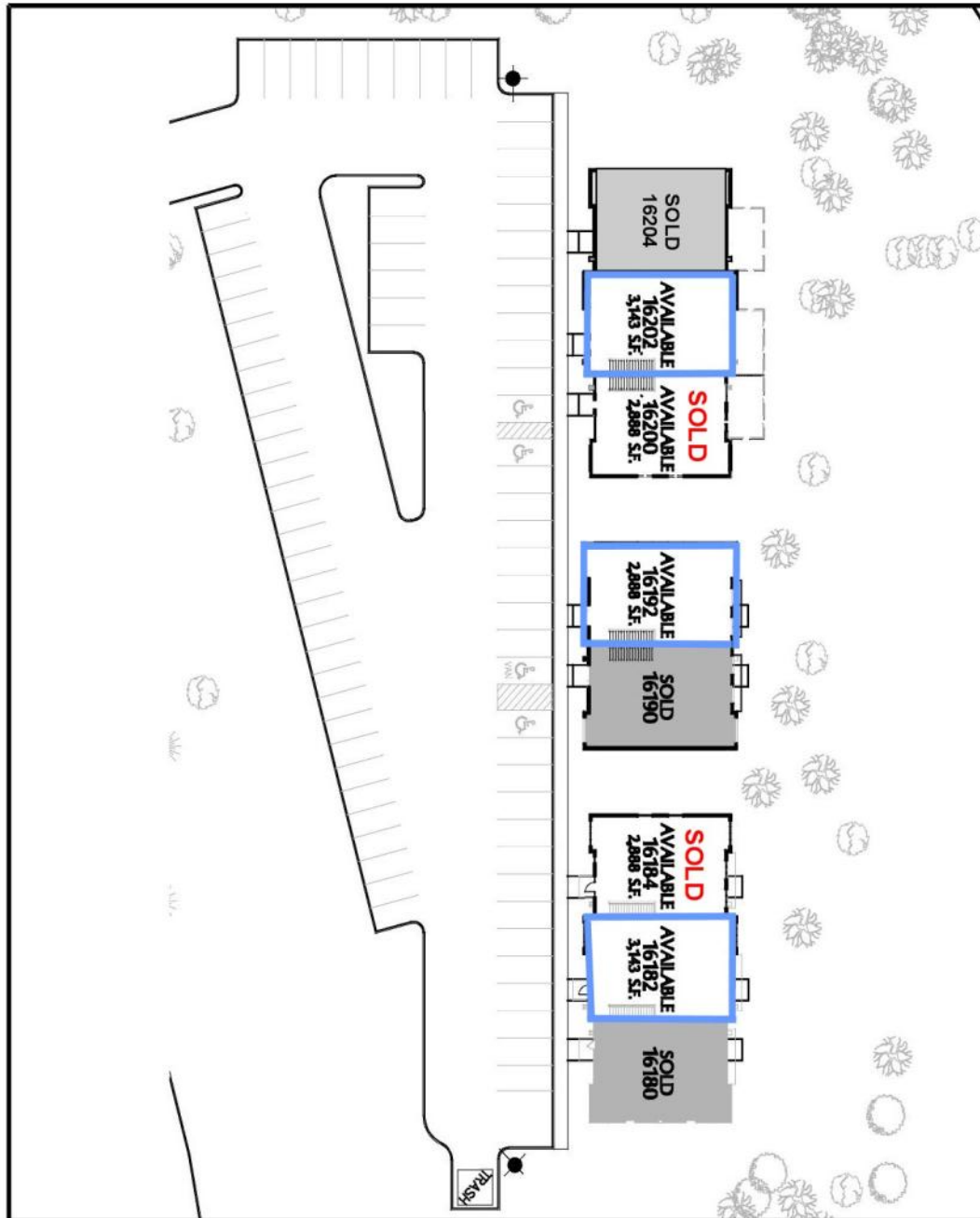
Shell Floor Plan - Main Level



Shell Floor Plan - Lower Level



Site Plan



**Mohagen
Hansen
Architectural
Group**



1100 Twelve Oaks Center Dr.
Suite 200
Minnetonka, MN 55301

Tel: 855.438.7400
Fax: 855.438.7440
www.mohagenhansen.com

SOLD: N.T.S.
DATE: 7-29-2009
PROJECT NO.: PENDING
DRAWN BY: B. SWILEY
COMPUTER PLOT: John Jankowski/jankowski.com

SHEET DESCRIPTION:
**TONKA WOODS
OFFICE CONDOMINIUMS
SITE PLAN
MINNETONKA, MN**

SHEET NUMBER:
**1
A2.0**

Demographics

Demographic Summary Report

Bldg 1

16180 Highway 7, Minnetonka, MN 55345

Building Type: Class B Office

Class: B


RBA: 8,920 SF

Typical Floor: 8,920 SF

Total Available: 0 SF

% Leased: 100%

Rent/SF/Yr: -



Radius	1 Mile		3 Mile		5 Mile	
Population						
2013 Projection	6,765		44,892		134,931	
2008 Estimate	6,717		45,172		134,828	
2000 Census	6,668		45,992		134,297	
Growth 2008 - 2013	0.71%		-0.62%		0.08%	
Growth 2000 - 2008	0.73%		-1.78%		0.40%	
2008 Population by Hispanic Origin	99		690		3,660	
2008 Population By Race	6,717		45,172		134,828	
White	6,458	96.14%	42,801	94.75%	122,125	90.58%
Black or African American	35	0.52%	483	1.07%	3,552	2.63%
American Indian and Alaska Native	1	0.01%	104	0.23%	474	0.35%
Asian	129	1.92%	979	2.17%	4,983	3.70%
Native Hawaiian and Pacific Islander	1	0.01%	18	0.04%	84	0.06%
Other Race	29	0.43%	272	0.60%	1,444	1.07%
Two or More Races	64	0.95%	514	1.14%	2,167	1.61%
Households						
2013 Projection	2,532		16,922		56,253	
2008 Estimate	2,483		16,910		55,810	
2000 Census	2,410		16,984		54,818	
Growth 2008 - 2013	1.97%		0.07%		0.79%	
Growth 2000 - 2008	3.03%		-0.44%		1.81%	
Owner Occupied	2,316	93.27%	15,089	89.23%	40,677	72.88%
Renter Occupied	167	6.73%	1,821	10.77%	15,132	27.11%
2008 Households by HH Income	2,482		16,909		55,810	
Income Less Than \$15,000	65	2.62%	525	3.10%	2,860	5.12%
Income: \$15,000 - \$24,999	83	3.34%	600	3.55%	3,134	5.62%
Income: \$25,000 - \$34,999	92	3.71%	771	4.56%	4,132	7.40%
Income: \$35,000 - \$49,999	206	8.30%	1,731	10.24%	7,273	13.03%
Income: \$50,000 - \$74,999	457	18.41%	2,697	15.95%	10,249	18.36%
Income: \$75,000 - \$99,999	384	15.47%	2,695	15.94%	7,948	14.24%
Income: \$100,000 - \$149,999	704	28.36%	4,017	23.76%	10,072	18.05%
Income: \$150,000 - \$249,999	308	12.41%	2,427	14.35%	6,099	10.93%
Income: \$250,000 - \$499,999	119	4.79%	933	5.52%	2,591	4.64%
Income: \$500,000 or more	64	2.58%	513	3.03%	1,452	2.60%
2008 Avg Household Income	\$121,072		\$124,150		\$107,601	
2008 Med Household Income	\$97,005		\$94,763		\$75,808	
2008 Per Capita Income	\$44,803		\$46,623		\$44,869	



