



Industrial Condo FOR SALE

**13025 George Weber Drive #2
Rogers, MN**

Sale Price: \$738,000

FEATURES

Outstanding Image

High End Interior Finishes

Attractive Smooth Panel
Pre-Cast Wall Construction

Located On An Excellent
Corner Lot

Heavy Power

18' Clear Height

BUILDING FACTS

10,542 Total Square Feet

3,712 sf Office Space

3,200 sf Showroom

3,630 Warehouse Space

(2) Loading Docks
12'x12' & 8'x10'

2014 Taxes: \$23,087.92

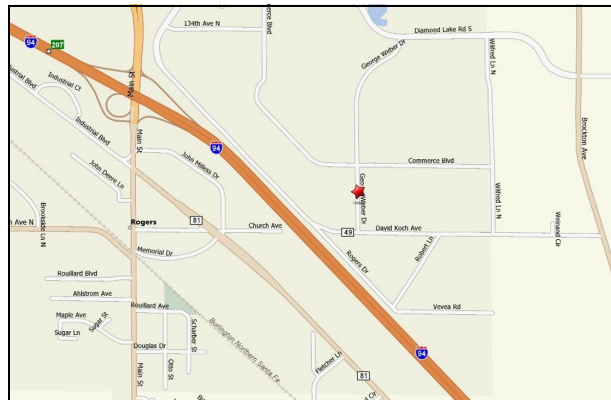
Built in 2003

Presented By
Arrow Real Estate

Chad Weeks
612.619.9911 Cell
cweeks@arrowcos.com

Steve Fischer
612.619-9991 Cell
sfischer@arrowcos.com

763.424.6355 Office
763.424.7980 Fax
www.arrowcos.com



OVERVIEW

Arrow Real Estate Corporation is pleased to
present this Office/Warehouse Condo for sale in
Rogers, MN

Property Facts

Building Size:	10,542 square feet
Year Built:	2003
Zoning:	I-1
Electrical Service:	1,200 amp 208 volt-3phase
HVAC Systems:	Rooftop & Radiant Heat
Fire Protection:	Fully Sprinkled
Clear Height:	18' Warehouse
Roof:	EDPM Ballasted
Bay Depth:	40 x 120
Floor Thickness:	6" Slab on Grade
Docks:	(1) 12' x 12' Dock (1) 8' x 10' Dock
Parking:	Ample Parking
2014 Real Estate Taxes:	\$23,087.92
PID #:	24-120-23-23-0011
2014 Monthly Association Fee:	\$500

Floor Plan

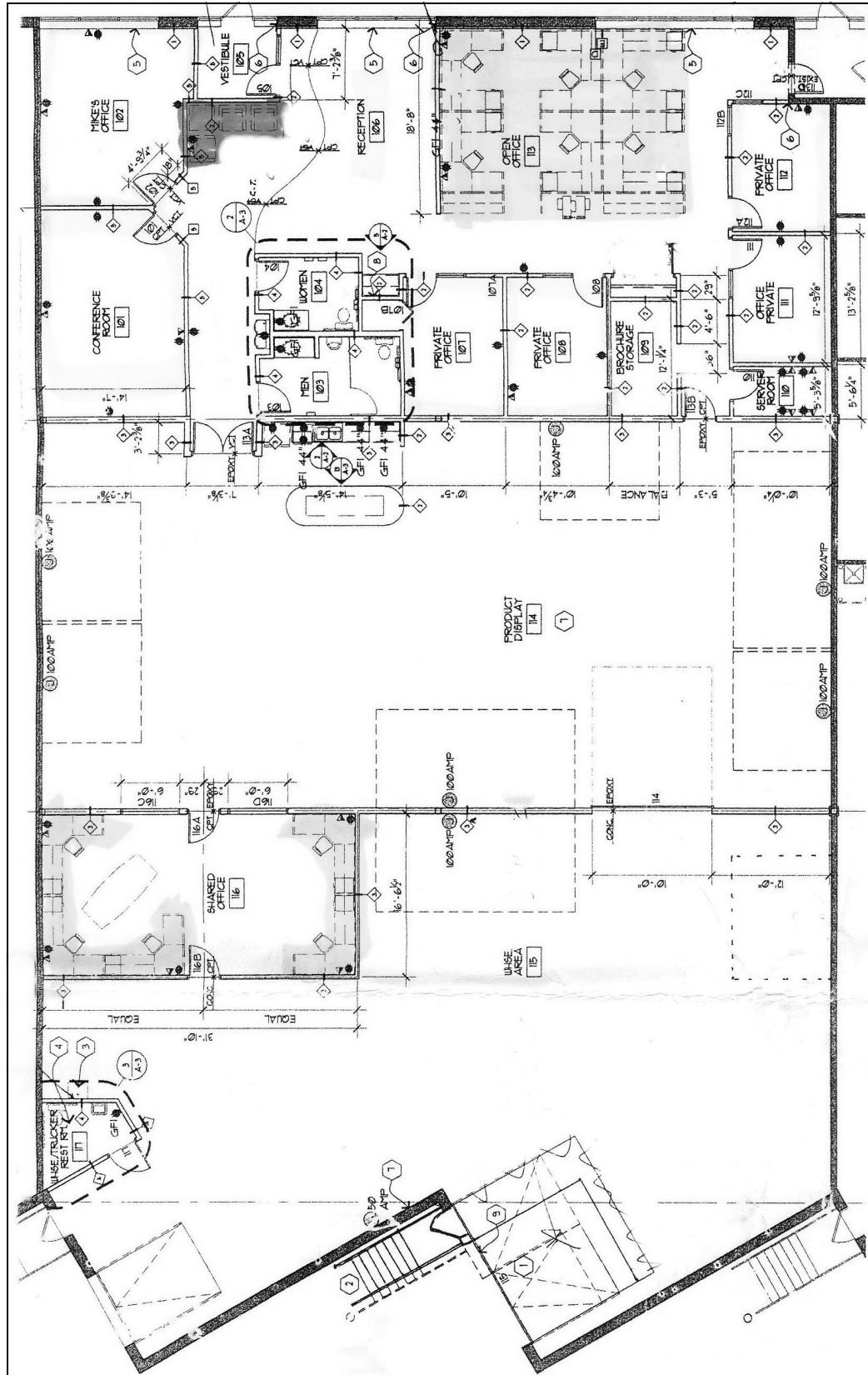
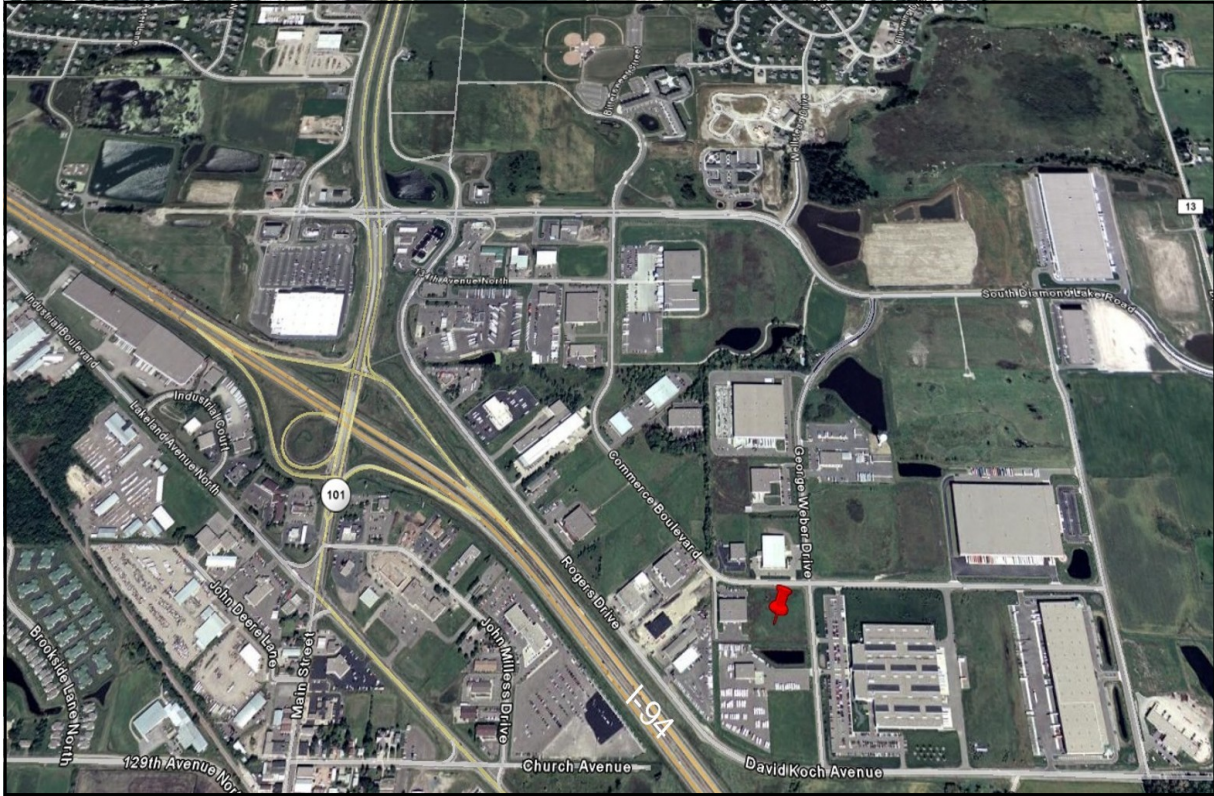


Photo Gallery



Aerial



Map

