



FOR LEASE

FEATURES

Located off
County Road 81 and
Zachary Lane

Easy access to I-94 and
Hwy 169

Heavy Power

BUILDING FACTS

9,041 Total Warehouse
Square Feet Available

Pre-cast Construction

16' Clear height

(2) Dock doors
(2) Drive-in doors

Presented By

Arrow Real Estate

Chad Weeks
612.619.9911 Cell
cweeks@arrowcos.com

Steve Fischer
612.619.9991 Cell
sfischer@arrowcos.com

763.424.6355 Office
763.424.7980 Fax
www.arrowcos.com

11333 91st Avenue N. Maple Grove, MN



OVERVIEW

Arrow Real Estate Corporation is pleased to present this warehouse building for lease located in Maple Grove.

Asking Rates

\$4.00 sf Warehouse

\$1.99 sf Taxes

\$1.25 CAM

9,041 sf Warehouse Available

Don't miss out on this opportunity!

Property Facts

Building Size: 23,619 sf
Warehouse space for lease: 9,041 sf

Year Built: 1987

Lot Size: 1.82 acres

Zoning: Industrial

Electrical Service: 600 amp 208 volt-3 phase

Clear Height: 16'

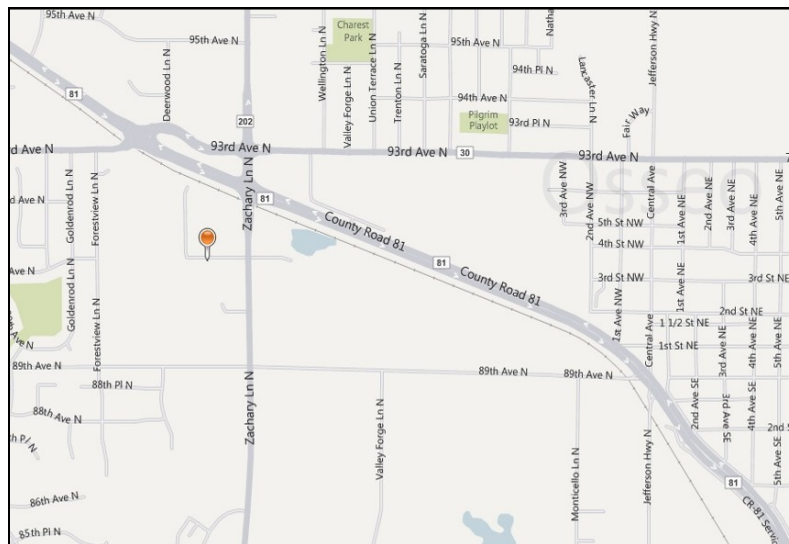
Docks: (2) 8'x10' Dock Doors

Drive-Ins: (2) 12'x14' Doors

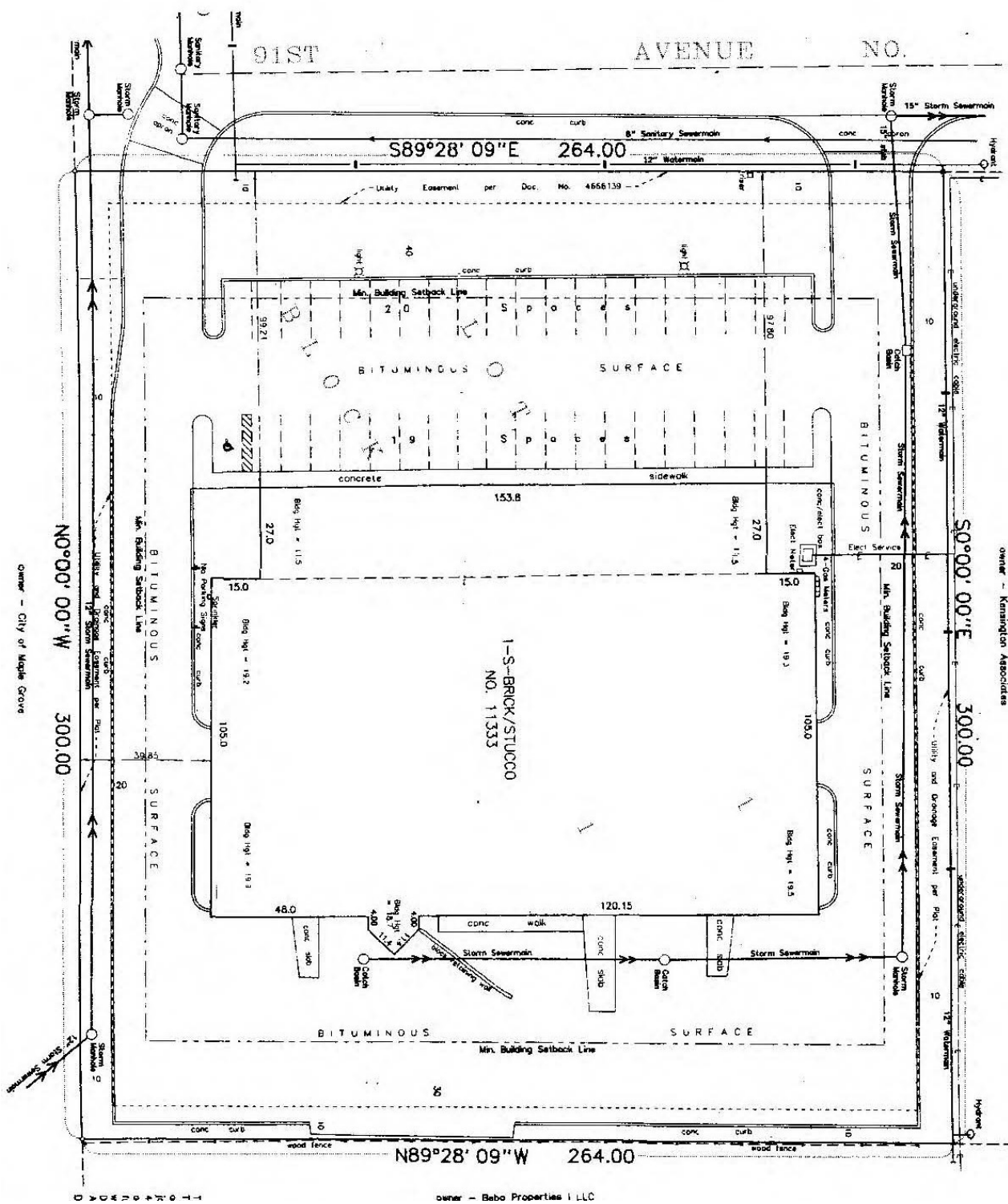
Parking: Ample Parking

Utilities: Xcel Energy - Electric
City Water & Sewer
Center Point Energy - Gas

Aerial & Map




Survey



Demographics

Demographic Summary Report

11333 N 91st Ave, Maple Grove, MN 55369							
Building Type: Industrial		Warehse Avail: -					
RBA:		Office Avail: -					
Land Area: -		% Leased: -					
Total Available:		Rent/SF/Yr: -					
Radius	1 Mile		3 Mile		5 Mile		
Population							
2015 Projection	7,277		47,274		162,320		
2010 Estimate	6,873		45,690		155,120		
2000 Census	6,184		41,989		138,278		
Growth 2010 - 2015	5.90%		3.50%		4.60%		
Growth 2000 - 2010	11.20%		8.80%		12.20%		
2010 Population by Hispanic Origin	176		1,041		5,928		
2010 Population By Race	6,873		45,690		155,120		
White	6,397	93.07%	41,080	89.91%	126,003	81.23%	
Black or African American	77	1.12%	1,354	2.96%	13,115	8.45%	
American Indian and Alaska Native	32	0.47%	169	0.37%	779	0.50%	
Asian	230	3.35%	1,947	4.26%	8,661	5.58%	
Native Hawaiian and Pacific Islander	0	0.00%	25	0.05%	111	0.07%	
Other Race	45	0.65%	322	0.70%	2,663	1.72%	
Two or More Races	93	1.35%	791	1.73%	3,788	2.44%	
Households							
2015 Projection	2,677		17,063		59,582		
2010 Estimate	2,497		16,456		56,834		
2000 Census	2,141		14,938		50,146		
Growth 2010 - 2015	7.20%		3.70%		4.80%		
Growth 2000 - 2010	16.60%		10.20%		13.30%		
Owner Occupied	2,357	94.39%	14,616	88.82%	44,887	78.98%	
Renter Occupied	139	5.57%	1,840	11.18%	11,947	21.02%	
2010 Households by HH Income	2,497		16,456		56,832		
Income Less Than \$15,000	18	0.72%	261	1.59%	1,893	3.33%	
Income: \$15,000 - \$24,999	47	1.88%	450	2.73%	2,239	3.94%	
Income: \$25,000 - \$34,999	75	3.00%	642	3.90%	2,940	5.17%	
Income: \$35,000 - \$49,999	234	9.37%	1,330	8.08%	5,156	9.07%	
Income: \$50,000 - \$74,999	428	17.14%	3,213	19.52%	11,642	20.48%	
Income: \$75,000 - \$99,999	542	21.71%	2,878	17.49%	10,097	17.77%	
Income: \$100,000 - \$149,999	939	37.61%	5,675	34.49%	15,776	27.76%	
Income: \$150,000 - \$249,999	174	6.97%	1,659	10.08%	5,723	10.07%	
Income: \$250,000 - \$499,999	32	1.28%	285	1.73%	1,107	1.95%	
Income: \$500,000 or more	8	0.32%	63	0.38%	259	0.46%	
2010 Avg Household Income	\$100,190		\$102,273		\$98,419		
2010 Med Household Income	\$94,232		\$93,981		\$84,285		
2010 Per Capita Income	\$36,737		\$37,138		\$36,196		

