



INDUSTRIAL BUILDING

5735 Quam Ave. N.E.
St. Michael, MN 55376

FOR LEASE
1,944 SF to 11,899 SF AVAILABLE



FEATURES:

- 11,899 SF Industrial Building "FOR LEASE" in St. Michael, MN.
- 6 suites available (Each bay is approx. 2,000 SF).
- Gross rental rates with separately metered utilities.
- Finished unisex restroom & utility sink included.
- BTS for tenants individual office / warehouse requirements

GROSS LEASE RATE

See Rates Below



AVAILABLE SUITES:

- Suite 100 (1,953 SF) - \$2,700 / month
- Suite 200 (1,944 SF) - \$2,650 / month
- Suite 300 (1,944 SF) - \$2,850 / month (Model)
- Suite 400 (1,944 SF) - \$2,650 / month
- Suite 500 (1,944 SF) - \$2,650 / month
- Suite 600 (2,091 SF) - \$2,700 / month

- * Each suite has 12' x 14' Drive In door.
- * 16' clear height in warehouse.



Steve Fischer
612.619.9991
sfischer@arrowcos.com



Chad Weeks
612.619.9911
cweeks@arrowcos.com

Contact

Phone: 763.424.6355
Fax: 763.424.7980

Arrow Companies
7365 Kirkwood Court N. Suite 335
Maple Grove, MN 55369

Overview	1
Site Plan / Maps	2-3
Floor Plan	4
Photo Gallery	5
City Information	6

www.arrowcos.com



INDUSTRIAL BUILDING

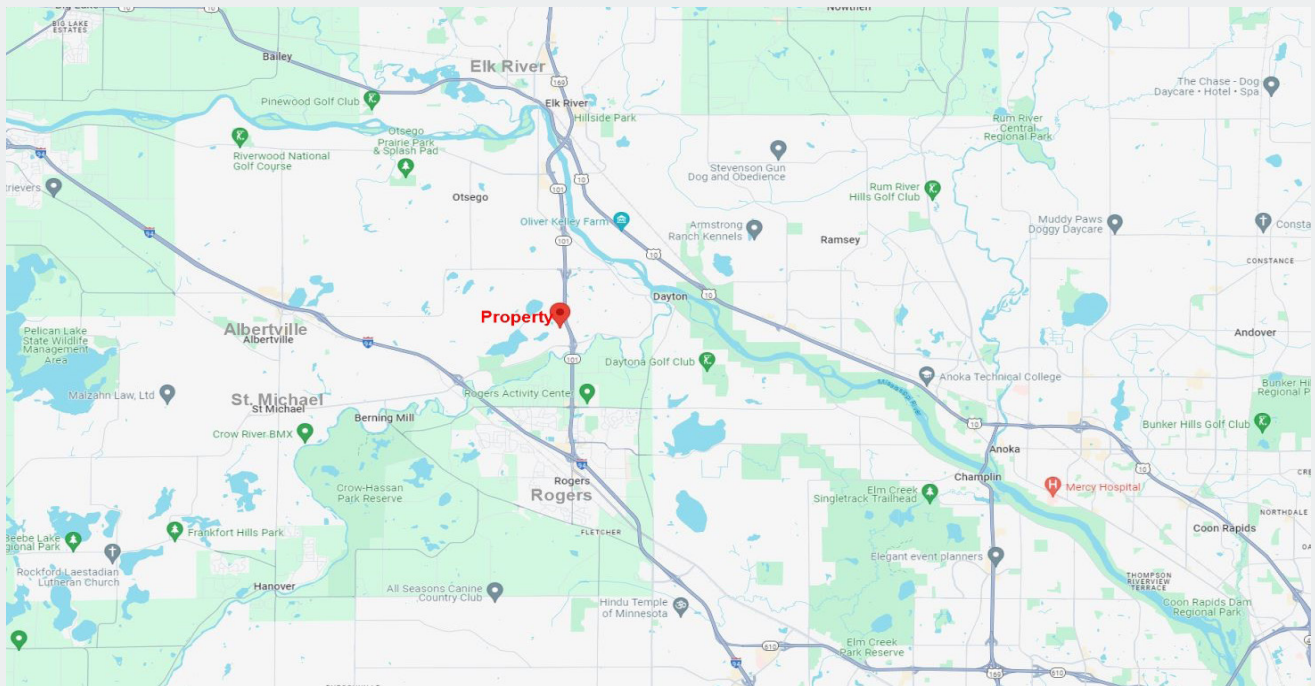
5735 Quam Ave. N.E.

St. Michael, MN 55376

OVERVIEW / MAP

FOR LEASE

1,944 SF to 11,899 SF AVAILABLE



Contact

Phone: 763.424.6355

Fax: 763.424.7980

Arrow Companies

7365 Kirkwood Court N. Suite 335

Maple Grove, MN 55369

www.arrowcos.com

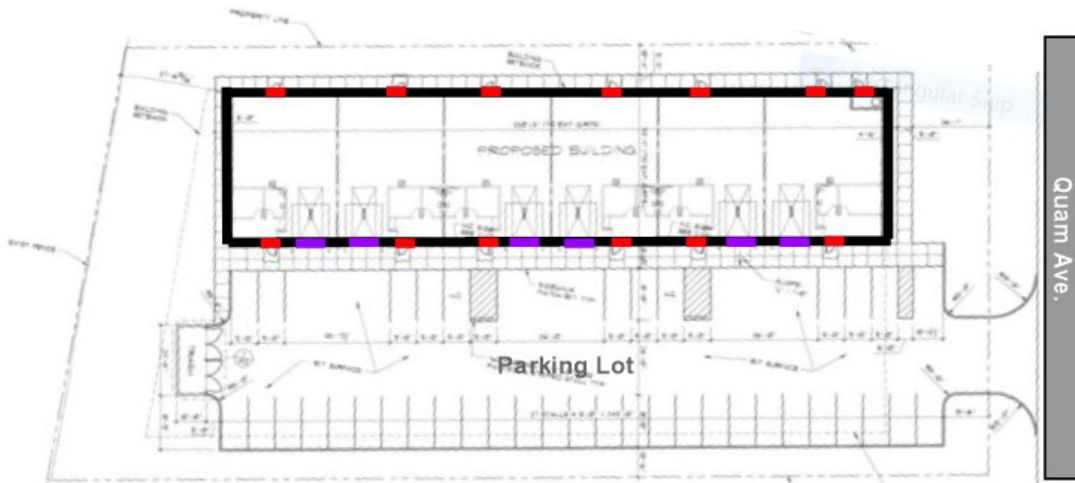


INDUSTRIAL BUILDING

5735 Quam Ave. N.E.
St. Michael, MN 55376

SITE PLAN

FOR LEASE
1,944 SF to 11,899 SF AVAILABLE



Contact

Phone: 763.424.6355
Fax: 763.424.7980

Arrow Companies

7365 Kirkwood Court N. Suite 335
Maple Grove, MN 55369

www.arrowcos.com

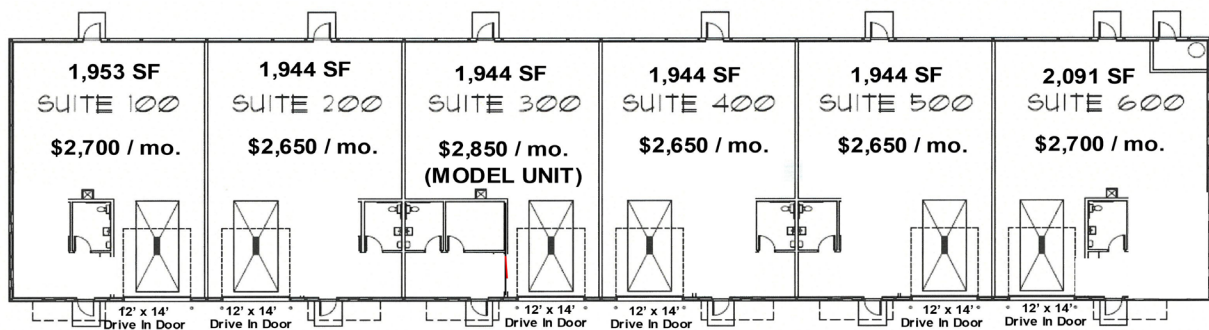


INDUSTRIAL BUILDING

5735 Quam Ave. N.E.
St. Michael, MN 55376

FLOOR PLANS

FOR LEASE
1,944 SF to 11,899 SF AVAILABLE



QUAM AVENUE BUILDING

Contact

Phone: 763.424.6355
Fax: 763.424.7980

Arrow Companies

7365 Kirkwood Court N. Suite 335
Maple Grove, MN 55369

www.arrowcos.com



INDUSTRIAL BUILDING

5735 Quam Ave. N.E.
St. Michael, MN 55376

PHOTO GALLERY

FOR LEASE

1,944 SF to 11,899 SF AVAILABLE



Contact

Phone: 763.424.6355

Fax: 763.424.7980

Arrow Companies

7365 Kirkwood Court N. Suite 335

Maple Grove, MN 55369

www.arrowcos.com



INDUSTRIAL BUILDING

5735 Quam Ave. N.E.
St. Michael, MN 55376

CITY INFO

FOR LEASE
1,944 SF to 11,899 SF AVAILABLE

St. Michael is a growing community centrally located in the heart of Minnesota along I-94, only 25 minutes to downtown Minneapolis and 35 minutes to St. Cloud. The convenient location offers a small-town feel with safe neighborhoods, good schools, abundant parks, lakes and natural resources; making it a great place to live and raise a family. St. Michael was incorporated as a city in 1890 and currently has a population of 19,029.

St. Michael offers year-round opportunities for residents and businesses alike. Home to numerous large and small businesses, the new Town Center Park, 2,500 acre Crow Hassan Park Reserve, numerous parks and trail systems, two 18-hole golf courses and located within minutes of the Albertville Premium Outlet mall, St. Michael is a great place to call home. The St. Michael Public School District is ranked #16 in the state by U.S. News, making it a top choice for families to send their children.

St. Michael is ranked the #3 best city to live in MN, according to an article released from Life in Minnesota. St. Michael has a medium income near \$86,000 annually and unemployment is low at just a 4.8 percent. St. Michael's cost of living is average for the state average, making it an affordable city to live in with access to excellent school districts and parks.

The City of St. Michael scores high on livability ratings, where it's considered exceptional according to Area Vibes. Crime rates are four percent lower than the Minnesota average.

DEMOGRAPHICS / TRAFFIC COUNTS:

St Michael Population - (5 miles)

2028 Projected - 49,976

2023 Estimate - 47,199

2010 Census - 37,248

2023 Avg Household Income - (5 miles) \$127,855

Traffic Counts

Central Ave. - 19,363 Vehicles Per Day

Contact

Phone: 763.424.6355

Fax: 763.424.7980

Arrow Companies

7365 Kirkwood Court N. Suite 335

Maple Grove, MN 55369

www.arrowcos.com