



**INDUSTRIAL BUILDING**  
5735 Quam Ave. N.E.  
St. Michael, MN 55376

**FOR LEASE**  
**1,944 SF to 11,899 SF AVAILABLE**



**FEATURES:**

- 11,899 SF Industrial Building “FOR LEASE” in St. Michael, MN.
- 6 suites available (Each bay is approx. 2,000 SF).
- Gross rental rates with separately metered utilities.
- Finished unisex restroom & utility sink included.
- BTS for tenants individual office / warehouse requirments

**GROSS LEASE RATE**

**See Rates Below**



**AVAILABLE SUITES:**

- Suite 100 (1,953 SF) - \$2,700 / month
- Suite 200 (1,944 SF) - \$2,650 / month
- Suite 300 (1,944 SF) - \$2,850 / month (Model)
- Suite 400 (1,944 SF) - \$2,650 / month
- Suite 500 (1,944 SF) - \$2,650 / month
- Suite 600 (2,091 SF) - \$2,700 / month

- \* Each suite has 12' x 14' Drive In door.
- \* 16' clear height in warehouse.

Overview .....	1
Site Plan / Maps .....	2-3
Floor Plan .....	4
Photo Gallery .....	5
City Information .....	6



**Steve Fischer**  
612.619.9991  
sfischer@arrowcos.com



**Chad Weeks**  
612.619.9911  
cweeks@arrowcos.com

**Contact**  
Phone: 763.424.6355  
Fax: 763.424.7980  
  
**Arrow Companies**  
7365 Kirkwood Court N. Suite 335  
Maple Grove, MN 55369

[www.arrowcos.com](http://www.arrowcos.com)





## INDUSTRIAL BUILDING

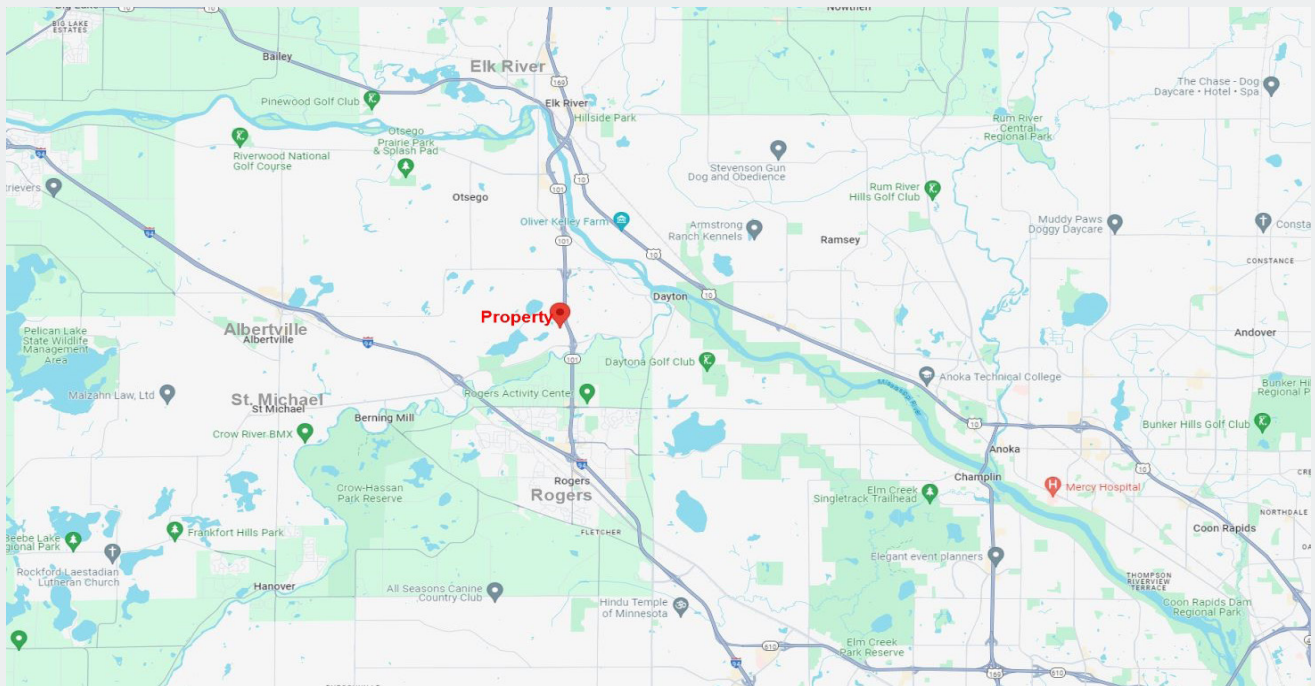
5735 Quam Ave. N.E.

St. Michael, MN 55376

OVERVIEW / MAP

FOR LEASE

1,944 SF to 11,899 SF AVAILABLE



### Contact

Phone: 763.424.6355

Fax: 763.424.7980

### Arrow Companies

7365 Kirkwood Court N. Suite 335

Maple Grove, MN 55369

[www.arrowcos.com](http://www.arrowcos.com)



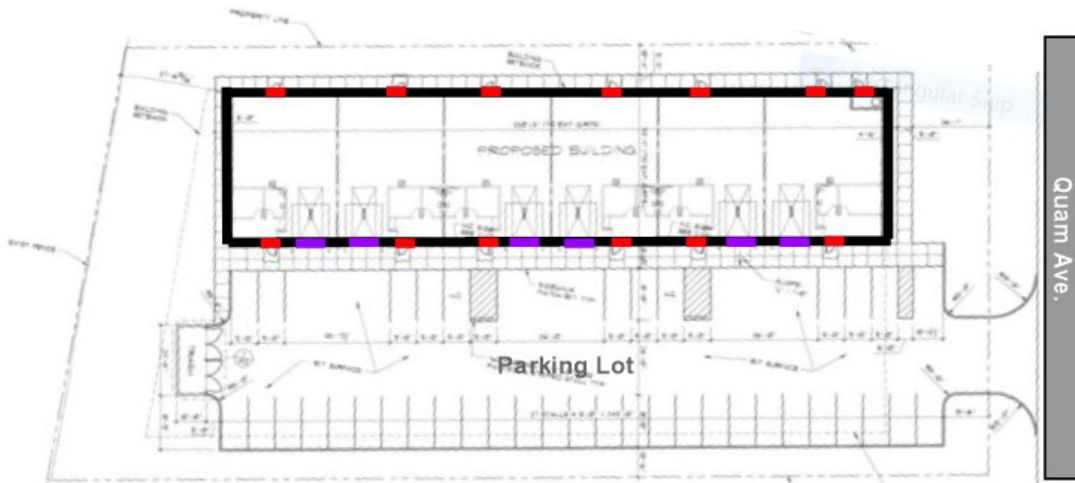


## INDUSTRIAL BUILDING

5735 Quam Ave. N.E.  
St. Michael, MN 55376

### SITE PLAN

**FOR LEASE**  
**1,944 SF to 11,899 SF AVAILABLE**



#### Contact

Phone: 763.424.6355  
Fax: 763.424.7980

#### Arrow Companies

7365 Kirkwood Court N. Suite 335  
Maple Grove, MN 55369

[www.arrowcos.com](http://www.arrowcos.com)

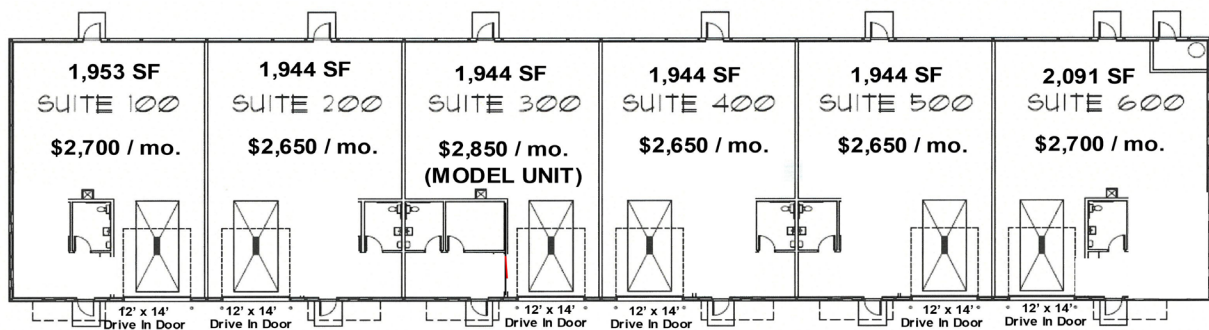


## INDUSTRIAL BUILDING

5735 Quam Ave. N.E.  
St. Michael, MN 55376

### FLOOR PLANS

**FOR LEASE**  
**1,944 SF to 11,899 SF AVAILABLE**



QUAM AVENUE BUILDING

#### Contact

Phone: 763.424.6355  
Fax: 763.424.7980

#### Arrow Companies

7365 Kirkwood Court N. Suite 335  
Maple Grove, MN 55369

[www.arrowcos.com](http://www.arrowcos.com)





## INDUSTRIAL BUILDING

5735 Quam Ave. N.E.  
St. Michael, MN 55376

### PHOTO GALLERY

### FOR LEASE

1,944 SF to 11,899 SF AVAILABLE



#### Contact

Phone: 763.424.6355

Fax: 763.424.7980

#### Arrow Companies

7365 Kirkwood Court N. Suite 335

Maple Grove, MN 55369

[www.arrowcos.com](http://www.arrowcos.com)



## INDUSTRIAL BUILDING

5735 Quam Ave. N.E.  
St. Michael, MN 55376

### CITY INFO

**FOR LEASE**  
**1,944 SF to 11,899 SF AVAILABLE**

St. Michael is a growing community centrally located in the heart of Minnesota along I-94, only 25 minutes to downtown Minneapolis and 35 minutes to St. Cloud. The convenient location offers a small-town feel with safe neighborhoods, good schools, abundant parks, lakes and natural resources; making it a great place to live and raise a family. St. Michael was incorporated as a city in 1890 and currently has a population of 19,029.

St. Michael offers year-round opportunities for residents and businesses alike. Home to numerous large and small businesses, the new Town Center Park, 2,500 acre Crow Hassan Park Reserve, numerous parks and trail systems, two 18-hole golf courses and located within minutes of the Albertville Premium Outlet mall, St. Michael is a great place to call home. The St. Michael Public School District is ranked #16 in the state by U.S. News, making it a top choice for families to send their children.

St. Michael is ranked the #3 best city to live in MN, according to an article released from Life in Minnesota . St. Michael has a medium income near \$86,000 annually and unemployment is low at just a 4.8 percent. St. Michael's cost of living is average for the state average, making it an affordable city to live in with access to excellent school districts and parks.

The City of St. Michael scores high on livability ratings, where it's considered exceptional according to Area Vibes. Crime rates are four percent lower than the Minnesota average.

### DEMOGRAPHICS / TRAFFIC COUNTS:

#### St Michael Population - (5 miles)

2028 Projected - 49,976

2023 Estimate - 47,199

2010 Census - 37,248

2023 Avg Household Income - (5 miles) \$127,855

#### Traffic Counts

Central Ave. - 19,363 Vehicles Per Day

#### Contact

Phone: 763.424.6355

Fax: 763.424.7980

#### Arrow Companies

7365 Kirkwood Court N. Suite 335

Maple Grove, MN 55369

[www.arrowcos.com](http://www.arrowcos.com)