



## Office Space

9040 Quaday Ave

Otsego, MN 55330

**FOR LEASE**  
2,030 SF Available

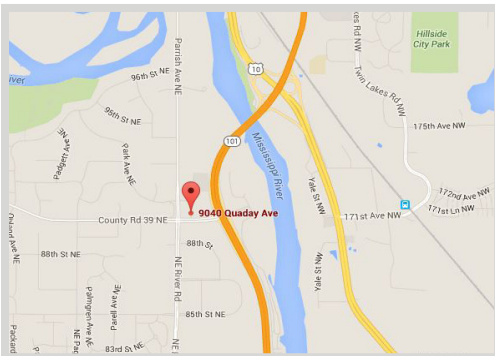


### FEATURES:

- Great Exposure and Easy Access from Hwy 101
- Located along Hwy 101 with high traffic counts
- Building and monument signage available
- Located near numerous restaurants and businesses
- Anchor tenant: Rayus Radiology

**Lease Rate**  
**\$14.00/PSF**

Tax: \$2.30 Cam: \$7.11



### Availabilities

#### ▲ Suite 200 - 2,030 SF

- Breakroom w/ kitchenette, 3 private offices and open work area

Overview .....	1
Aerial Maps .....	2
Floor Plans .....	3
Photo Gallery .....	4-5



**Steve Fischer**  
612.619.9991  
sfischer@arrowcos.com



**Chad Weeks**  
612.619.9911  
cweeks@arrowcos.com

### Contact

Phone: 763.424.6355

Fax: 763.424.7980

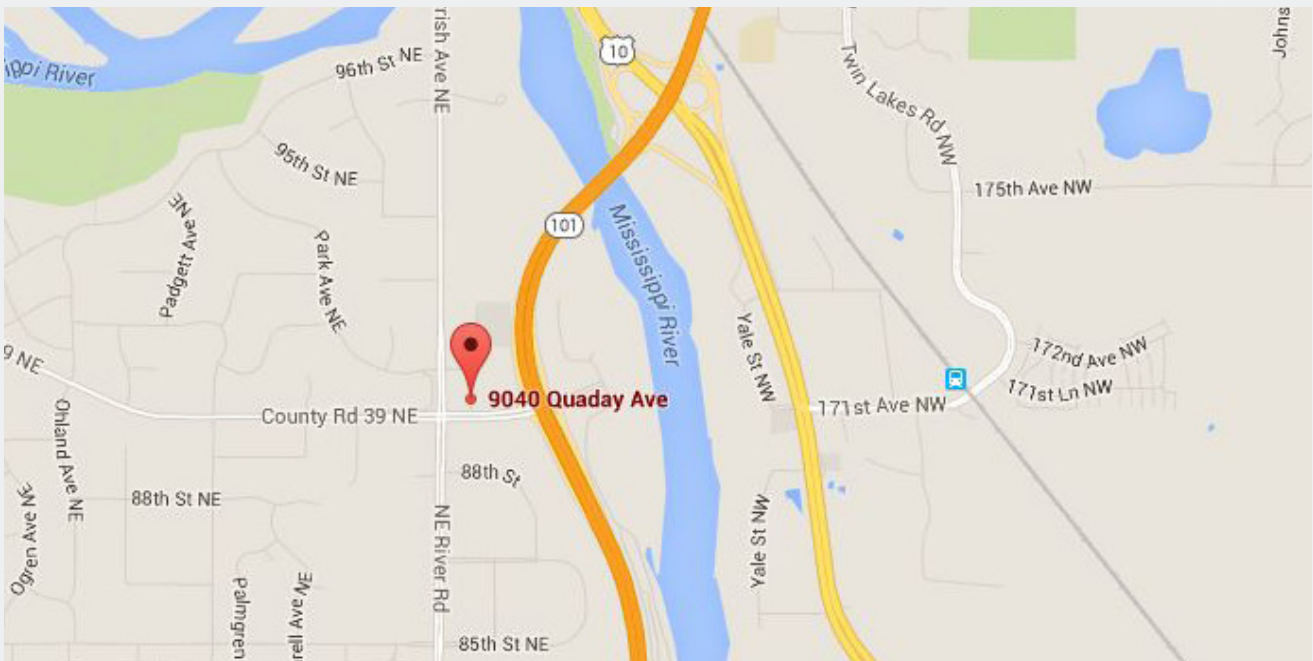
### Arrow Companies

7365 Kirkwood Court N. Suite 335  
Maple Grove, MN 55369

[www.arrowcos.com](http://www.arrowcos.com)

**AERIAL & MAP**

**FOR LEASE**  
2,030 SF Available



**Contact**

Phone: 763.424.6355

Fax: 763.424.7980

**Arrow Companies**

7365 Kirkwood Court N. Suite 335

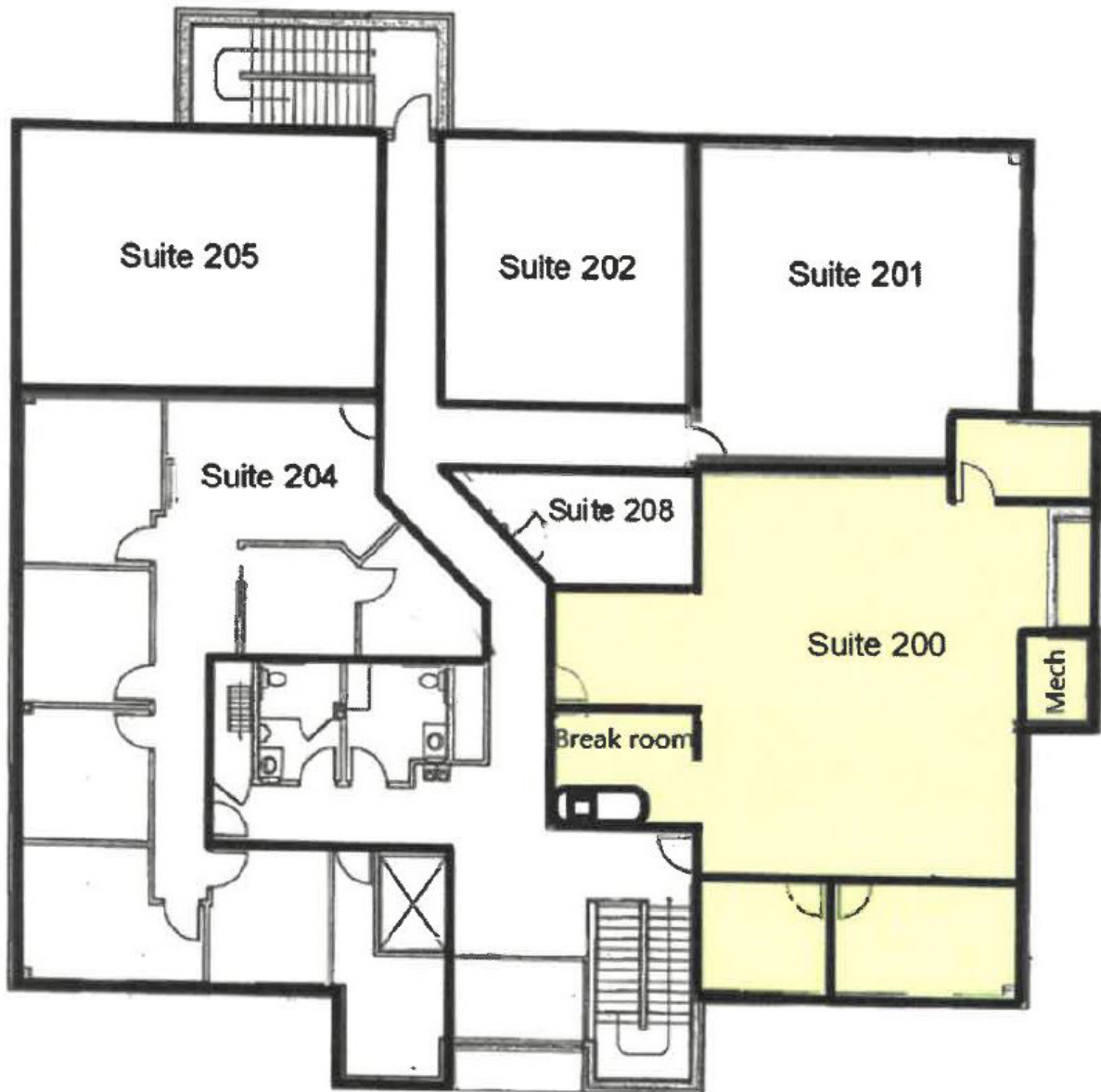
Maple Grove, MN 55369

[www.arrowcos.com](http://www.arrowcos.com)



**FLOOR PLAN**

**FOR LEASE**  
2,030 SF Available



**2ND FLOOR**

**Contact**

Phone: 763.424.6355  
Fax: 763.424.7980

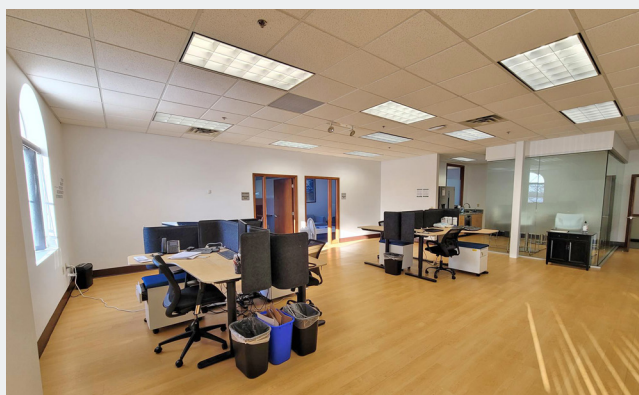
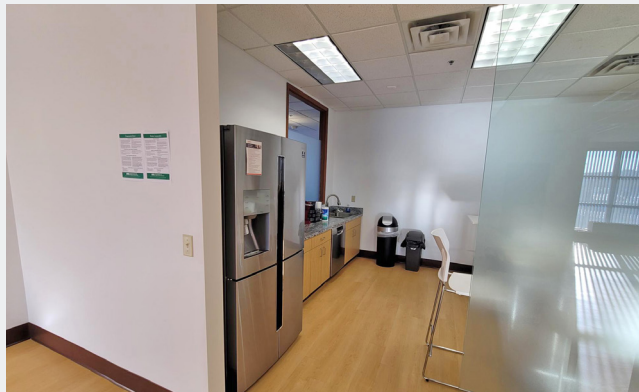
**Arrow Companies**

7365 Kirkwood Court N. Suite 335  
Maple Grove, MN 55369

[www.arrowcos.com](http://www.arrowcos.com)

**PHOTO GALLERY  
SUITE 100**

**FOR LEASE**  
2,030 SF Available



**Contact**

Phone: 763.424.6355  
Fax: 763.424.7980

**Arrow Companies**

7365 Kirkwood Court N. Suite 335  
Maple Grove, MN 55369

[www.arrowcos.com](http://www.arrowcos.com)



**OUTSIDE GALLERY**

**FOR LEASE**  
2,030 SF Available



Side of Building



Front of Building



Aerial Shot

**Contact**

Phone: 763.424.6355  
Fax: 763.424.7980

**Arrow Companies**

7365 Kirkwood Court N. Suite 335  
Maple Grove, MN 55369

[www.arrowcos.com](http://www.arrowcos.com)