

FOR SALE
8,909 SF Office Condo



FEATURES:

- 8,909 SF three level office condo "For Sale" in St. Louis Park, MN.
- Includes multiple offices with windows around the entire building.
- Main Level includes 4 offices, reception desk/ waiting area & bathroom.
- Upper Level includes 12 offices, 4-6 cubicles, Mezz area & storage area.
- Lower level includes 10 offices, Large Breakroom, File Room, Cubicle Area & Men's & Women's Restrooms.

Sales Price:

PRICE REDUCTION!
\$1,199,000



Additional Info:

- ▲ Property Taxes (2021) - \$30,948.75
- ▲ Hennepin County - PID # 04-117-24-34-0036
- ▲ Association Dues - \$1,170 per month.
- ▲ Located near many other businesses and retail.
- ▲ Brick Building constructed in 1984.
- ▲ Server room is air conditioned.

Overview	1
Aerial Maps	2
Site Plan	3
Floor Plans	4-5
Photo Gallery	6-7
City of St. Louis Park Info. .	8



Chad Weeks
612.619.9911
cweeks@arrowcos.com



Jeff Penfield
612.325.2067
jpenfield@arrowcos.com

Contact

Phone: 763.424.6355
Fax: 763.424.7980

Arrow Companies
7365 Kirkwood Court N. Suite 335
Maple Grove, MN 55369

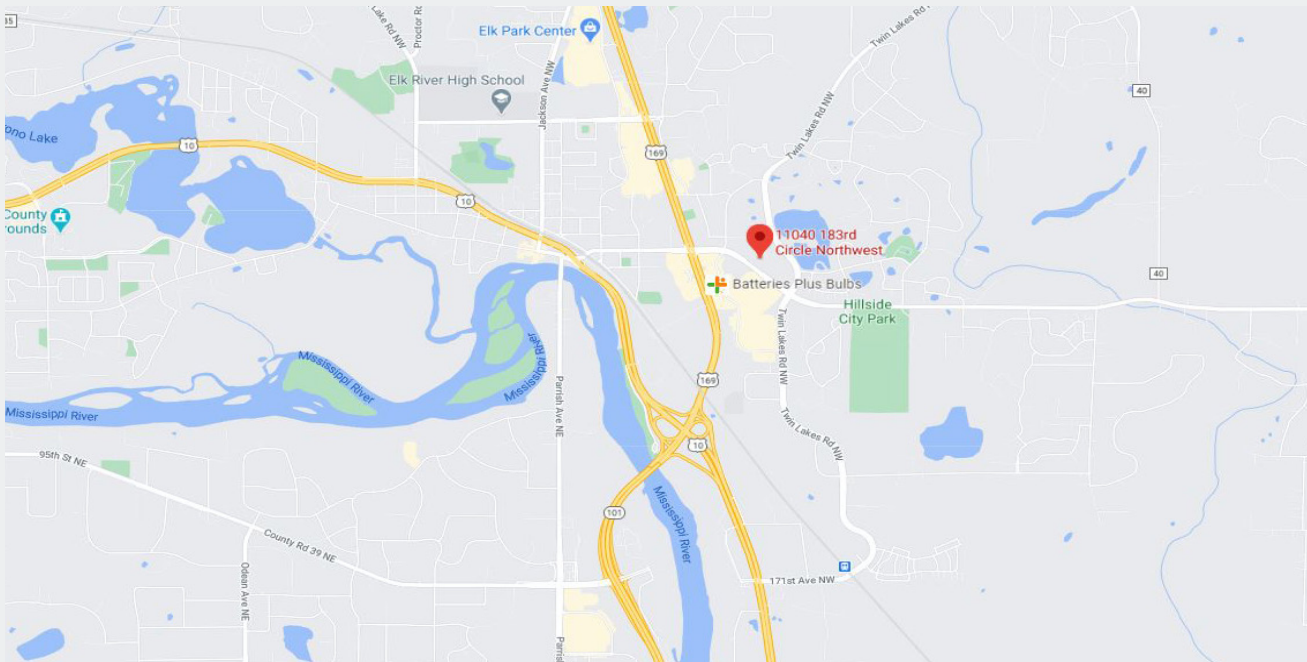


SUNSET RIDGE BUSINESS PARK

5851 Cedar Lake Road
St. Louis Park, MN 55416

AERIAL & MAP

FOR SALE
8,909 SF Office Condo



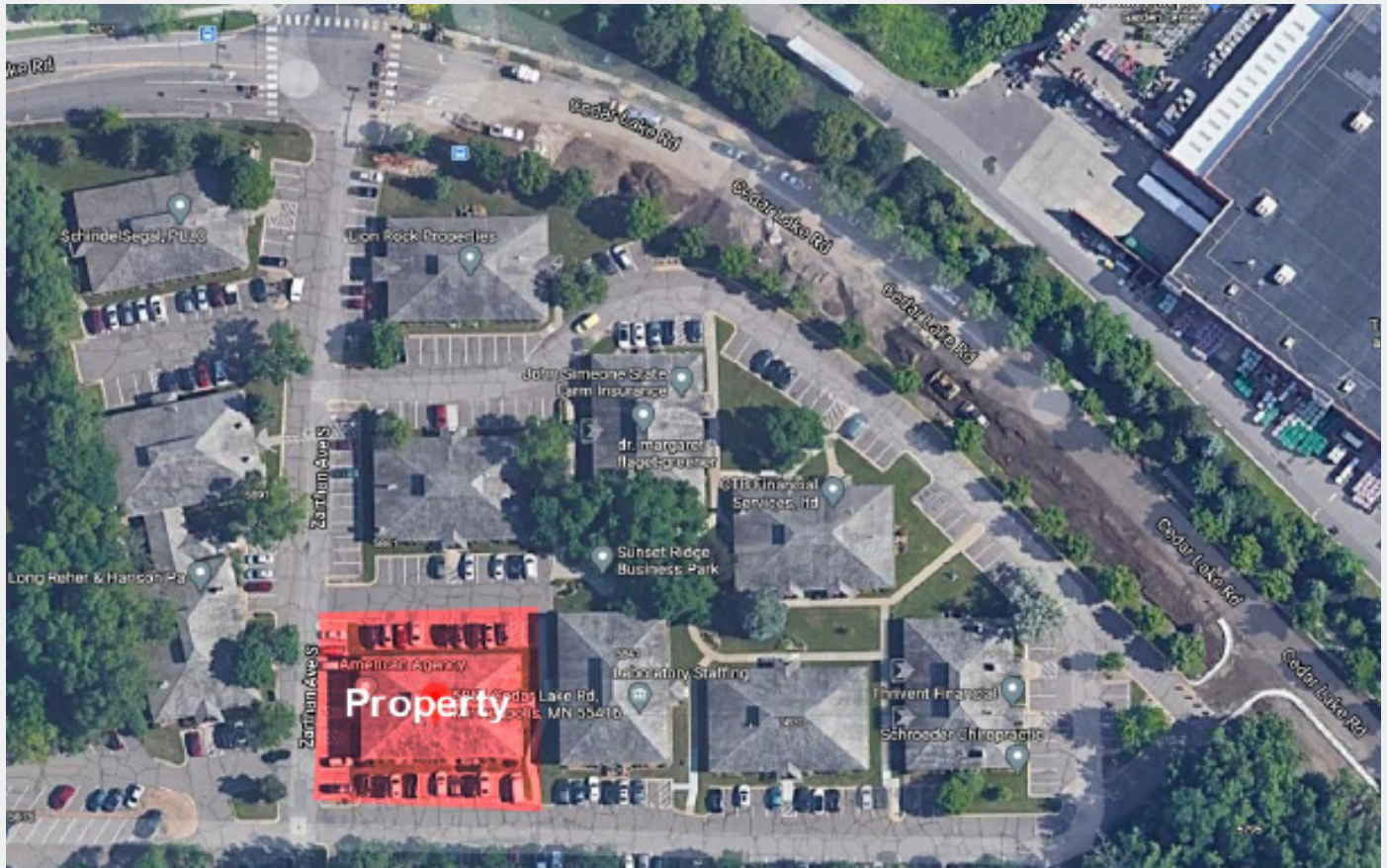
Contact

Phone: 763.424.6355
Fax: 763.424.7980

Arrow Companies

7365 Kirkwood Court N. Suite 335
Maple Grove, MN 55369

www.arrowcos.com



Contact

Phone: 763.424.6355
Fax: 763.424.7980

Arrow Companies

7365 Kirkwood Court N. Suite 335
Maple Grove, MN 55369

www.arrowcos.com

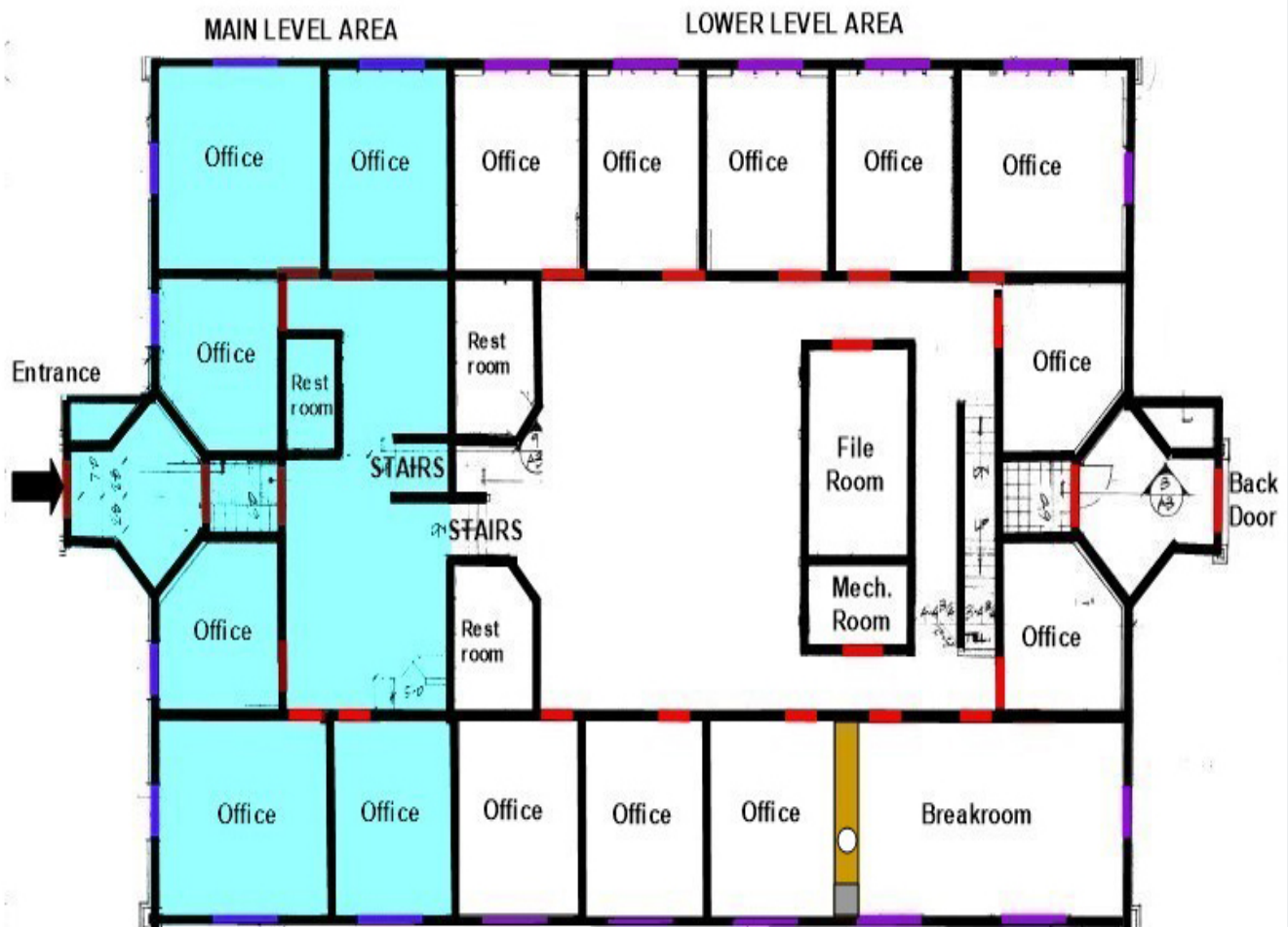


SUNSET RIDGE BUSINESS PARK

5851 Cedar Lake Road
St. Louis Park, MN 55416

FLOOR PLAN MAIN / LOWER LEVEL

FOR SALE
8,909 SF Office Condo



Contact

Phone: 763.424.6355
Fax: 763.424.7980

Arrow Companies

7365 Kirkwood Court N. Suite 335
Maple Grove, MN 55369

www.arrowcos.com



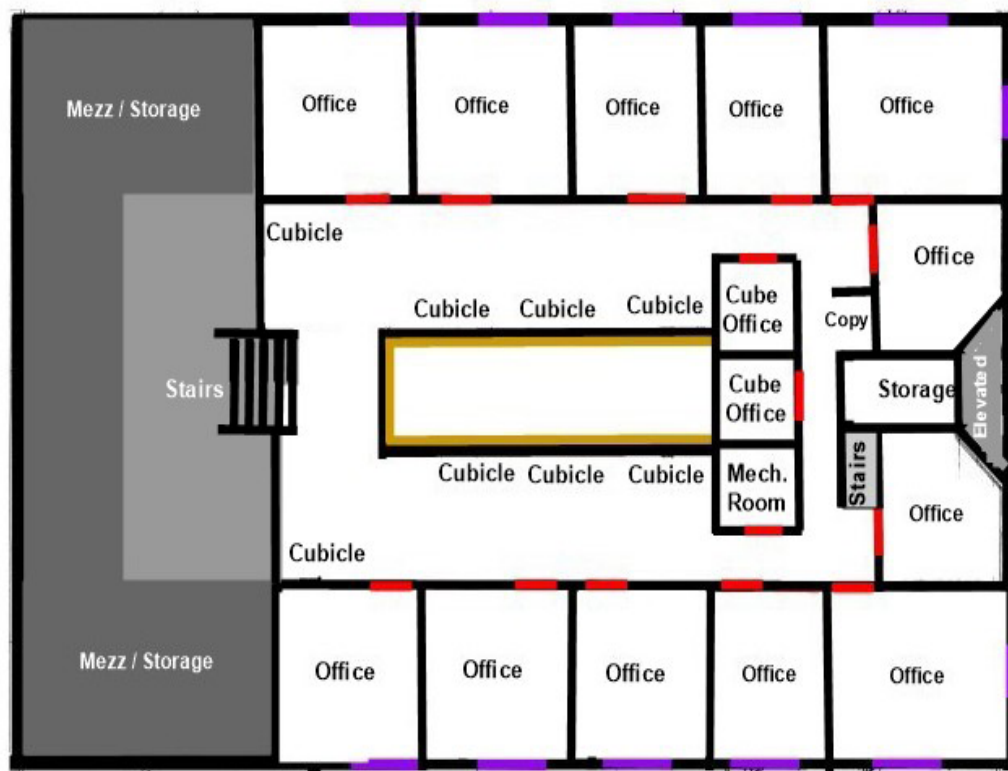
SUNSET RIDGE BUSINESS PARK

5851 Cedar Lake Road
St. Louis Park, MN 55416

FLOOR PLAN UPPER LEVEL

FOR SALE
8,909 SF Office Condo

Upper Level



Contact

Phone: 763.424.6355
Fax: 763.424.7980

Arrow Companies

7365 Kirkwood Court N. Suite 335
Maple Grove, MN 55369

www.arrowcos.com



Reception Desk Area



Office



Office



Office



Lower Level



Lower Level

Contact

Phone: 763.424.6355
Fax: 763.424.7980

Arrow Companies

7365 Kirkwood Court N. Suite 335
Maple Grove, MN 55369

www.arrowcos.com



Lower Level



Breakroom



Office



Office



Main Level



Main Level

Contact

Phone: 763.424.6355
Fax: 763.424.7980

Arrow Companies

7365 Kirkwood Court N. Suite 335
Maple Grove, MN 55369

www.arrowcos.com



SUNSET RIDGE BUSINESS PARK

5851 Cedar Lake Road
St. Louis Park, MN 55416

ST. LOUIS PARK INFO

FOR SALE
8,909 SF Office Condo

Why St. Louis Park

Looking for a place to start and grow your company? Moving your organization to a new location? The City of St. Louis Park is a great place for business; it's centrally located, economically vibrant and business friendly.

Central location

St. Louis Park is an inner suburb of the Twin Cities, located just west of Minneapolis. It's less than 5 miles from downtown and just 15 miles from the Minneapolis/St. Paul International Airport (MSP). It offers convenient, direct access to Interstate 394, U.S. Highway 169, State Highway 7 and State Highway 100, and close proximity to State Highway 62, making it ideal for efficient shipping and transportation. Coming in 2024, the SW light rail service will provide light rail access from Eden Prairie to Minneapolis. St. Louis Park will have 3 station: Beltline, Wooddale and Louisiana.

Vibrant economy

With a population of nearly 50,000 St. Louis Park is currently experiencing vigorous economic growth. Significant business investments are being made in the city. Particularity around the future SWLRT stations. The city is also home to trend-setting redevelopments, such as the national-award-winning Excelsior & Grand and the new West End.

Skilled workforce

The Twin Cities is consistently ranked among the top metropolitan areas for its skilled and productive labor force. Numerous colleges, universities and technical institutions provide employees of local businesses with opportunities for ongoing higher education and cooperative, customized and technical training.

Strong schools

All public schools in St. Louis Park have earned the National School of Excellence Award. This is one of the few suburbs where the city and school district share boundaries, which strengthens resident ties to the community. There are also nearly a dozen private and parochial school options within the city.

Arts, culture and recreation

St. Louis Park is a place that both business owners and employees like to call home. The city offers a wide variety of housing, services and retail shopping. It's also a great city for arts and culture, outdoor activities and plenty of things to do, including Westwood Hills Nature Center, The Rec Center, Veterans' Memorial Amphitheater, 51 parks and 24 miles of trails.

Committed to business growth

City government in St. Louis Park is responsive, efficient and committed to complementary business growth. The St. Louis Park Economic Development Authority (EDA) partners extensively with businesses by providing customized financing solutions to help defray extraordinary costs related to their projects.

Contact

Phone: 763.424.6355
Fax: 763.424.7980

Arrow Companies

7365 Kirkwood Court N. Suite 335
Maple Grove, MN 55369

www.arrowcos.com