



## Bell Tower Commerce

201 Broadway Street W

Osseo, MN 55369

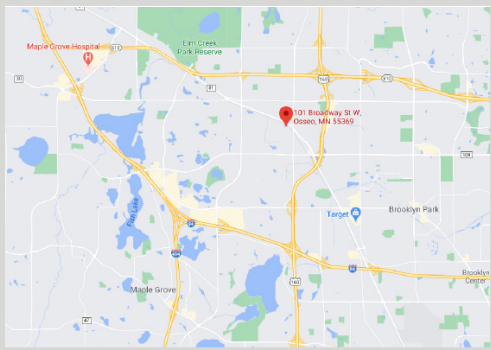
**FOR LEASE**  
10,688 - 64,457 SF



### FEATURES:

- 10,688 - 64,457 SF of Office/Warehouse Space Available FOR LEASE in Osseo, MN.
- Easy Access via US -169, MN-610, & I-94/I-694
- Conveniently located directly off County Rd 81 with great traffic flow and exposure.
- Monument & building signage available
- Warehouse includes Mezz., (3) sets of Restrooms, Breakroom, Training Room, & Office/Work Areas

**Lease Rate**  
**Office - \$9.50/psf**  
**Warehouse - \$5.50/psf**  
Tax: \$2.09 & CAM: \$1.48



### FACTS:

- ▲ Clear Height is 21'
- ▲ 40' x 45' Column Spacing
- ▲ (6) Dock Doors, & (3) Drive- Ins
- ▲ ESFR Fire Protection
- ▲ Electronic Secured Access
- ▲ 100% Air Conditioned

Overview .....	1
Aerial Maps .....	2
Floor Plans/Site Plans .....	3-4
Photo Gallery .....	5-7
Demographics .....	8
Traffic Count .....	9



**Chad Weeks**  
612.619.9911  
cweeks@arrowcos.com



**Steve Fischer**  
612.619.9991  
sfischer@arrowcos.com

### Contact

Phone: 763.424.6355  
Fax: 763.424.7980

**Arrow Companies**  
7365 Kirkwood Court N. Suite 335  
Maple Grove, MN 55369

[www.arrowcos.com](http://www.arrowcos.com)

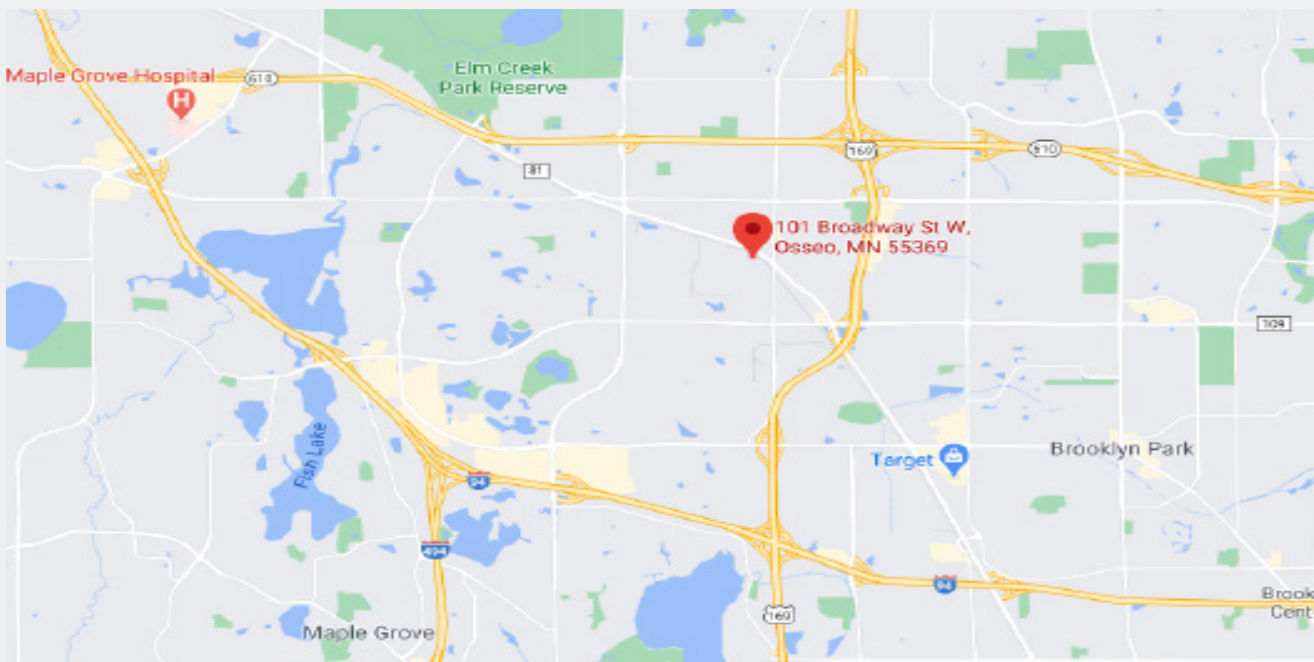


## Bell Tower Commerce

201 Broadway Street W  
Osseo, MN 55369

**AERIAL & MAP**

**FOR LEASE**  
10,688 - 64,457 SF



### Contact

Phone: 763.424.6355  
Fax: 763.424.7980

### Arrow Companies

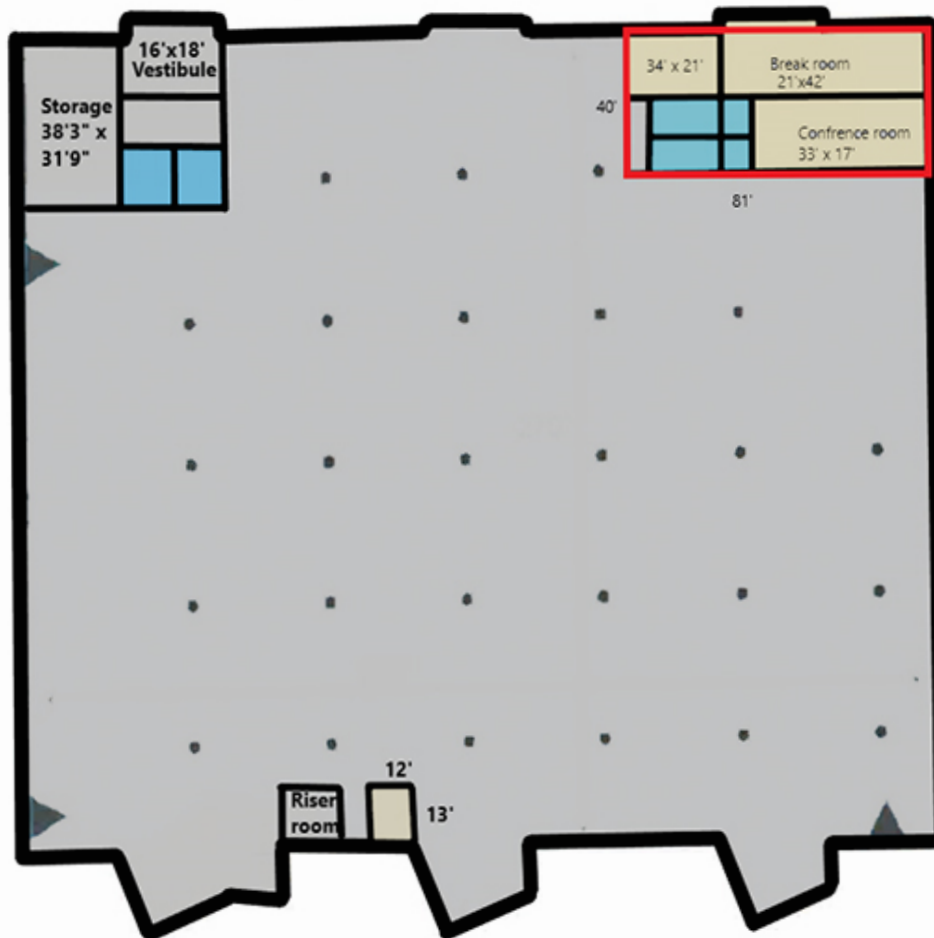
7365 Kirkwood Court N. Suite 335  
Maple Grove, MN 55369

[www.arrowcos.com](http://www.arrowcos.com)

**FLOOR PLAN**

**FOR LEASE**  
10,688 - 64,457 SF

Bell Tower Commerce



-  **Office Space**
-  **Warehouse**
-  **Mezzanine**
-  **Restrooms**

Office SF - 3,684  
Whse SF - 60,773  
Mezz. SF - 3,200  

---

Rentable SF - 67,657

**Contact**

Phone: 763.424.6355

Fax: 763.424.7980

**Arrow Companies**

7365 Kirkwood Court N. Suite 335

Maple Grove, MN 55369



## Bell Tower Commerce

201 Broadway Street W  
Osseo, MN 55369

### SITE PLAN

**FOR LEASE**  
10,688 - 64,457 SF



#### Contact

Phone: 763.424.6355  
Fax: 763.424.7980

#### Arrow Companies

7365 Kirkwood Court N. Suite 335  
Maple Grove, MN 55369

[www.arrowcos.com](http://www.arrowcos.com)



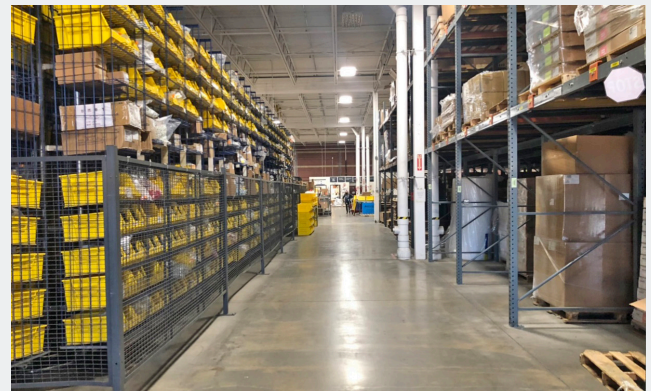


## WAREHOUSE

## Bell Tower Commerce

201 Broadway Street W  
Osseo, MN 55369

**FOR LEASE**  
10,688 - 64,457 SF



### Contact

Phone: 763.424.6355  
Fax: 763.424.7980

### Arrow Companies

7365 Kirkwood Court N. Suite 335  
Maple Grove, MN 55369

[www.arrowcos.com](http://www.arrowcos.com)





## Bell Tower Commerce

201 Broadway Street W  
Osseo, MN 55369

### OFFICE SPACE

**FOR LEASE**  
10,688 - 64,457 SF



Mezz. From Below



Mezz. From Above



Open Office Space



Breakroom



Training Room/Office



Restrooms

#### Contact

Phone: 763.424.6355  
Fax: 763.424.7980

#### Arrow Companies

7365 Kirkwood Court N. Suite 335  
Maple Grove, MN 55369

[www.arrowcos.com](http://www.arrowcos.com)





## Bell Tower Commerce

201 Broadway Street W  
Osseo, MN 55369

### OUTSIDE GALLERY

**FOR LEASE**  
10,688 - 64,457 SF



Front of Building



Aerial Front View



Aerial Back View



Back of Building

#### Contact

Phone: 763.424.6355  
Fax: 763.424.7980

#### Arrow Companies

7365 Kirkwood Court N. Suite 335  
Maple Grove, MN 55369

[www.arrowcos.com](http://www.arrowcos.com)

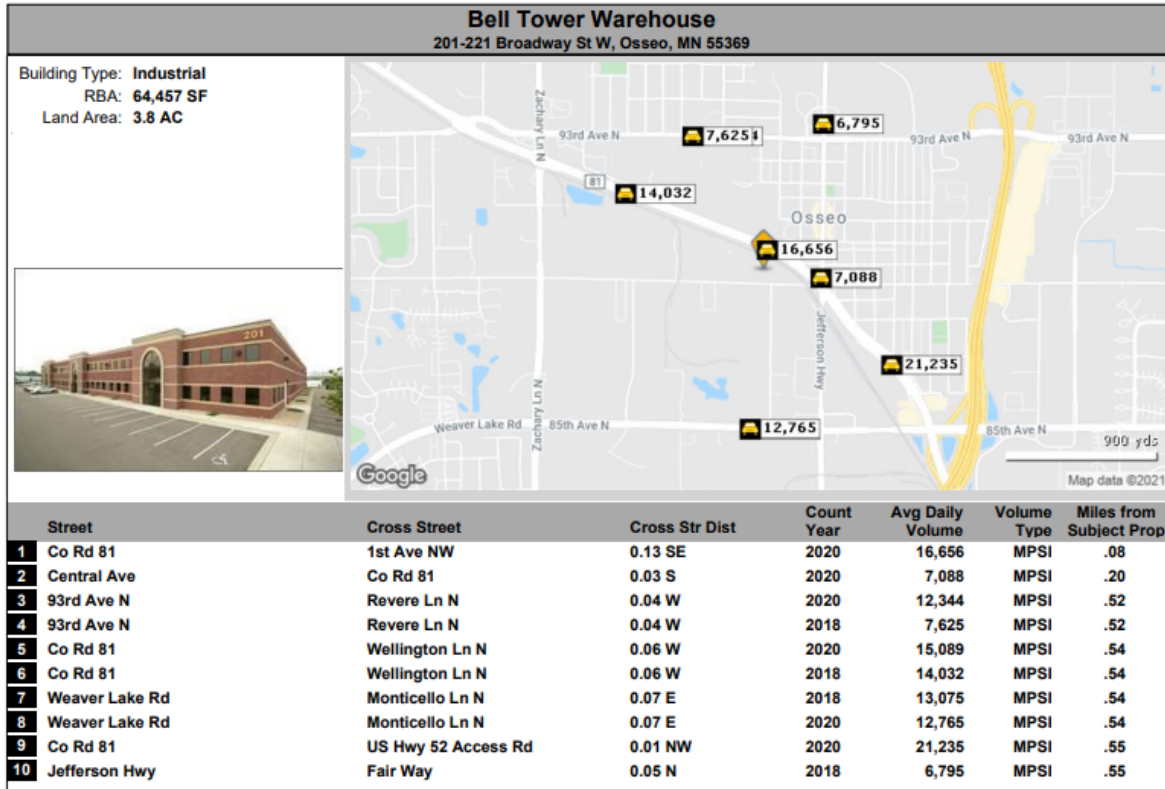




**DEMOGRAPHICS**

**FOR LEASE**  
10,688 - 64,457 SF

**Traffic Count Report**



Copyrighted report licensed to Arrow Real Estate Corporation - 282344.

2/26/2021

Page 1

**Contact**

Phone: 763.424.6355

Fax: 763.424.7980

**Arrow Companies**

7365 Kirkwood Court N. Suite 335

Maple Grove, MN 55369

[www.arrowcos.com](http://www.arrowcos.com)