



1216 Selby Ave  
St. Paul MN 55104

**FOR LEASE** - 3,000 SF Office Building



#### FEATURES:

- 3,000 SF office space FOR LEASE
- Space includes 7 private offices, conference room, 2 restrooms, small kitchen area and reception area
- Off street parking

Lease Rate

**\$3,300/month**

Includes: Taxes, CAM, Electric, HVAC



Overview .....	1
Aerial Maps .....	2
Floor Plans .....	3
	4-7
	8-9
	10
	11



**Chad Weeks**  
612.619.9911  
cweeks@arrowcos.com



**Jeff Penfield**  
612.325.2067  
jpenfield@arrowcos.com

#### Contact

Phone: 763.424.6355  
Fax: 763.424.7980

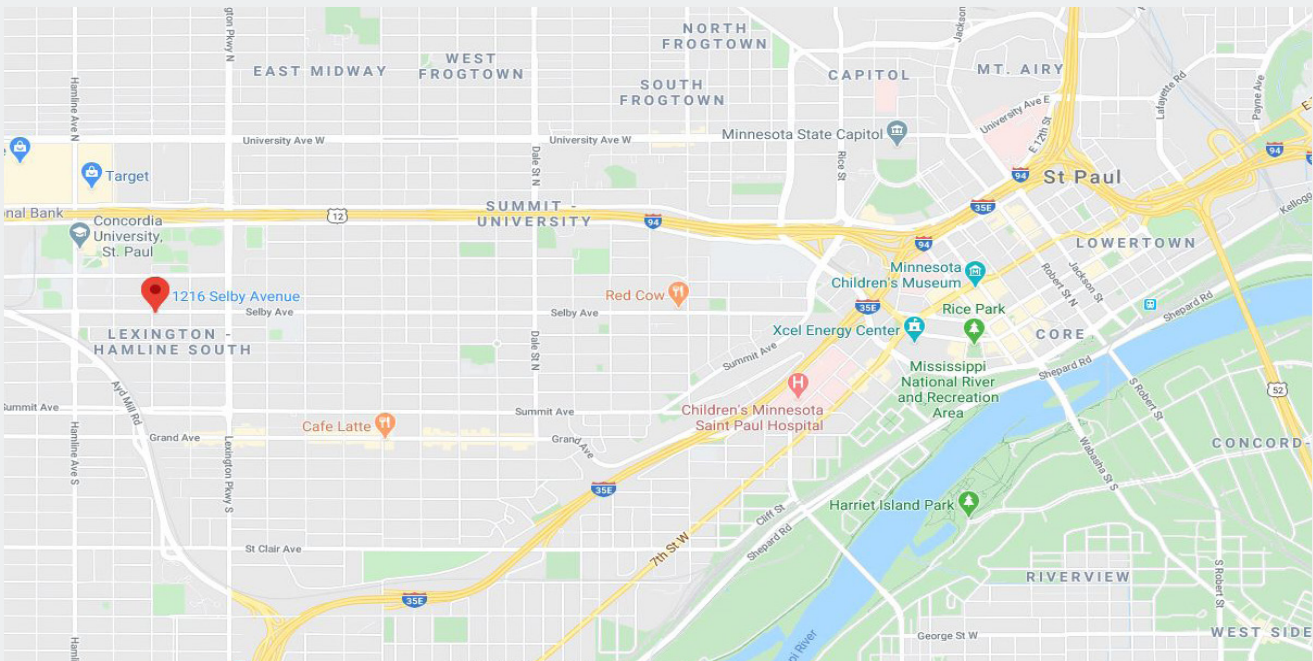
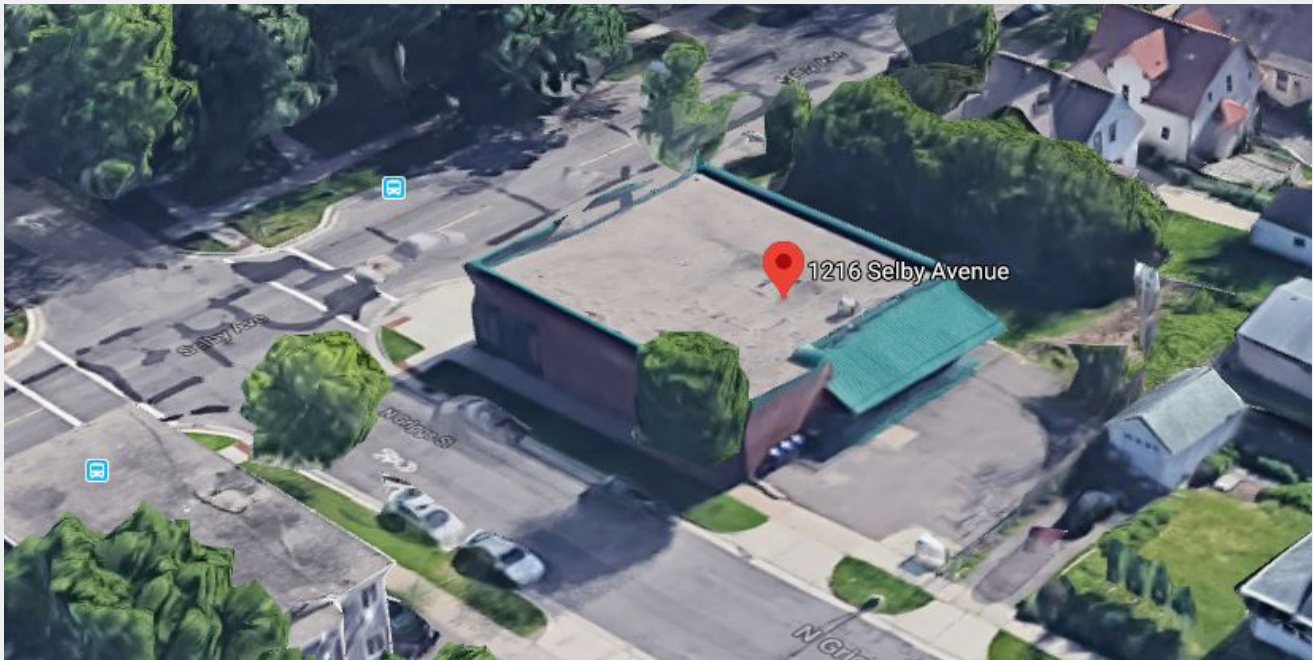
**Arrow Companies**  
7365 Kirkwood Court N. Suite 335  
Maple Grove, MN 55369

[www.arrowcos.com](http://www.arrowcos.com)



**AERIAL & MAP**

**FOR LEASE** - 3,000 SF Office Building



**Contact**

Phone: 763.424.6355  
Fax: 763.424.7980

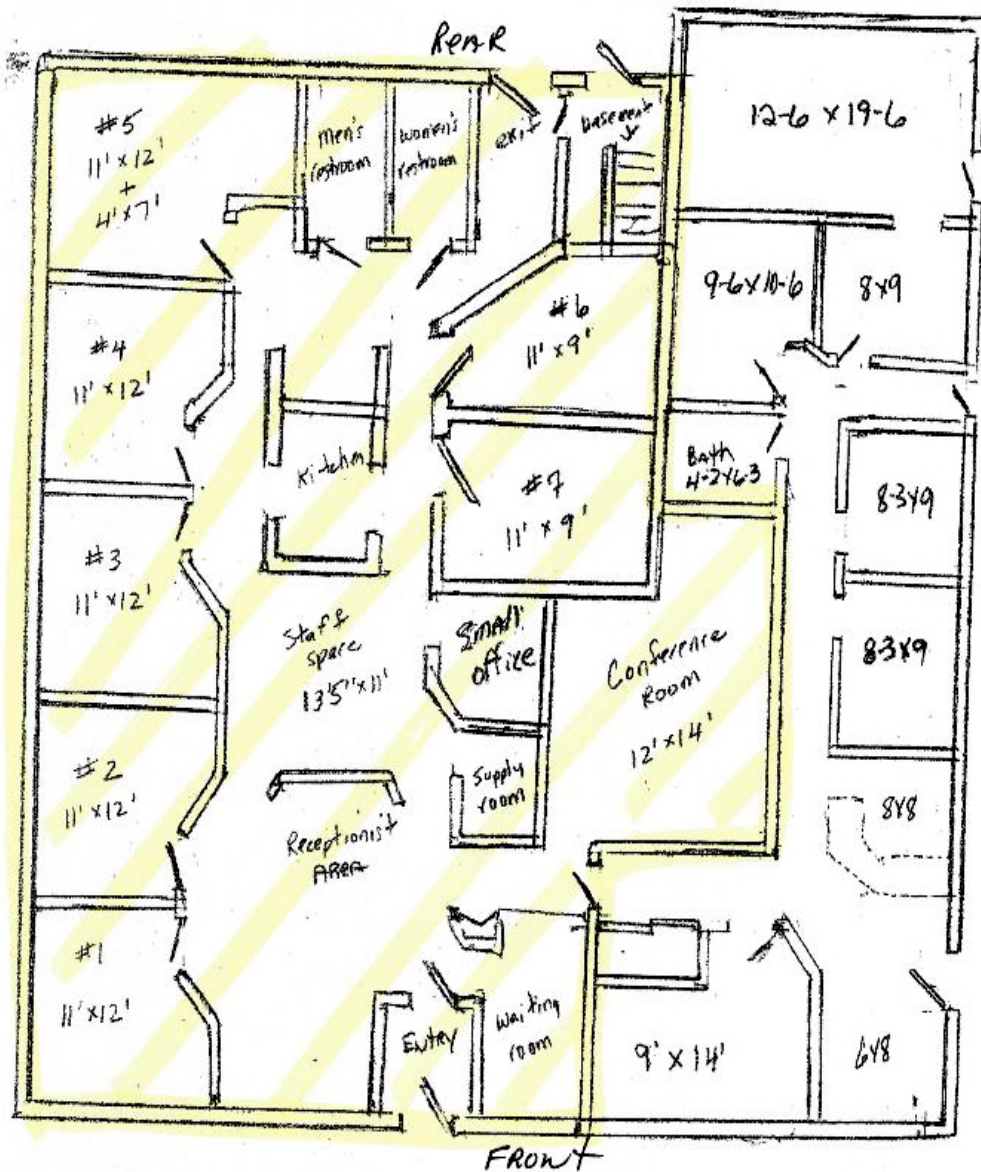
**Arrow Companies**

7365 Kirkwood Court N. Suite 335  
Maple Grove, MN 55369

[www.arrowcos.com](http://www.arrowcos.com)

**FLOOR PLAN**

**FOR LEASE** - 3,000 SF Office Building



**Contact**

Phone: 763.424.6355  
Fax: 763.424.7980

**Arrow Companies**

7365 Kirkwood Court N. Suite 335  
Maple Grove, MN 55369

[www.arrowcos.com](http://www.arrowcos.com)