



Industrial Building
14105 Azurite St. NW.
Ramsey, MN 55303

FOR SALE

11,208 SF Office / Warehouse Building



FEATURES:

- 11,208 SF Industrial Building "FOR SALE" in Ramsey, MN
- Warehouse designed with minimal columns.
- Includes 1,612 SF Office & 9,596 SF Warehouse
- Flexible loading - 1 Dock Door & 1 Drive-in Door.
- Convenient location off Bunker Lake Blvd & Sunfish Lake Blvd.

Sale Price:
\$925,000



FACTS:

- ▲ \$25,448.27 - 2019 Property Taxes
- ▲ PID #27-32-25-44-0006
- ▲ Built in 2009
- ▲ 16' Clear Height in Warehouse
- ▲ Heavy Power (800 amps/ 208 volt/ 3-phase)
- ▲ 16 Parking Stalls
- ▲ Lot size - 0.97 acres

Overview	1
Aerial Maps	2
Property Facts	3
Floor Plans / Site Plan.	4-5
Photo Gallery	6



Chad Weeks
612.619.9911
cweeks@arrowcos.com



Steve Fischer
612.619.9991
sfischer@arrowcos.com

Contact

Phone: 763.424.6355
Fax: 763.424.7980

Arrow Companies
7365 Kirkwood Court N. Suite 335
Maple Grove, MN 55369

www.arrowcos.com

AERIAL & MAP

FOR SALE
11,208 SF Office / Warehouse Building



Contact

Phone: 763.424.6355
Fax: 763.424.7980

Arrow Companies

7365 Kirkwood Court N. Suite 335
Maple Grove, MN 55369

www.arrowcos.com



Industrial Building
14105 Azurite St. NW.
Ramsey, MN 55303

PROPERTY FACTS

FOR SALE

11,208 SF Office / Warehouse Building

BUILDING SIZE	9,596 SF (Warehouse) <u>1,612 SF (Office)</u> 11,208 SF Total
YEAR BUILT	2009
LAND ACRES	0.97 Acres
PID #	27-32-25-44-0006 (Anoka County)
ZONING	Industrial
CONSTRUCTION	Masonry
BUILDING HEIGHT	16' clear height (Warehouse Area)
PARKING	16 free surface spaces
DRIVE IN / DOCKS	(1) 8' x 10' Dock Door & (1) 12' x 14 Drive In Door
2019 REAL ESTATE TAXES	\$25,448.27
OFFICES	(4) Offices, Reception Desk, Break Room, Storage Room, Men's & Women's Restroom & Warehouse Men's & Women's Restroom.
WAREHOUSE	Open Warehouse Area (minimal columns)
ELECTRICAL	208 volt / 800 amp / 3 phase

Contact

Phone: 763.424.6355
Fax: 763.424.7980

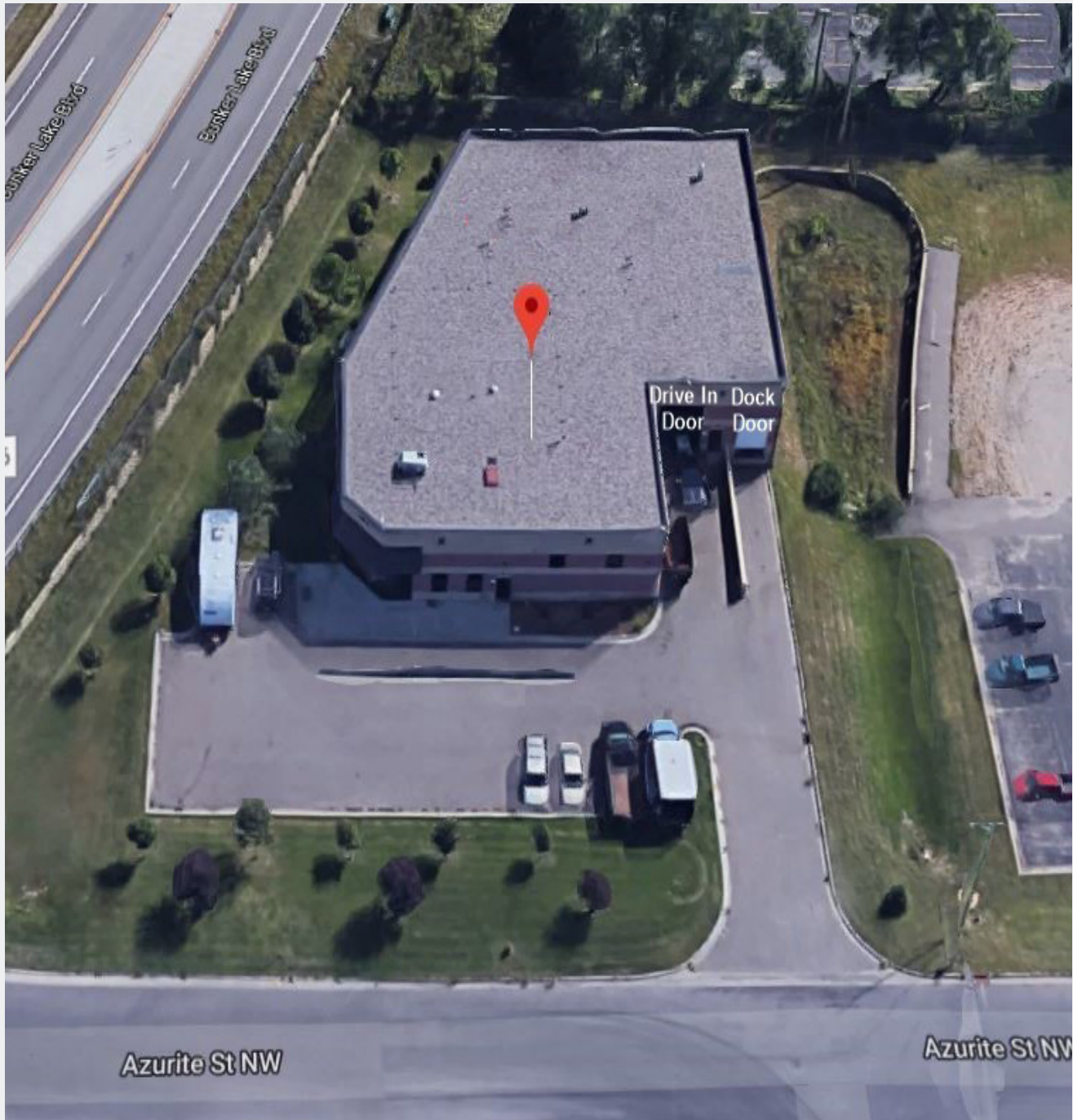
Arrow Companies

7365 Kirkwood Court N. Suite 335
Maple Grove, MN 55369

www.arrowcos.com

SITE PLAN

FOR SALE
11,208 SF Office / Warehouse Building



Contact

Phone: 763.424.6355
Fax: 763.424.7980

Arrow Companies

7365 Kirkwood Court N. Suite 335
Maple Grove, MN 55369

www.arrowcos.com

FLOOR PLAN

FOR SALE
11,208 SF Office / Warehouse Building



Contact

Phone: 763.424.6355
Fax: 763.424.7980

Arrow Companies

7365 Kirkwood Court N. Suite 335
Maple Grove, MN 55369

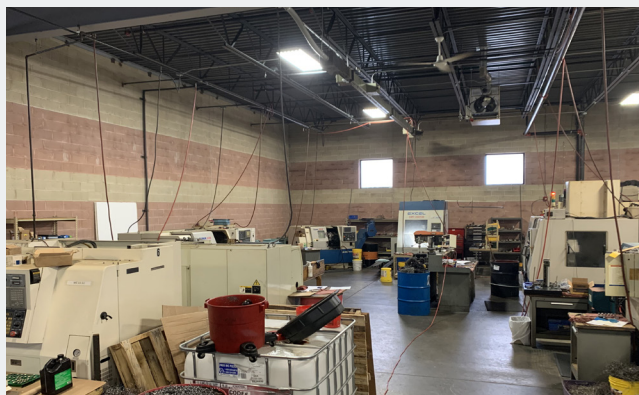
www.arrowcos.com



Front Entry View



Office



Warehouse View



Warehouse View



Outside View



Front View

Contact

Phone: 763.424.6355
Fax: 763.424.7980

Arrow Companies

7365 Kirkwood Court N. Suite 335
Maple Grove, MN 55369

www.arrowcos.com