



## Office/Warehouse Building

5340 Quam Ave NE  
St. Michael, MN 55376

**FOR SALE** - 5,950 SF Building



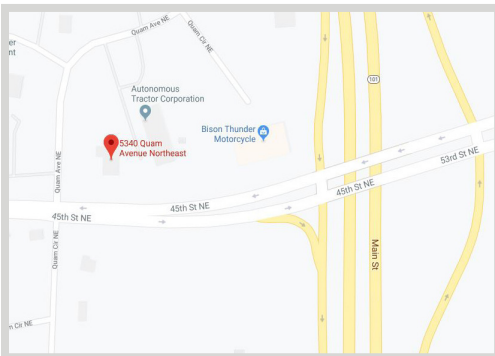
### FEATURES:

- 5,950 SF (750 SF Office & 5,200 SF Warehouse) Building - FOR SALE
- Located just off Hwy 101 at the corner of Cty Rd 36 & Quam Ave
- Unique single tenant building
- Easy access to I-94
- (3) Drive In Doors

Sale Price

**\$360,000**

Property Taxes - \$12,600.00 (2019)



### FACTS:

- ▲ PID #114126003060
- ▲ 1.6 acres
- ▲ Zoned B-1 General Business
- ▲ 240 Volt - 300 amp power
- ▲ Tenant Occupied
  - Lease until 9/30/2020
  - Tenant pays \$3,247/month
  - Tenant pays all utilities and maintenance
  - Landlord pays property tax and insurance

Overview .....	1
Aerial Maps .....	2
Floor Plans .....	3
Photo Gallery .....	4



**Steve Fischer**  
612.619.9991  
sfischer@arrowcos.com



**Chad Weeks**  
612.619.9911  
cweeks@arrowcos.com

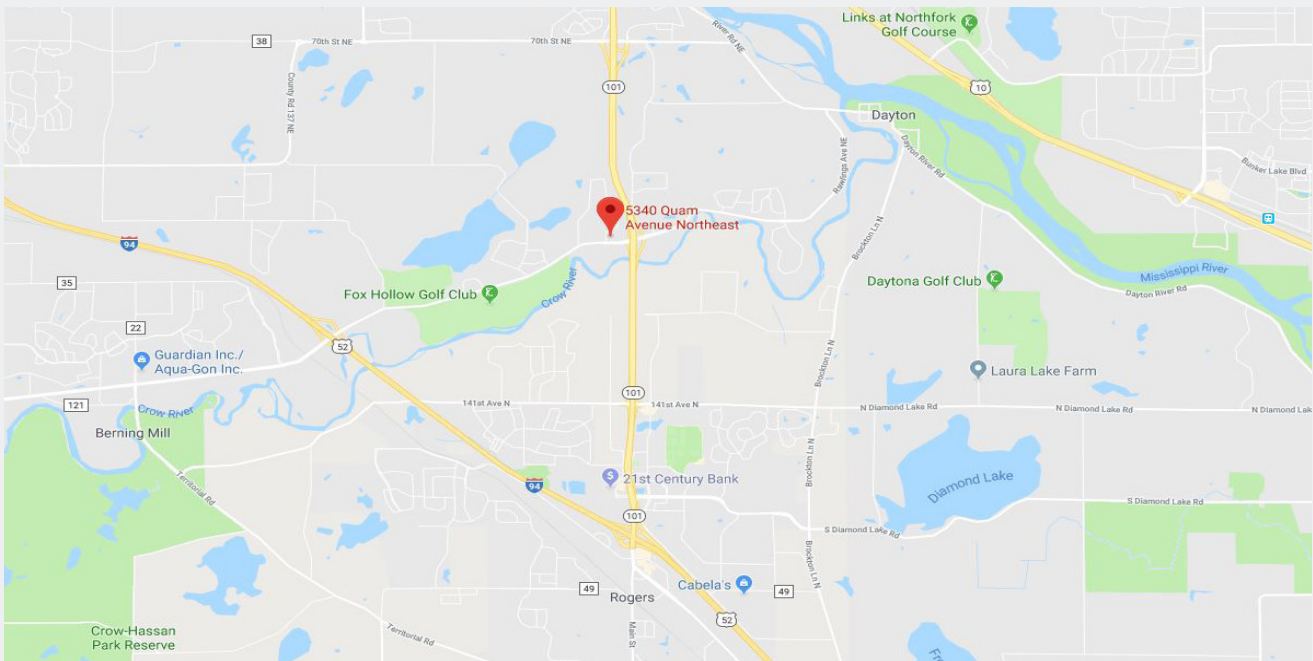
### Contact

Phone: 763.424.6355  
Fax: 763.424.7980

**Arrow Companies**  
7365 Kirkwood Court N. Suite 335  
Maple Grove, MN 55369

[www.arrowcos.com](http://www.arrowcos.com)





**Contact**

Phone: 763.424.6355  
Fax: 763.424.7980

**Arrow Companies**

7365 Kirkwood Court N. Suite 335  
Maple Grove, MN 55369

[www.arrowcos.com](http://www.arrowcos.com)

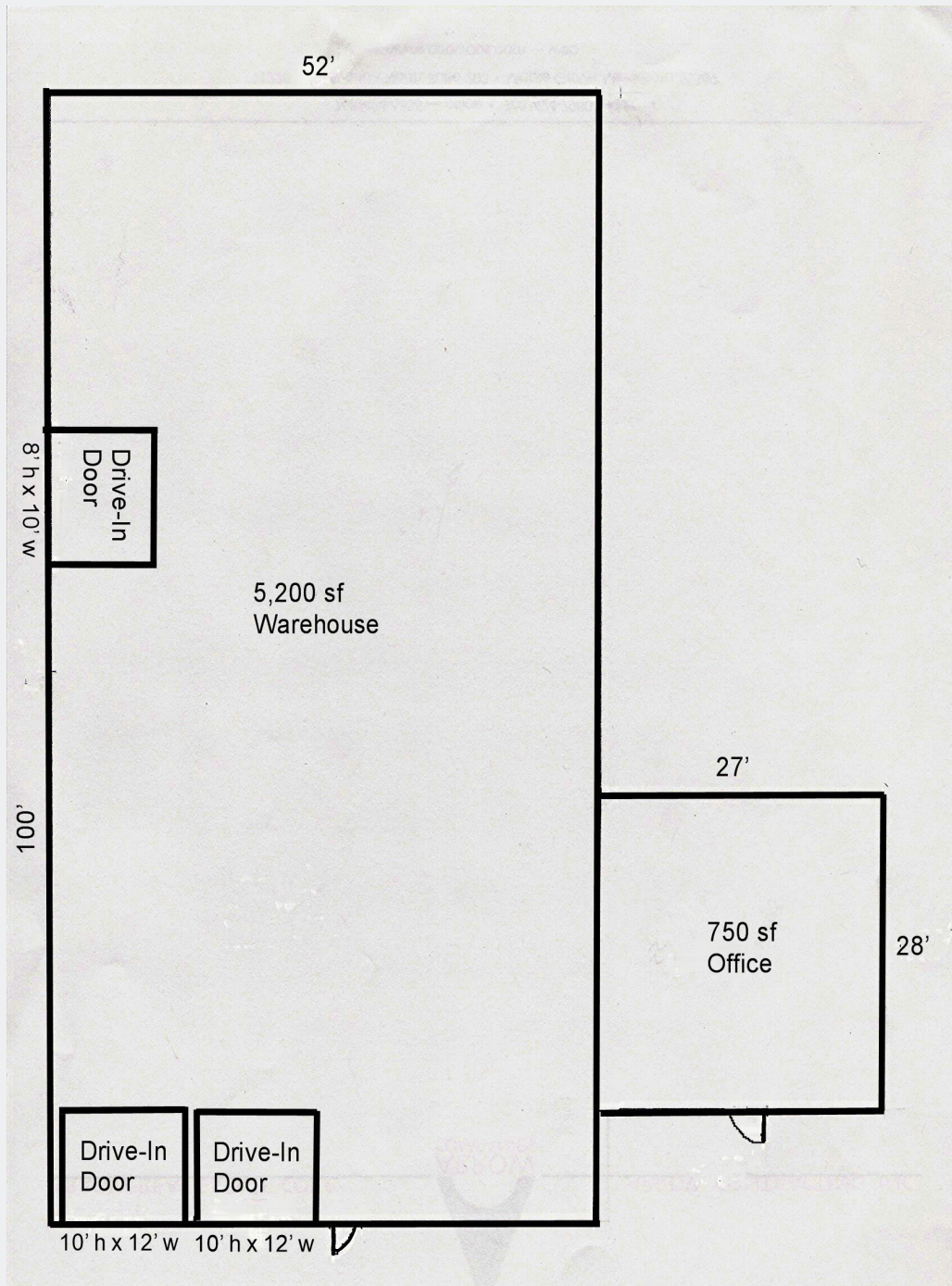


## Office/Warehouse Building

5340 Quam Ave NE  
St. Michael, MN 55376

### FLOOR PLAN

**FOR SALE** - 5,950 SF Building



#### Contact

Phone: 763.424.6355  
Fax: 763.424.7980

#### Arrow Companies

7365 Kirkwood Court N. Suite 335  
Maple Grove, MN 55369

[www.arrowcos.com](http://www.arrowcos.com)



## OUTSIDE GALLERY

**FOR SALE** - 5,950 SF Building



### Contact

Phone: 763.424.6355  
Fax: 763.424.7980

### Arrow Companies

7365 Kirkwood Court N. Suite 335  
Maple Grove, MN 55369

[www.arrowcos.com](http://www.arrowcos.com)