



Waterfront West Professional Building

9075 Quaday Ave.

Otsego, MN 55330

FOR LEASE

1,876 SF - 3,750 SF Office Available



FEATURES:

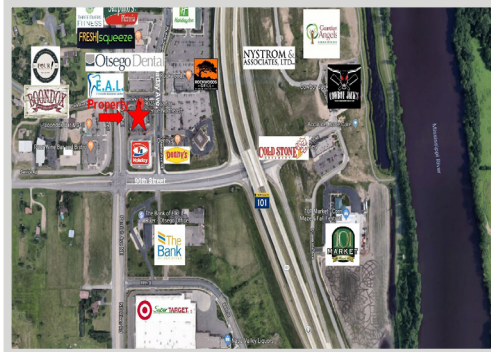
- Class A professional office / medical building in growing Otsego area.
- Perfect for any doctor, dental or other medical use.
- High visibility with easy access to Hwy. 101 & 169.
- Built out as medical office but can be remodeled to fit any use.
- Great location near other retail & medical businesses!

Lease Rate

\$12.00 / psf NNN

\$3.00 / psf (Tax)

\$5.93 / psf (Cam)



Overview	1
Aerial Maps	2
Site Plan	3
Floor Plans	4



Chad Weeks

612.619.9911

cweeks@arrowcos.com



Jeff Penfield

612.325.2067

jpenfield@arrowcos.com

Contact

Phone: 763.424.6355

Fax: 763.424.7980

Arrow Companies

7365 Kirkwood Court N. Suite 335

Maple Grove, MN 55369

www.arrowcos.com



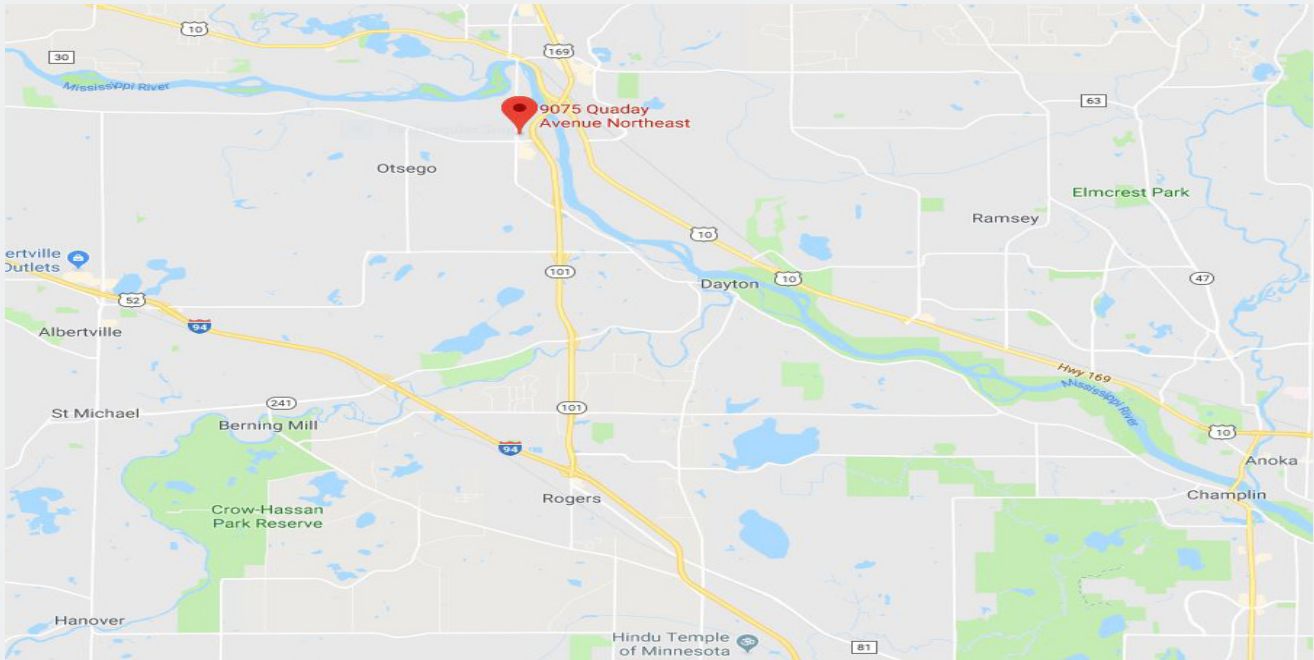
Waterfront West Professional Building

9075 Quaday Ave.

Otsego, MN 55330

AERIAL & MAP

FOR LEASE
1,876 SF - 3,750 SF Office Available



Contact

Phone: 763.424.6355

Fax: 763.424.7980

Arrow Companies

7365 Kirkwood Court N. Suite 335

Maple Grove, MN 55369

www.arrowcos.com



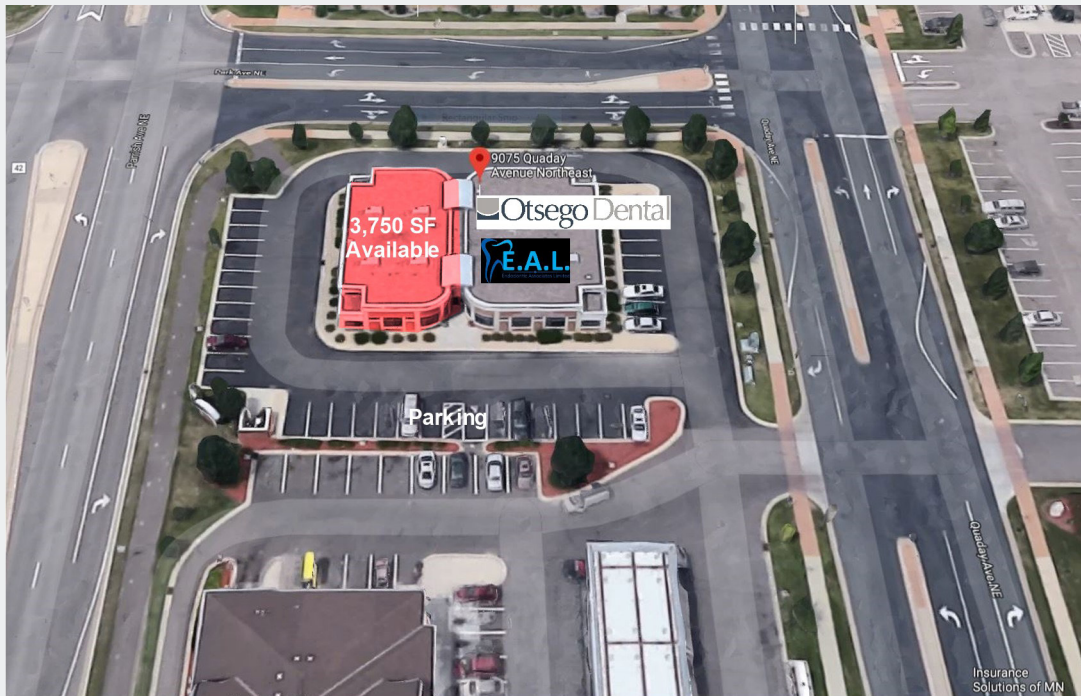
Waterfront West Professional Building

9075 Quaday Ave.

Otsego, MN 55330

SITE PLAN

FOR LEASE
1,876 SF - 3,750 SF Office Available



Contact

Phone: 763.424.6355

Fax: 763.424.7980

Arrow Companies

7365 Kirkwood Court N. Suite 335

Maple Grove, MN 55369

www.arrowcos.com



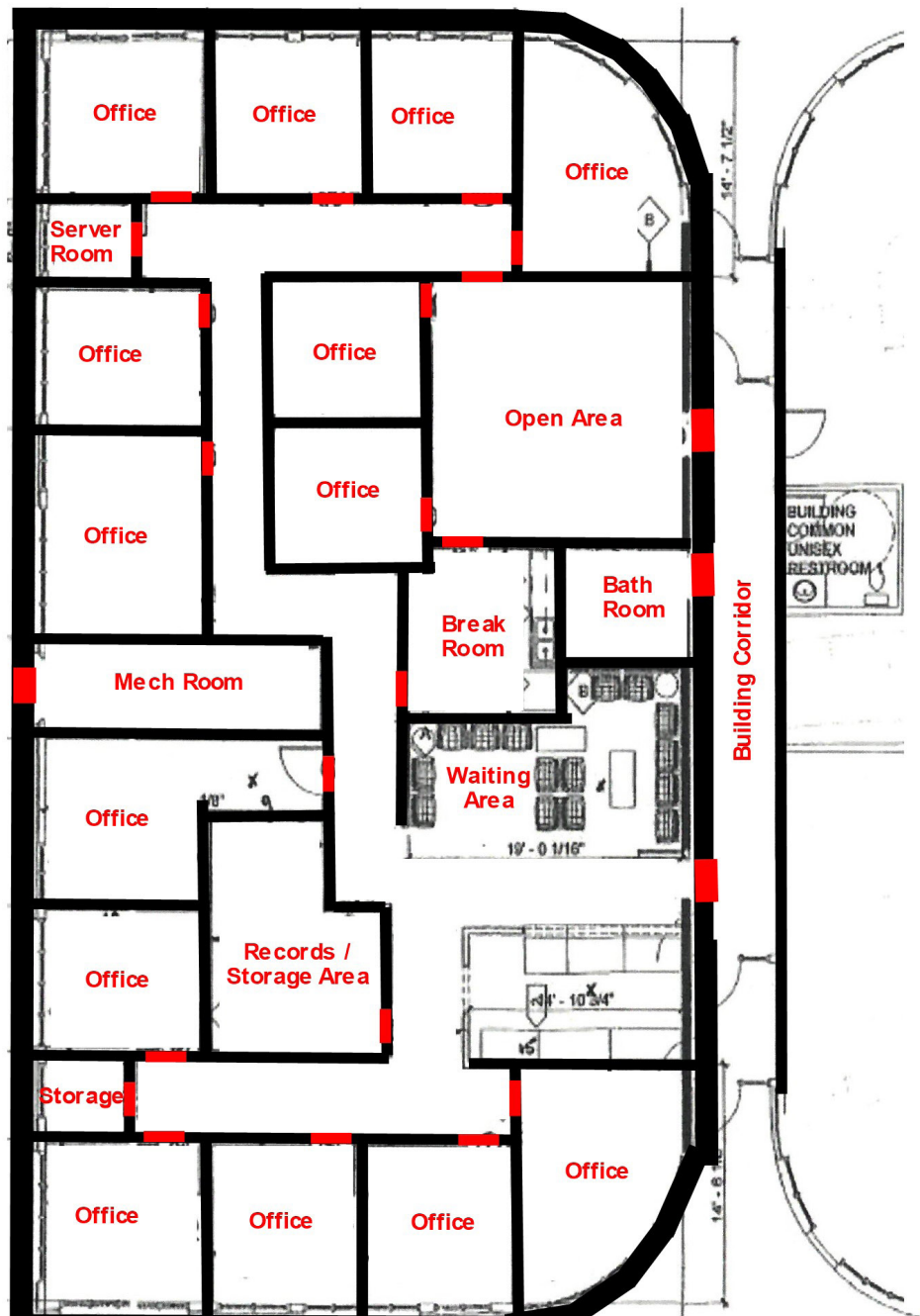
Waterfront West Professional Building

9075 Quaday Ave.

Otsego, MN 55330

FLOOR PLAN

FOR LEASE
1,876 SF - 3,750 SF Office Available



Contact

Phone: 763.424.6355

Fax: 763.424.7980

Arrow Companies

7365 Kirkwood Court N. Suite 335

Maple Grove, MN 55369

www.arrowcos.com