



## Office / Warehouse Building

22027 Industrial Blvd.

Rogers, MN 55374

**FOR LEASE**  
**4,200 SF Industrial Space**



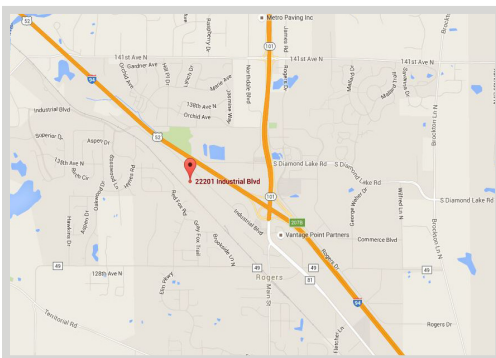
### FEATURES:

- 4,200 SF office / warehouse available - For Lease in Rogers, MN.
- Great opportunity for any small company with dock & drive in requirements.
- Convenient location on Industrial Blvd with easy access to I-94
- Heavy Power Available with 16' clear height.

### Lease Rate

**Office- \$8.00 /psf**  
**Whse- \$4.50 /psf**

Cam: \$2.11/psf & Tax: \$1.13/psf



### Suite Option

▲ 4,200 SF (1,200 SF Office / 3,000 SF Warehouse) 1 dock.

Overview .....	1
Aerial Maps .....	2
Floor Plan .....	3
Photo Gallery .....	4



**Chad Weeks**

612.619.9911

cweeks@arrowcos.com



**Steve Fischer**

612.619.9991

sfischer@arrowcos.com

### Contact

Phone: 763.424.6355

Fax: 763.424.7980

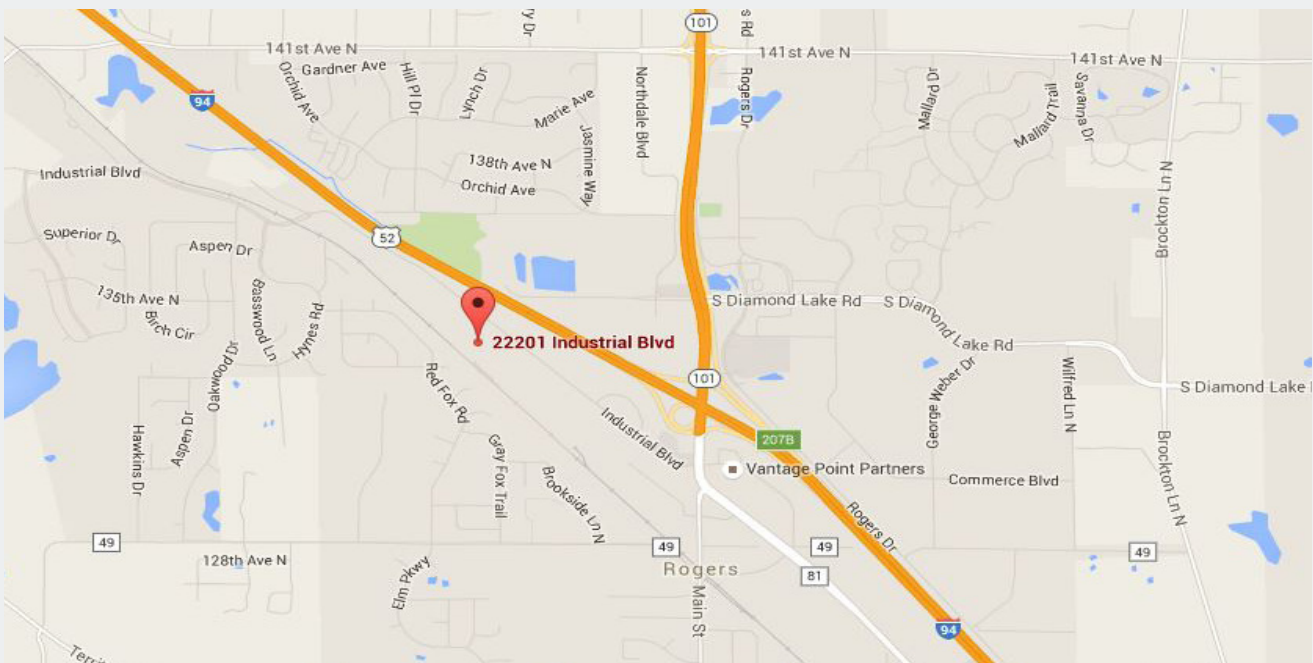
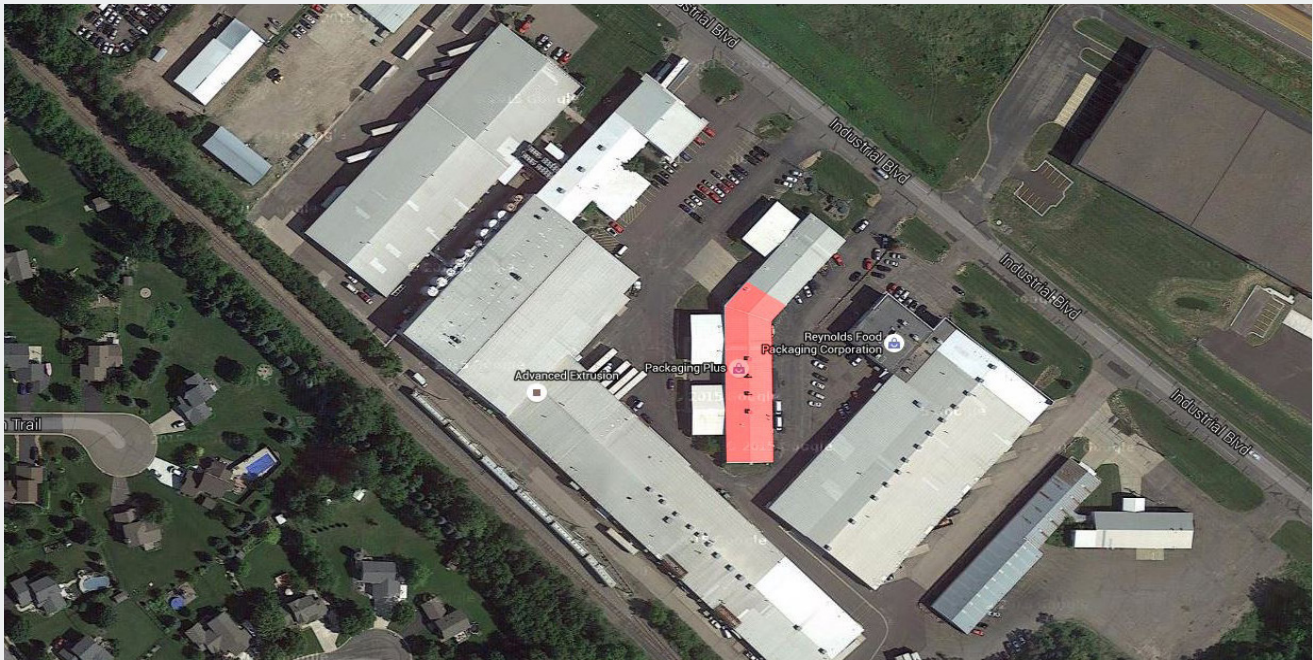
### Arrow Companies

7365 Kirkwood Court N. Suite 335  
Maple Grove, MN 55369

[www.arrowcos.com](http://www.arrowcos.com)

**AERIAL & MAP**

**FOR LEASE**  
**4,200 SF Industrial Space**



**Contact**

Phone: 763.424.6355

Fax: 763.424.7980

**Arrow Companies**

7365 Kirkwood Court N. Suite 335

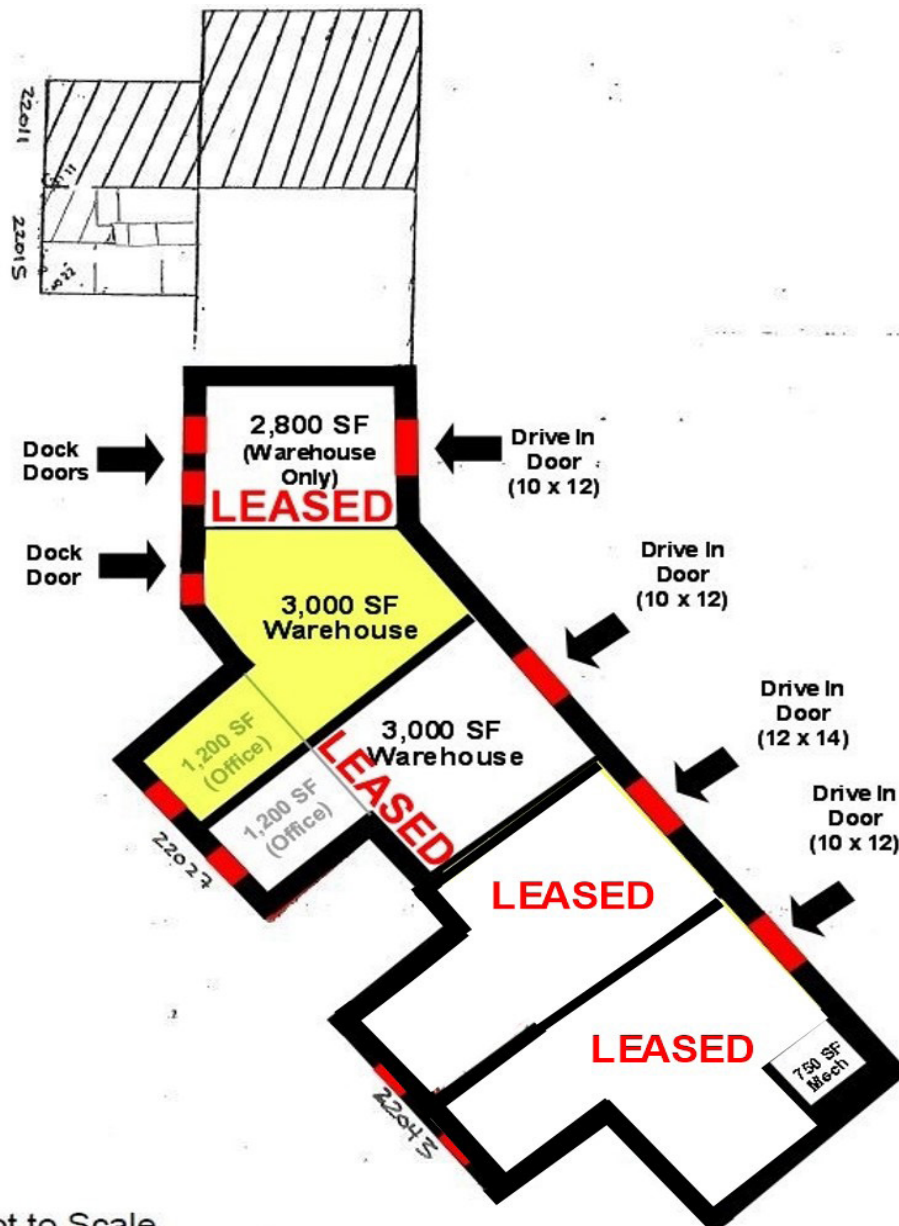
Maple Grove, MN 55369

[www.arrowcos.com](http://www.arrowcos.com)



**FLOOR PLAN**

**FOR LEASE**  
4,200 SF Industrial Space



Not to Scale

**Contact**

Phone: 763.424.6355

Fax: 763.424.7980

**Arrow Companies**

7365 Kirkwood Court N. Suite 335

Maple Grove, MN 55369

[www.arrowcos.com](http://www.arrowcos.com)

## PHOTO GALLERY

**FOR LEASE**  
4,200 SF Industrial Space



Outside View



Side View



Warehouse View



Warehouse View



Warehouse View



Office

### Contact

Phone: 763.424.6355

Fax: 763.424.7980

### Arrow Companies

7365 Kirkwood Court N. Suite 335

Maple Grove, MN 55369

[www.arrowcos.com](http://www.arrowcos.com)