



## Elk River Industrial Condos

11044 Industrial Circle NE

Elk River, MN 55330

**FOR LEASE** - 2,172 SF of Office Space



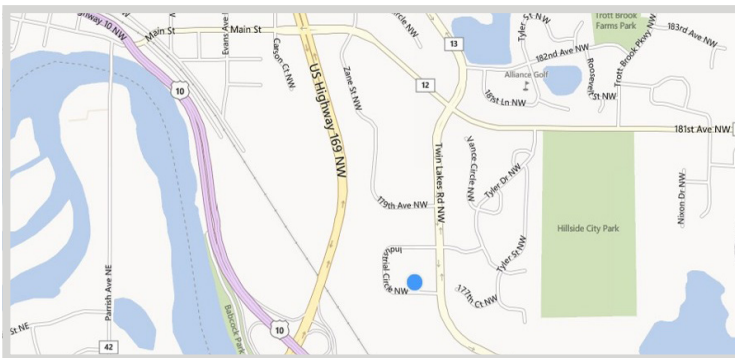
### FEATURES:

- 2,172 square feet of office space available June 1, 2019
- Office space includes private restrooms, 5 offices, large conference room, open work area, breakroom, and reception area
- Decorative suite entrances with shared vestibule

Lease Rate

**\$9.50/psf NNN**

2019: Tax- \$2.21 Cam- \$1.18



Overview .....	1
Aerial Maps .....	2
Site Plan .....	3
Floor Plan .....	4
Photo Gallery .....	5



**Chad Weeks**

612.619.9911

cweeks@arrowcos.com



**Steve Fischer**

612.619.9991

sfischer@arrowcos.com

### Contact

Phone: 763.424.6355

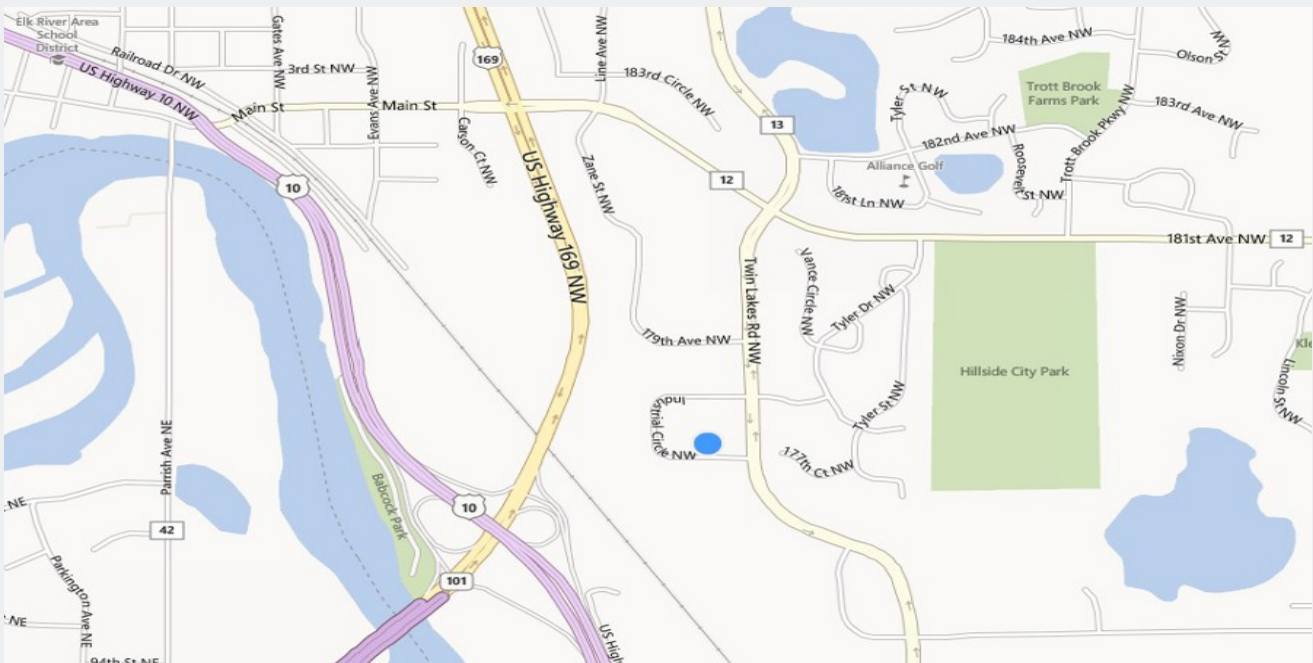
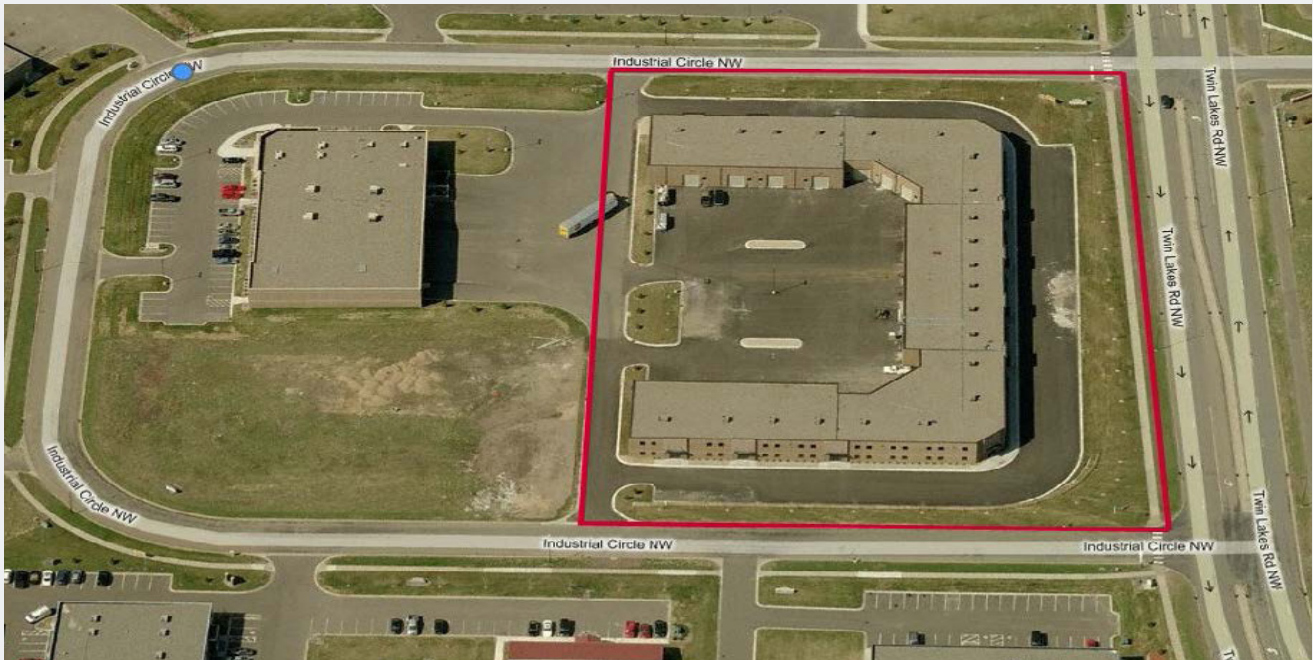
Fax: 763.424.7980

### Arrow Companies

7365 Kirkwood Court N. Suite 335

Maple Grove, MN 55369

[www.arrowcos.com](http://www.arrowcos.com)



**Contact**

Phone: 763.424.6355

Fax: 763.424.7980

**Arrow Companies**

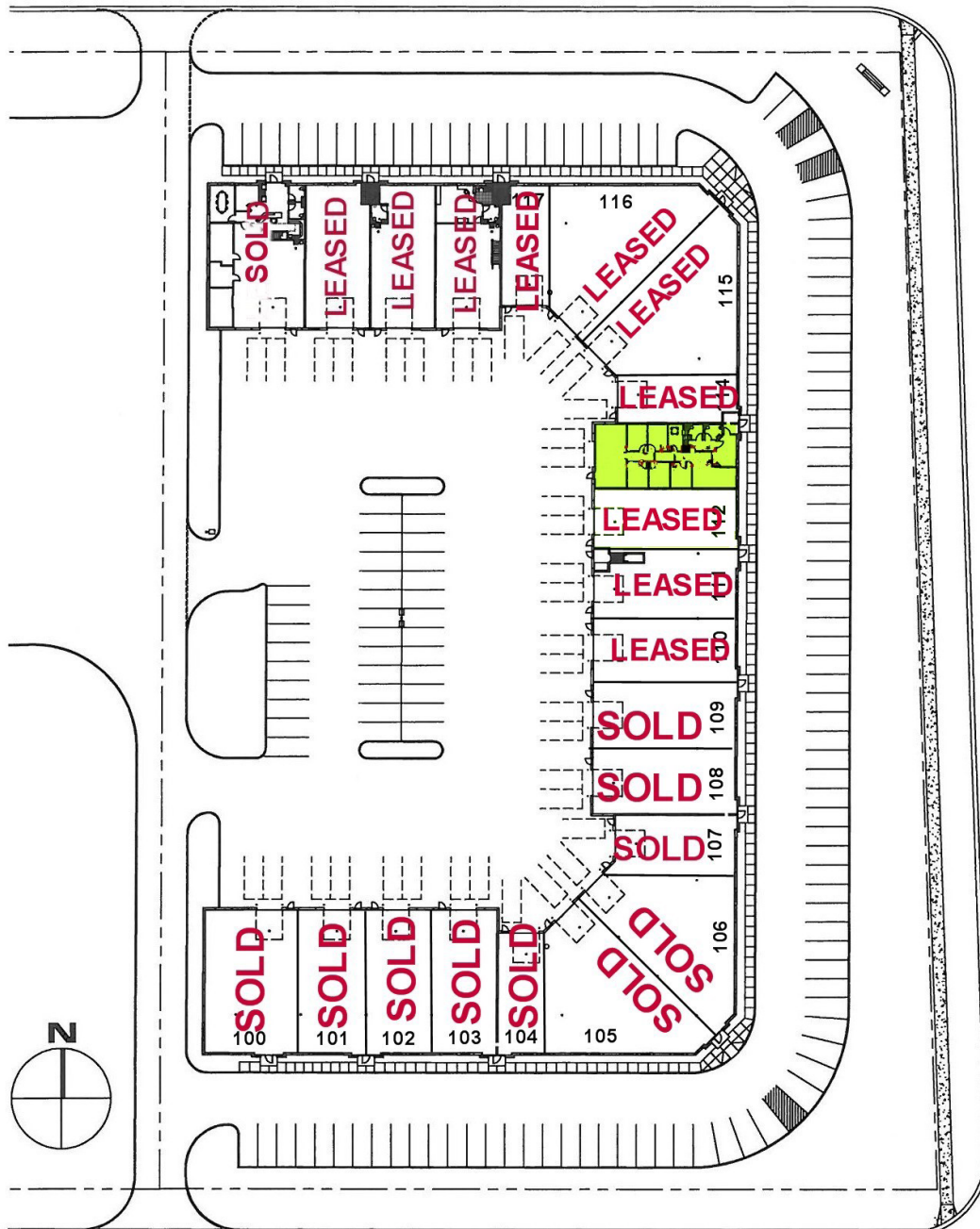
7365 Kirkwood Court N. Suite 335

Maple Grove, MN 55369



**SITE PLAN**

**FOR LEASE** - 2,172 SF of Office Space



**Contact**

Phone: 763.424.6355

Fax: 763.424.7980

**Arrow Companies**

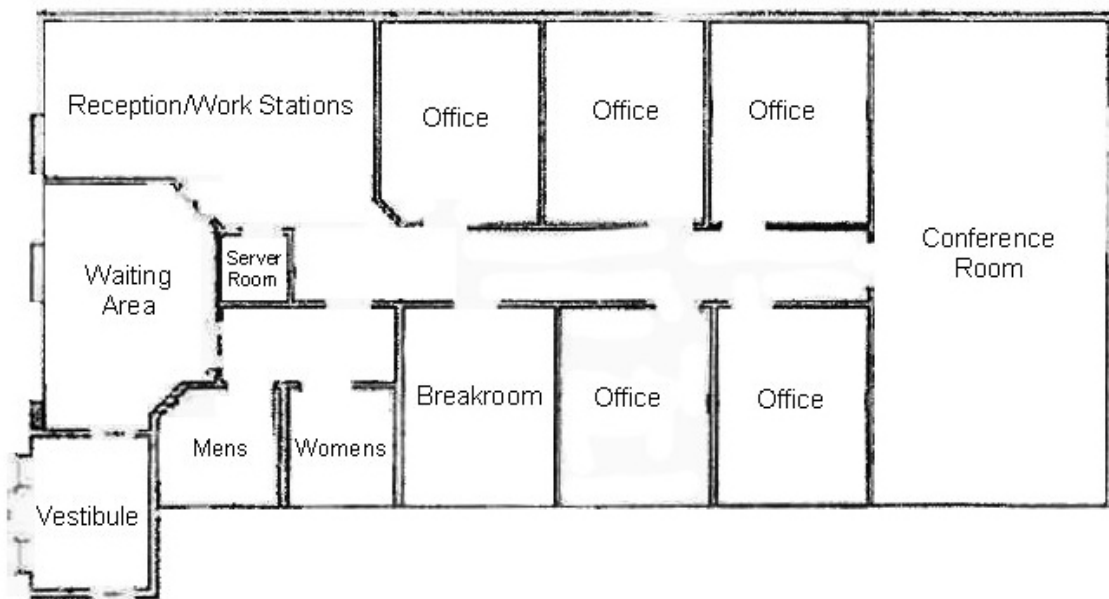
7365 Kirkwood Court N. Suite 335

Maple Grove, MN 55369

[www.arrowcos.com](http://www.arrowcos.com)

**FLOOR PLAN**

**FOR LEASE** - 2,172 SF of Office Space



**Contact**

Phone: 763.424.6355

Fax: 763.424.7980

**Arrow Companies**

7365 Kirkwood Court N. Suite 335

Maple Grove, MN 55369

[www.arrowcos.com](http://www.arrowcos.com)



## Elk River Industrial Condos

11044 Industrial Circle NE

Elk River, MN 55330

**OUTSIDE GALLERY**

**FOR LEASE** - 2,172 SF of Office Space



Back Dock Loading Area



**Contact**

Phone: 763.424.6355

Fax: 763.424.7980

**Arrow Companies**

7365 Kirkwood Court N. Suite 335

Maple Grove, MN 55369

[www.arrowcos.com](http://www.arrowcos.com)