



St. Paul Retail Property

235 Cleveland Ave S

St. Paul, MN 55105

FOR SALE - 2,879 SF Retail Building



FEATURES:

- 2,879 SF Retail Building 'FOR SALE' in St. Paul
- Great location at the high traffic intersection of Cleveland Ave & St Clair Ave
- Close proximity to University of St. Thomas, Macalester College and St. Catherine University
- Rare opportunity for an owner user or an investor!

Sale Price

\$489,000

Property Taxes - \$15,460 (2018)



Overview	1
Aerial Maps	2
Property Facts	3
Photo Gallery	4



Trevor Morlock

763.913.2734

tmorlock@arrowcos.com



Chad Weeks

612.619.9911

cweeks@arrowcos.com

Contact

Phone: 763.424.6355

Fax: 763.424.7980

Arrow Companies

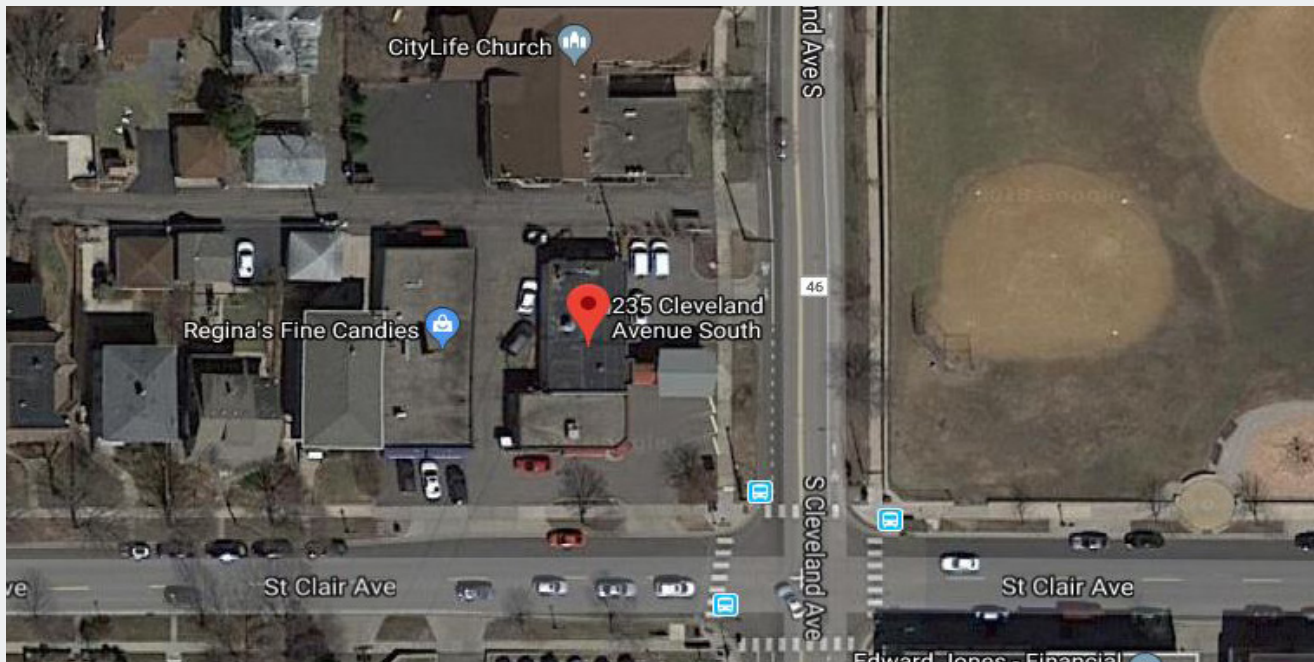
7365 Kirkwood Court N. Suite 335

Maple Grove, MN 55369

www.arrowcos.com

AERIAL & MAP

FOR SALE - 2,879 SF Retail Building



Contact

Phone: 763.424.6355

Fax: 763.424.7980

Arrow Companies

7365 Kirkwood Court N. Suite 335

Maple Grove, MN 55369

www.arrowcos.com



St. Paul Retail Property

235 Cleveland Ave S

St. Paul, MN 55105

PROPERTY FACTS

FOR SALE - 2,879 SF Retail Building

BUILDING SIZE	2,879 SF
YEAR BUILT	1925
LOT SIZE	0.28 Acres
PID #	052823440103
ZONING	B2
2018 REAL ESTATE TAXES	\$15,460

Contact

Phone: 763.424.6355

Fax: 763.424.7980

Arrow Companies

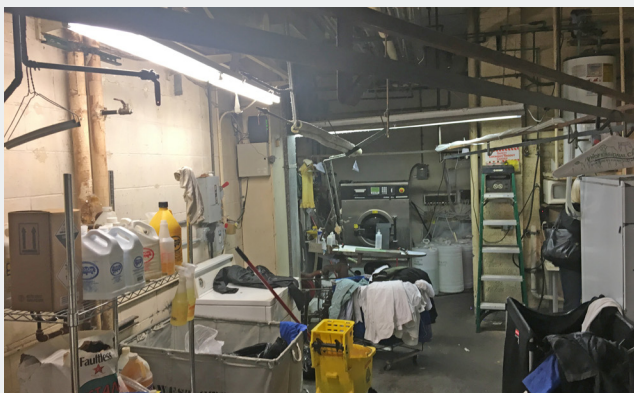
7365 Kirkwood Court N. Suite 335

Maple Grove, MN 55369

www.arrowcos.com

PHOTO GALLERY

FOR SALE - 2,879 SF Retail Building



Contact

Phone: 763.424.6355

Fax: 763.424.7980

Arrow Companies

7365 Kirkwood Court N. Suite 335

Maple Grove, MN 55369

www.arrowcos.com