



Office / Warehouse
8878 N. Zealand Ave. N.
Brooklyn Park, MN 55445

FOR SALE
4,680 SF Office / Warehouse Space



FEATURES & FACTS:

- 4,680 SF Office / Warehouse in Brooklyn Park, MN.
- Includes 496 SF Office / Reception Area & 4,184 SF Warehouse.
- Warehouse area is 16' clear height with 2 Drive In doors.
- Outside storage is secured and includes 19 parking stalls.
- Great for any small business user!

Sales Price:

\$500,000

(2018 Property Taxes - \$9,944.52)



Overview	1
Aerial Maps	2
Property Facts	3
Floor Plan	4
Photo Gallery	5



Chad Weeks
612.619.9911
cweeks@arrowcos.com



Jeff Penfield
612.325.2067
jpenfield@arrowcos.com

Contact

Phone: 763.424.6355
Fax: 763.424.7980

Arrow Companies
7365 Kirkwood Court N. Suite 335
Maple Grove, MN 55369

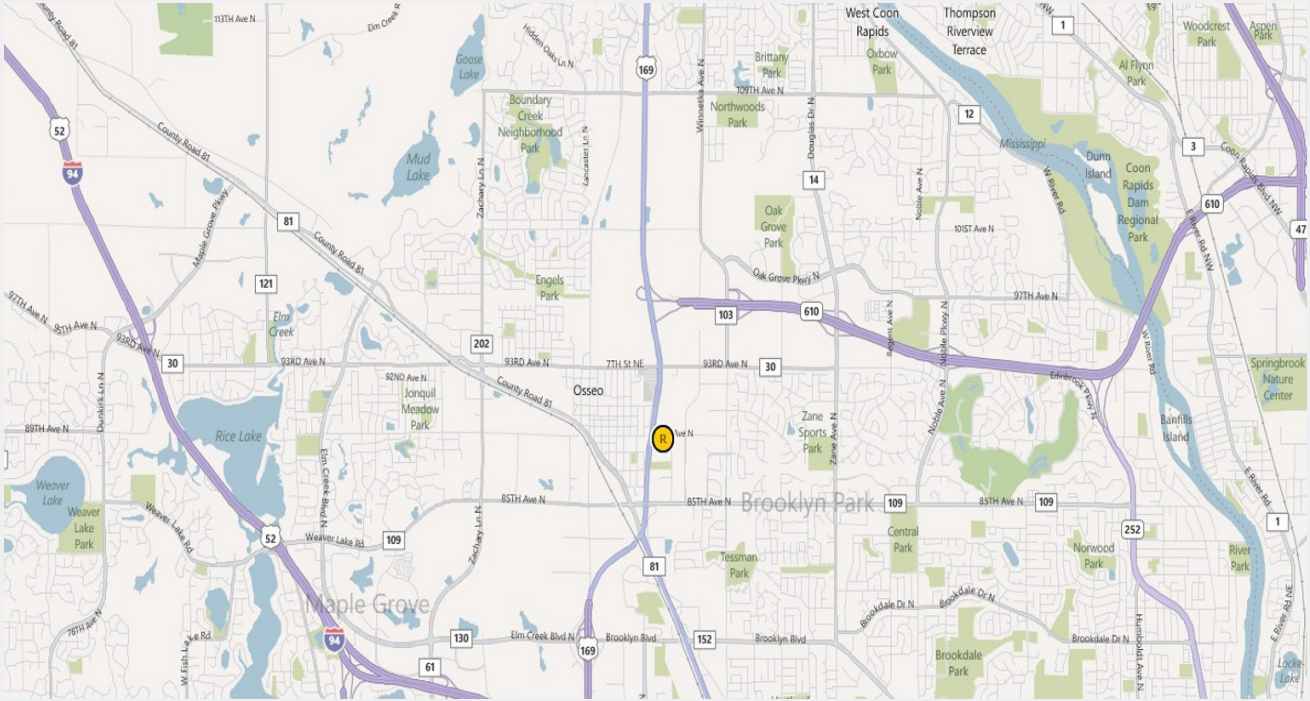
www.arrowcos.com



Office / Warehouse
8878 N. Zealand Ave. N.
Brooklyn Park, MN 55445

AERIAL & MAP

FOR SALE
4,680 SF Office / Warehouse Space



Contact
Phone: 763.424.6355
Fax: 763.424.7980

Arrow Companies
7365 Kirkwood Court N. Suite 335
Maple Grove, MN 55369

www.arrowcos.com



Office / Warehouse
8878 N. Zealand Ave. N.
Brooklyn Park, MN 55445

PROPERTY FACTS

FOR SALE
4,680 SF Office / Warehouse Space

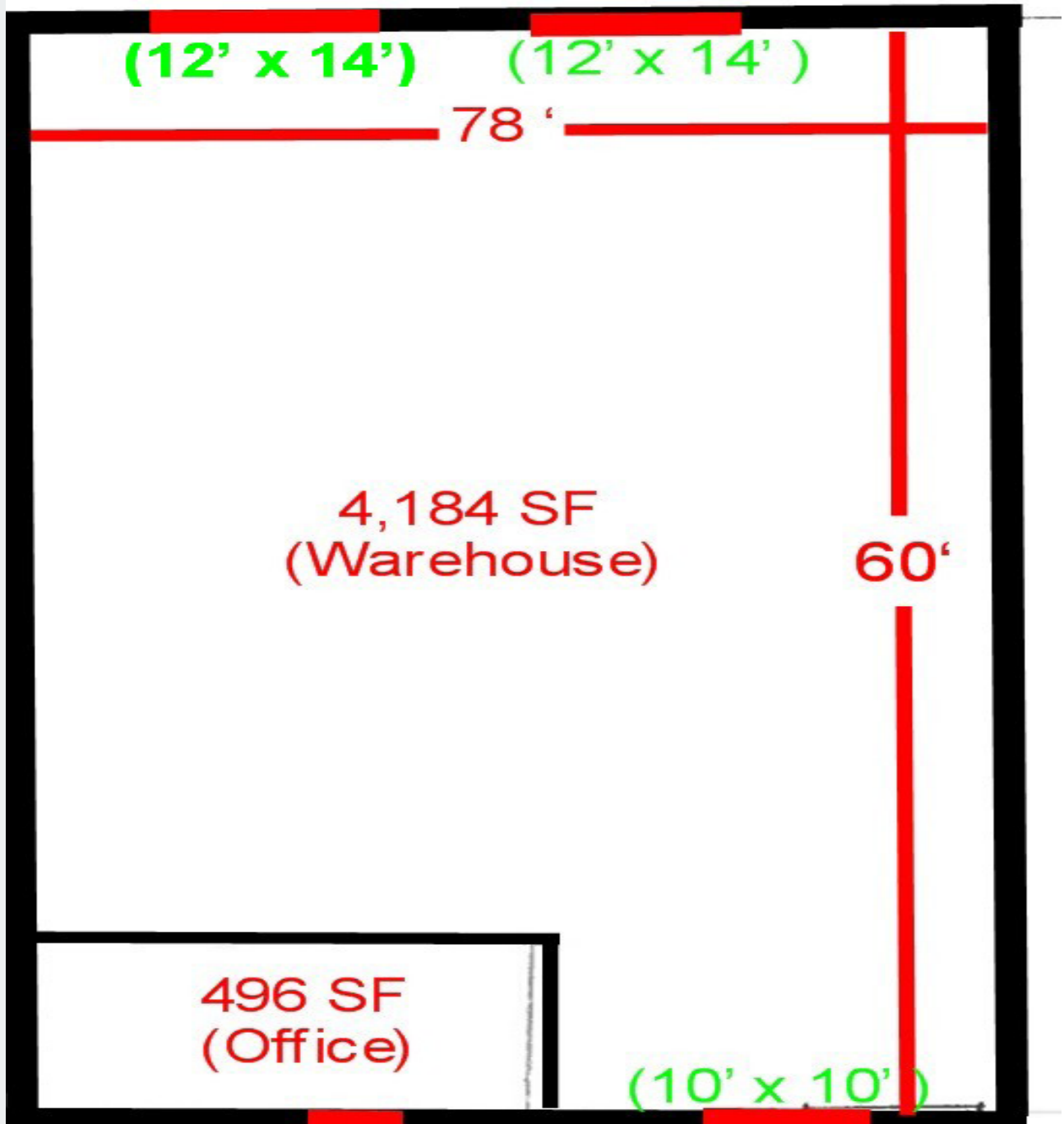
BUILDING SIZE	4,680 SF (496 SF Office / 4,184 SF Warehouse)
YEAR BUILT	1985
BUILDING TYPE	Concrete Block
2018 PROPERTY TAXES	\$9,944.52 (Hennepin County)
LOT SIZE	0.51 Acres (22,000 SF)
ZONING	I - 3 (Industrial Preferred)
CLEAR HEIGHT	16'
ROOF	Built up Roofing System
TYPE OF HEATING & COOLING	Office (Split System) / Warehouse (Infrared Heaters)
FIRE PROTECTION	Wet System
LOADING	(1) 10' wide x 10' high Drive in & (2) 12' x 14' Drive in Door Includes Drive Thru Bay.
UTILITIES	Electric - Excel Energy Gas - Centerpoint Energy City Sewer & Water
AMENITIES	Rear secured fenced area (80' x 80') with 19 parking stalls. Flammable waste trap. Security System. Explosion Proof Room. 496 sf mezzanine in shop with offices & shower.



Office / Warehouse
8878 N. Zealand Ave. N.
Brooklyn Park, MN 55445

FLOOR PLAN

FOR SALE
4,680 SF Office / Warehouse Space



Contact
Phone: 763.424.6355
Fax: 763.424.7980

Arrow Companies
7365 Kirkwood Court N. Suite 335
Maple Grove, MN 55369

www.arrowcos.com

PHOTO GALLERY

FOR SALE
4,680 SF Office / Warehouse Space



Front View



Warehouse View



Warehouse View



Warehouse View



Back Lot



Reception Desk

Contact

Phone: 763.424.6355
Fax: 763.424.7980

Arrow Companies

7365 Kirkwood Court N. Suite 335
Maple Grove, MN 55369

www.arrowcos.com