



## Lakeway Office Park

7032 East Fish Lake Rd.

Maple Grove, MN 55369

**FOR LEASE**  
**1,328 SF Office Condo**



### FEATURES:

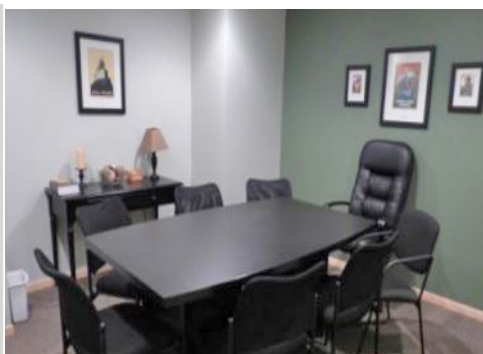
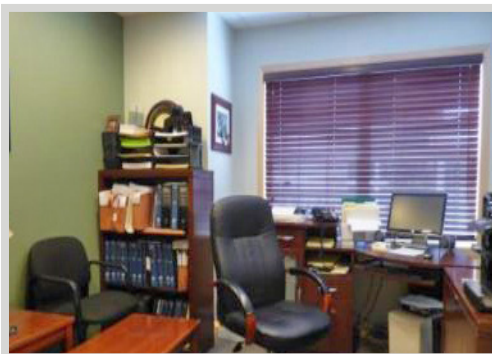
- 1,328 SF Office Condo - FOR LEASE in Maple Grove, MN.
- Includes 5 offices, kitchen area, bathroom & copy / fax area.
- Lower level courtyard entrance or stairway entrance from main level.
- Great for any small business!
- Great location near I-94 & Weaver Lake Road in Maple Grove, MN.

**Lease Rate:**

**Negotiable**

Tax & Cam - \$3.53 / psf

\*\* Utilities separately metered



Overview .....	1
Aerial Maps .....	2
Floor plans .....	3
Dimensions .....	4
Photo Gallery .....	5
City Information .....	6



**Chad Weeks**

612.619.9911

cweeks@arrowcos.com



**Jeff Penfield**

612.325.2067

jpenfield@arrowcos.com

### Contact

Phone: 763.424.6355

Fax: 763.424.7980

Arrow Companies

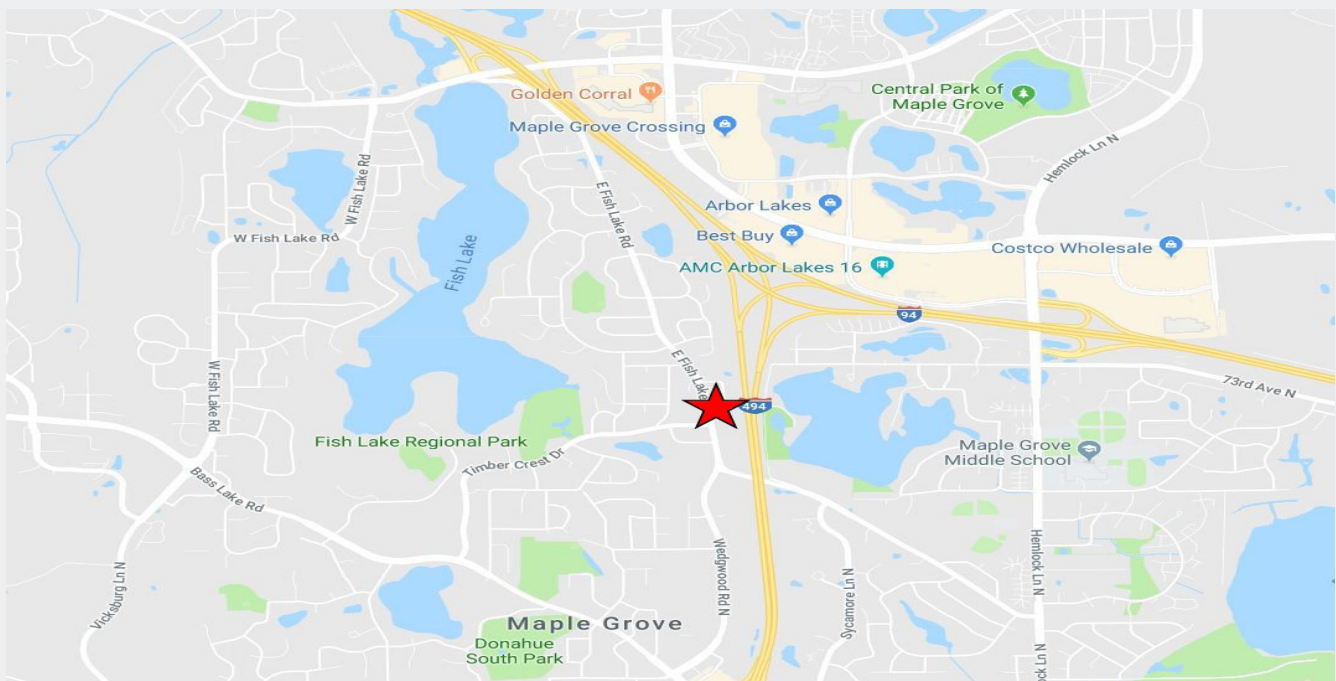
7365 Kirkwood Court N. Suite 335

Maple Grove, MN 55369

[www.arrowcos.com](http://www.arrowcos.com)

AERIAL & MAP

FOR LEASE  
1,328 SF Office Condo



Contact

Phone: 763.424.6355

Fax: 763.424.7980

Arrow Companies

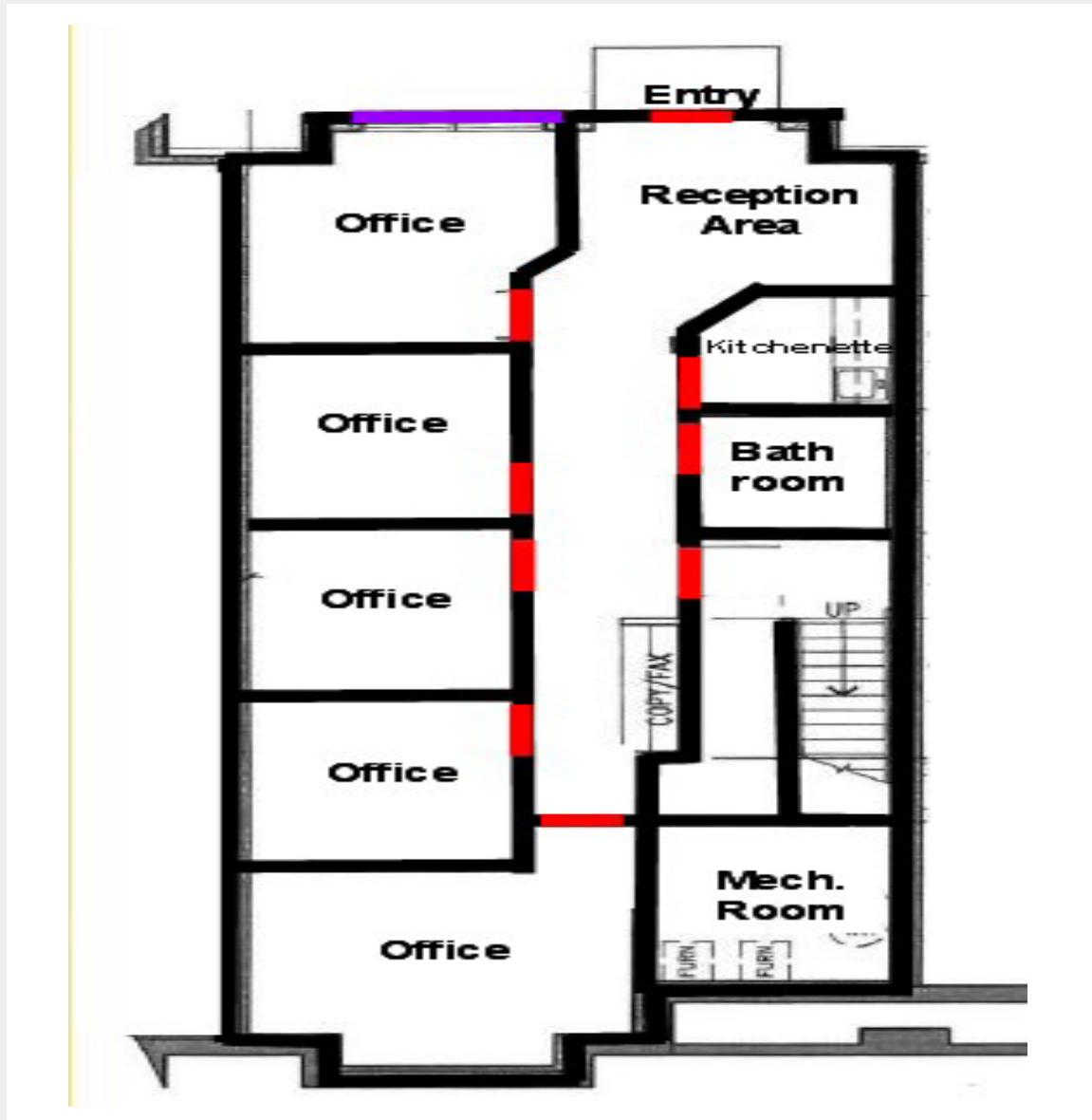
7365 Kirkwood Court N. Suite 335

Maple Grove, MN 55369

[www.arrowcos.com](http://www.arrowcos.com)

FLOOR PLAN

**FOR LEASE**  
**1,328 SF Office Condo**



**Contact**

Phone: 763.424.6355

Fax: 763.424.7980

Arrow Companies

7365 Kirkwood Court N. Suite 335

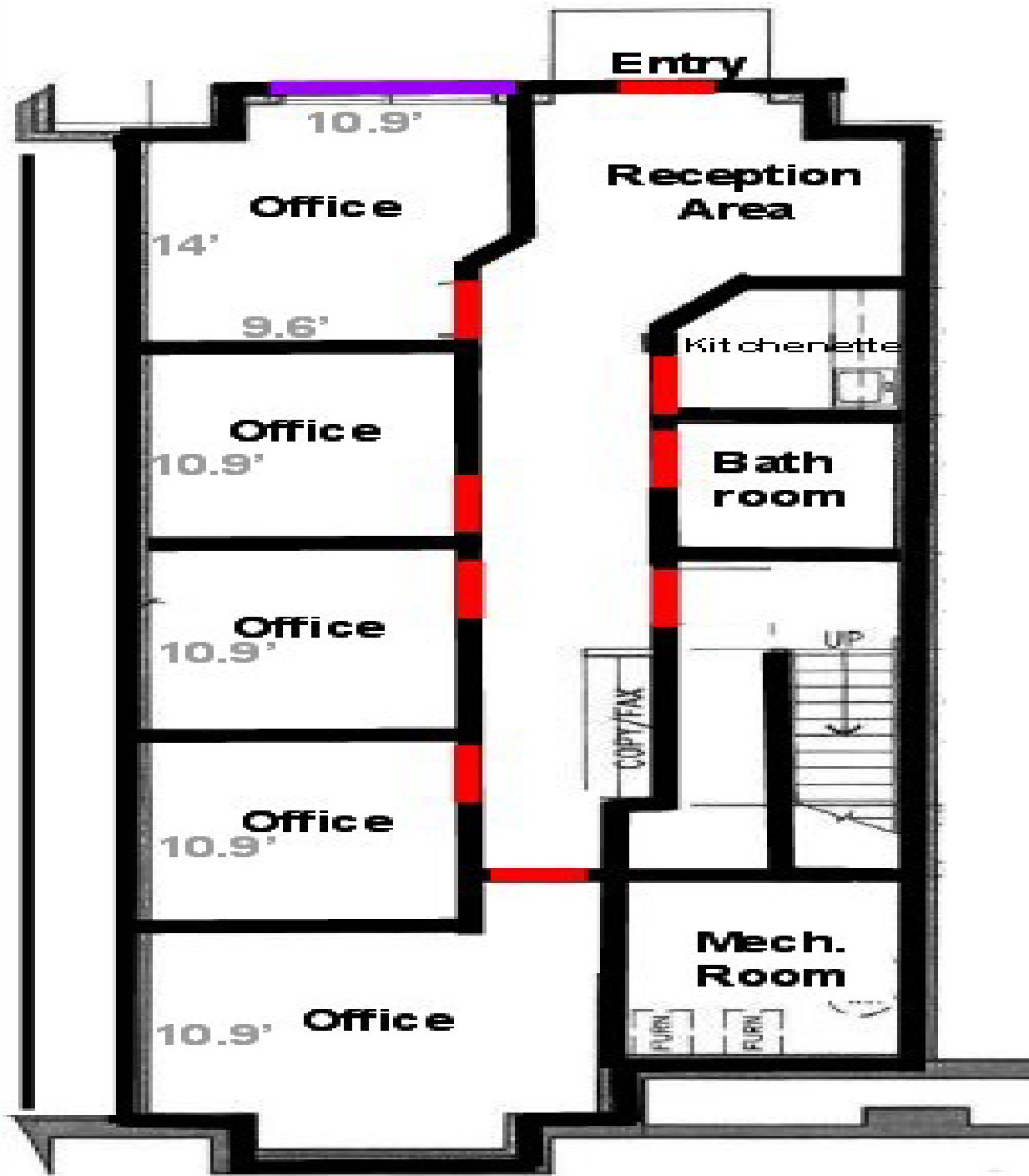
Maple Grove, MN 55369

[www.arrowcos.com](http://www.arrowcos.com)



**DIMENSIONS**

**FOR LEASE**  
**1,328 SF Office Condo**



**Contact**

Phone: 763.424.6355

Fax: 763.424.7980

Arrow Companies

7365 Kirkwood Court N. Suite 335

Maple Grove, MN 55369

[www.arrowcos.com](http://www.arrowcos.com)

**PHOTO GALLERY**

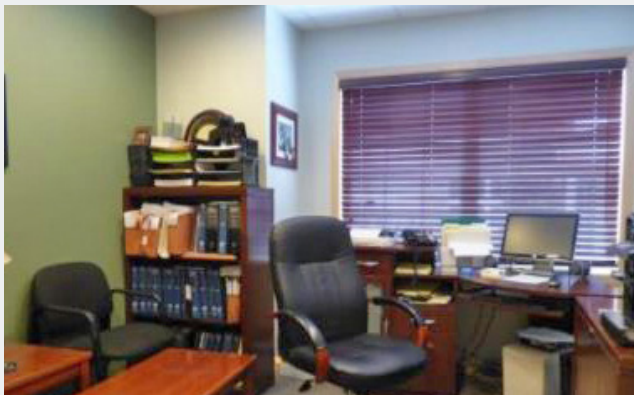
**FOR LEASE**  
**1,328 SF Office Condo**



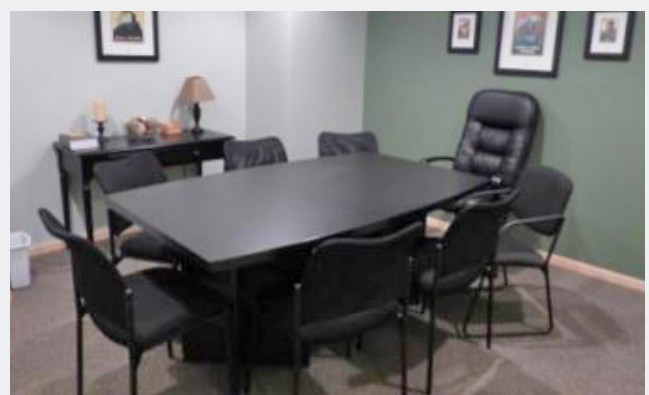
Courtyard Front



Courtyard



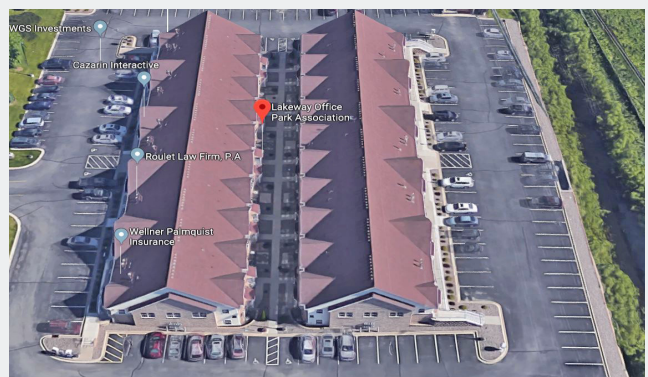
Office



Office



Front View



Parking

**Contact**

Phone: 763.424.6355

Fax: 763.424.7980

Arrow Companies

7365 Kirkwood Court N. Suite 335

Maple Grove, MN 55369

[www.arrowcos.com](http://www.arrowcos.com)



## CITY INFORMATION

FOR LEASE  
1,328 SF Office Condo

POPULATION (5 MILE RADIUS)	2010 Census - 163,691 2018 (Estimate) - 182,170 2023 (Projection) - 190,553
AVERAGE HOUSEHOLD INCOME	2018 (Estimate) - \$106,904
TRAFFIC	I-494 - 81,000 vehicles per day East Fish Lake Road - 8,000 vehicles per day
CITY OF MAPLE GROVE	<p><b>M</b>aple Grove is a flourishing community in the Twin Cities metro area that over 61,000 residents proudly call home. Just twenty minutes from Minneapolis and forty-five minutes from the Minneapolis/St. Paul International Airport, citizens receive every amenity of a large city and the peace and charm of a small town.</p> <p>Rated high by citizens as a great place to raise children, Maple Grove offers plenty of opportunities for residents to live life to the fullest. Looking for something to do with the family? Look no further than the Maple Grove Community Center which has indoor/outdoor play-grounds, ice skating, indoor/outdoor pools, and picnic area. It is also the site of the Maple Grove Farmers Market where fresh food and fun are in abundance. Check out the many community concerts and family activities at the Town Green. Don't miss the annual Maple Grove Days festivities in July and numerous community events sponsored by local businesses and community organizations.</p> <p>Maple Grove is also a great place for commerce and has a solid business community in which a number of highly regarded businesses continue to thrive.</p> <p>Maple Grove has a wide range of housing options available; from rental to charming single family homes to townhouses with scenic views to exciting senior living communities and everything in between. Most of the developments come complete with play areas which are perfect for those with families or looking to start a family. Subdivisions are also within close proximity to multiple shopping and dining options so convenience is something that's around every corner.</p>

### Contact

Phone: 763.424.6355

Fax: 763.424.7980

Arrow Companies

7365 Kirkwood Court N. Suite 335

Maple Grove, MN 55369

[www.arrowcos.com](http://www.arrowcos.com)