



## Forestview Office Park

7218 Forestview Lane N.

Maple Grove, MN 55369

FOR LEASE - 1,344 SF Office Condo



### FEATURES:

- 1,344 SF End Cap Office Condo - FOR LEASE in Maple Grove, MN.
- Garden Level unit which includes 4 offices, bathroom, kitchenette & open area.
- Perfect for any small business!
- Great location near I-94 & Hemlock in Maple Grove, MN.

### Lease Rate:

**\$14.00 / psf**

Taxes \$2.48 / psf

Cam \$1.39 / psf

(Utilities billed Separately)

|                        |   |
|------------------------|---|
| Overview .....         | 1 |
| Aerial Maps .....      | 2 |
| Floor plans .....      | 3 |
| Floor Plans .....      | 4 |
| Photo Gallery .....    | 5 |
| City Information ..... | 6 |



**Chad Weeks**

612.619.9911

cweeks@arrowcos.com



**Jeff Penfield**

612.325.2067

jpenfield@arrowcos.com

### Contact

Phone: 763.424.6355

Fax: 763.424.7980

Arrow Companies

7365 Kirkwood Court N. Suite 335

Maple Grove, MN 55369

[www.arrowcos.com](http://www.arrowcos.com)





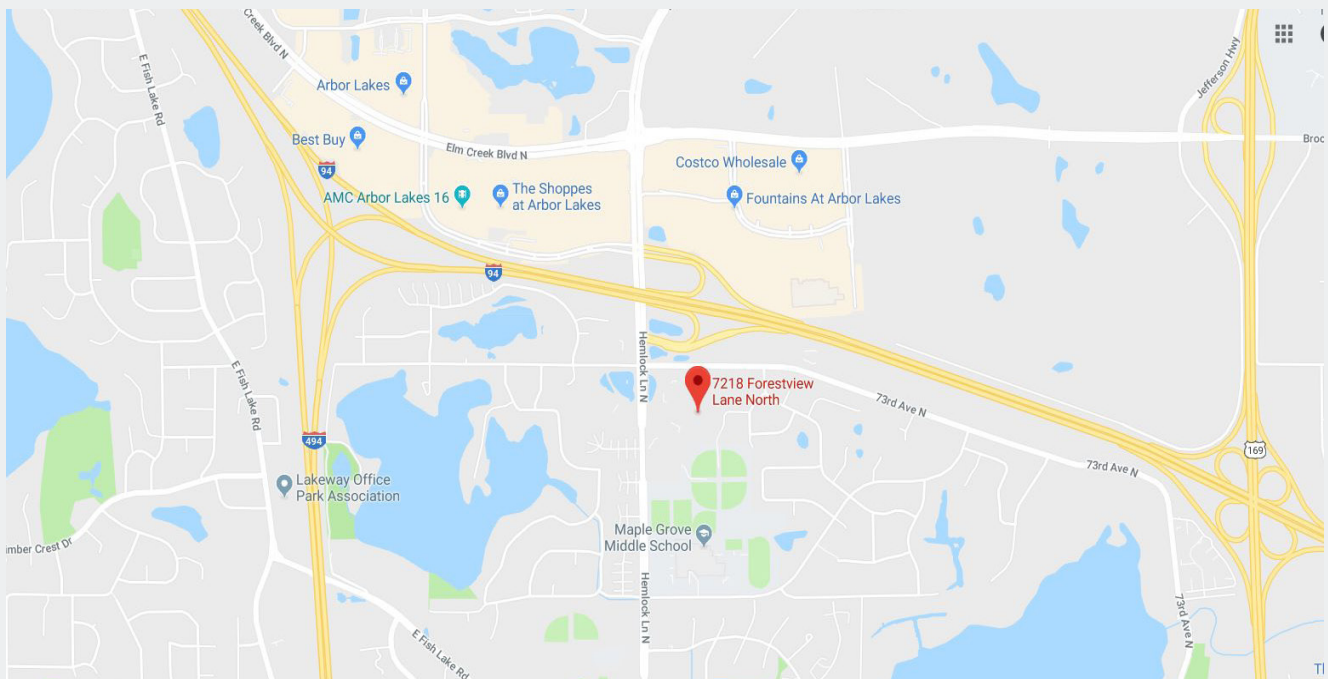
## Forestview Office Park

7218 Forestview Lane N.

Maple Grove, MN 55369

AERIAL & MAP

FOR LEASE - 1,344 SF Office Condo



### Contact

Phone: 763.424.6355

Fax: 763.424.7980

### Arrow Companies

7365 Kirkwood Court N. Suite 335

Maple Grove, MN 55369

[www.arrowcos.com](http://www.arrowcos.com)



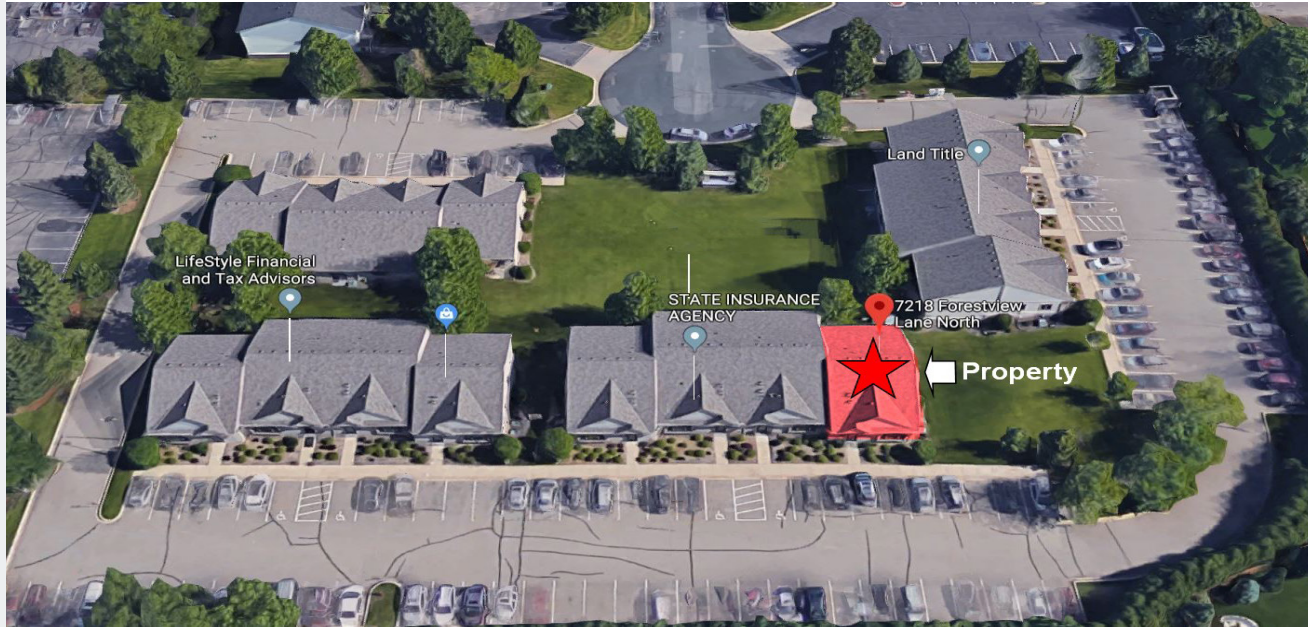
## Forestview Office Park

7218 Forestview Lane N.

Maple Grove, MN 55369

SITE PLAN

FOR LEASE - 1,344 SF Office Condo



### Contact

Phone: 763.424.6355

Fax: 763.424.7980

Arrow Companies

7365 Kirkwood Court N. Suite 335

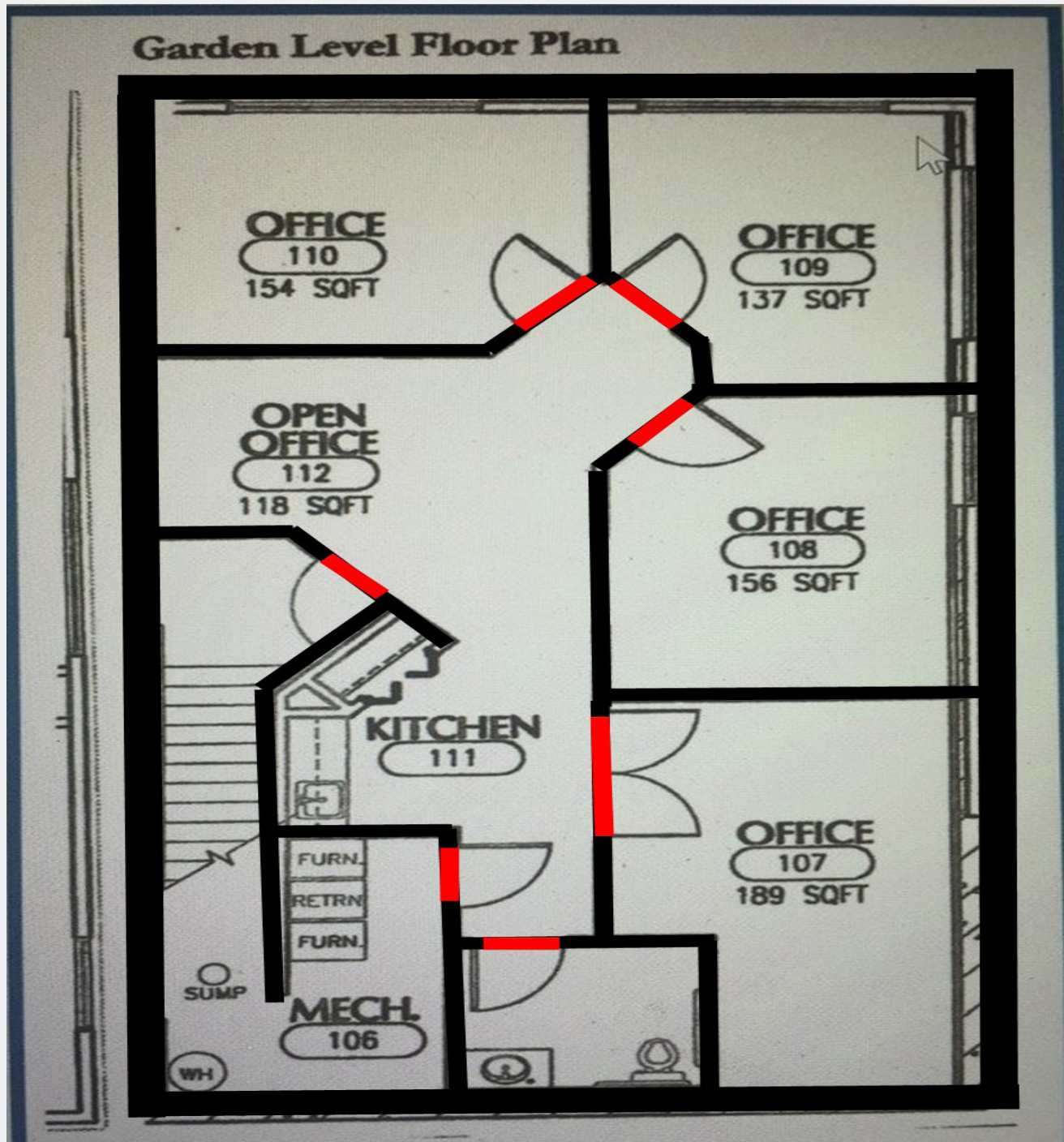
Maple Grove, MN 55369

[www.arrowcos.com](http://www.arrowcos.com)



FLOOR PLAN

FOR LEASE - 1,344 SF Office Condo



**Contact**

Phone: 763.424.6355  
Fax: 763.424.7980

Arrow Companies  
7365 Kirkwood Court N. Suite 335  
Maple Grove, MN 55369

[www.arrowcos.com](http://www.arrowcos.com)

**PHOTO GALLERY**

**FOR LEASE - 1,344 SF Office Condo**



Office



Office



Open area



Office



Kitchenette



Office

**Contact**

Phone: 763.424.6355  
Fax: 763.424.7980

Arrow Companies  
7365 Kirkwood Court N. Suite 335  
Maple Grove, MN 55369

[www.arrowcos.com](http://www.arrowcos.com)



CITY INFORMATION

FOR LEASE - 1,344 SF Office Condo

|                               |  |
|-------------------------------|--|
| POPULATION<br>(5 MILE RADIUS) | 2010 Census - 182,715<br>2018 (Estimate) - 202,066<br>2023 (Projection) - 211,159  |
| AVERAGE HOUSEHOLD<br>INCOME   | 2018 (Estimate) - \$102,715  |
| TRAFFIC                       | Hemlock Lane N. - 19,900 vehicles per day<br>Interstate 95 - 104,370 vehicles per day  |
| CITY OF MAPLE GROVE           | <p><i>M</i>aple Grove is a flourishing community in the Twin Cities metro area that over 61,000 residents proudly call home. Just twenty minutes from Minneapolis and forty-five minutes from the Minneapolis/St. Paul International Airport, citizens receive every amenity of a large city and the peace and charm of a small town.</p> <p>Set within the heart of Hennepin County, Maple Grove's vibrant history dates back to the mid 1800s when the Winnebago Indians were settled in the area. Today, over 1,000 businesses operate in this progressive city which offers people quality health-care, year-round recreational activities, and an excellent standard of living.</p> <p>Rated high by citizens as a great place to raise children, Maple Grove offers plenty of opportunities for residents to live life to the fullest. Looking for something to do with the family? Look no further than the Maple Grove Community Center which has indoor/outdoor play-grounds, ice skating, indoor/outdoor pools, and picnic area. It is also the site of the Maple Grove Farmers Market where fresh food and fun are in abundance. Check out the many community concerts and family activities at the Town Green. Don't miss the annual Maple Grove Days festivities in July and numerous community events sponsored by local businesses and community organizations.</p> <p>Maple Grove is also a great place for commerce and has a solid business community in which a number of highly regarded businesses continue to thrive.</p> <p>Maple Grove has a wide range of housing options available; from rental to charming single family homes to townhouses with scenic views to exciting senior living communities and everything in between. Most of the developments come complete with play areas which are perfect for those with families or looking to start a family. Subdivisions are also within close proximity to multiple shopping and dining options so convenience is something that's around every corner.</p> |

Contact

Phone: 763.424.6355

Fax: 763.424.7980

Arrow Companies

7365 Kirkwood Court N. Suite 335

Maple Grove, MN 55369

[www.arrowcos.com](http://www.arrowcos.com)