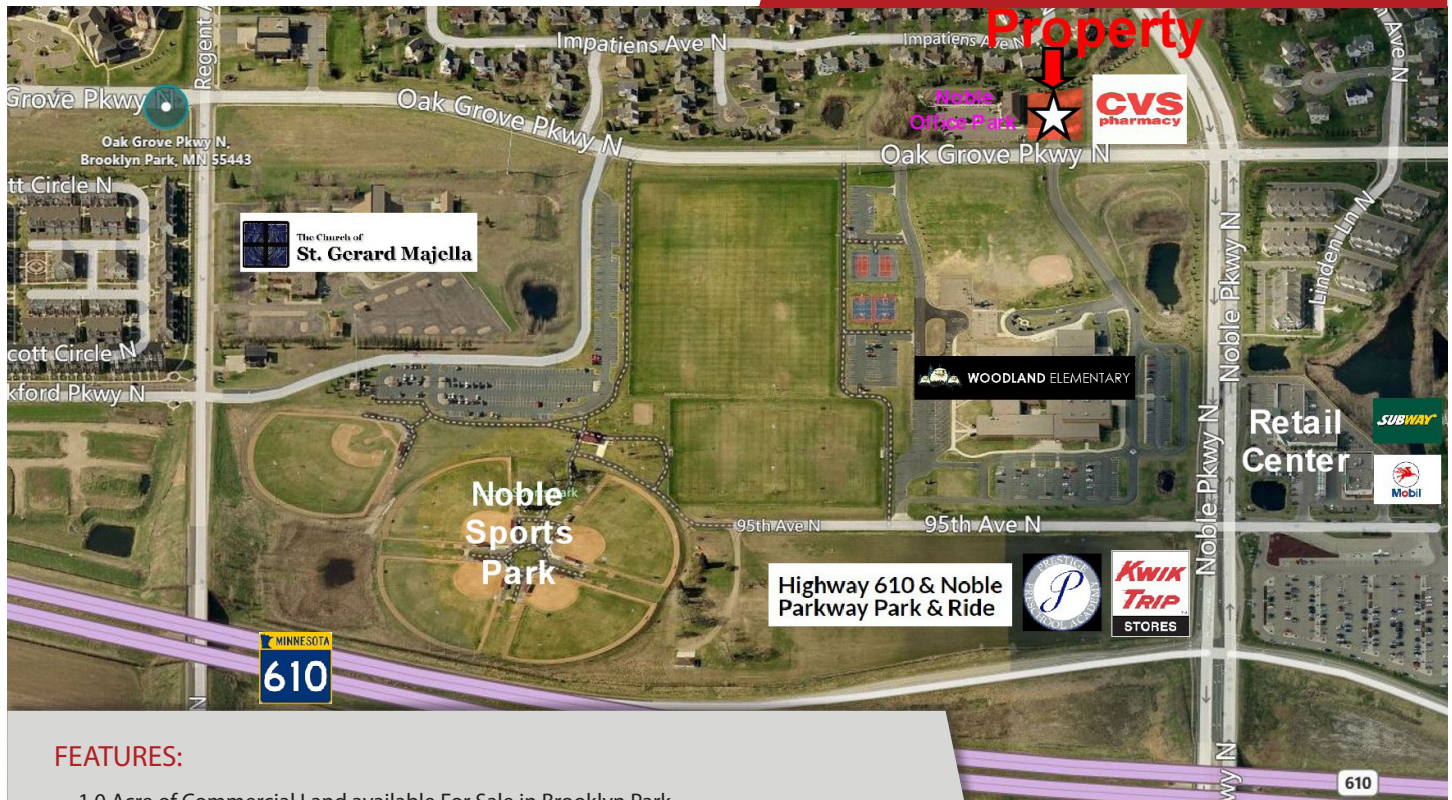


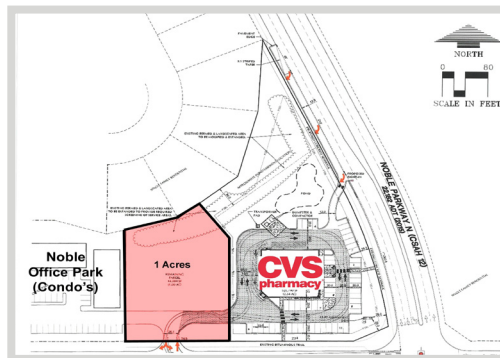
FOR SALE - 1.0 Acres (LAND)



FEATURES:

- 1.0 Acre of Commercial Land available For Sale in Brooklyn Park.
- Great location! Minutes away from Hwy. 610.
- Located next to CVS Pharmacy (to open in 2018) & Noble Office Park.
- Convenient location, situated near schools, residential & highway.
- Zoned (Commercial PUD).

Sale Price:
\$350,000



| | |
|-------------------|---|
| Overview | 1 |
| Aerial Maps | 2 |
| Floor Plan | 3 |
| City Info | 4 |



Chad Weeks
612.619.9911
cweeks@arrowcos.com



Jeff Penfield
612.325.2067
jpenfield@arrowcos.com

Contact

Phone: 763.424.6355
Fax: 763.424.7980

Arrow Companies
7365 Kirkwood Court N. Suite 335
Maple Grove, MN 55369

www.arrowcos.com



COMMERCIAL LAND

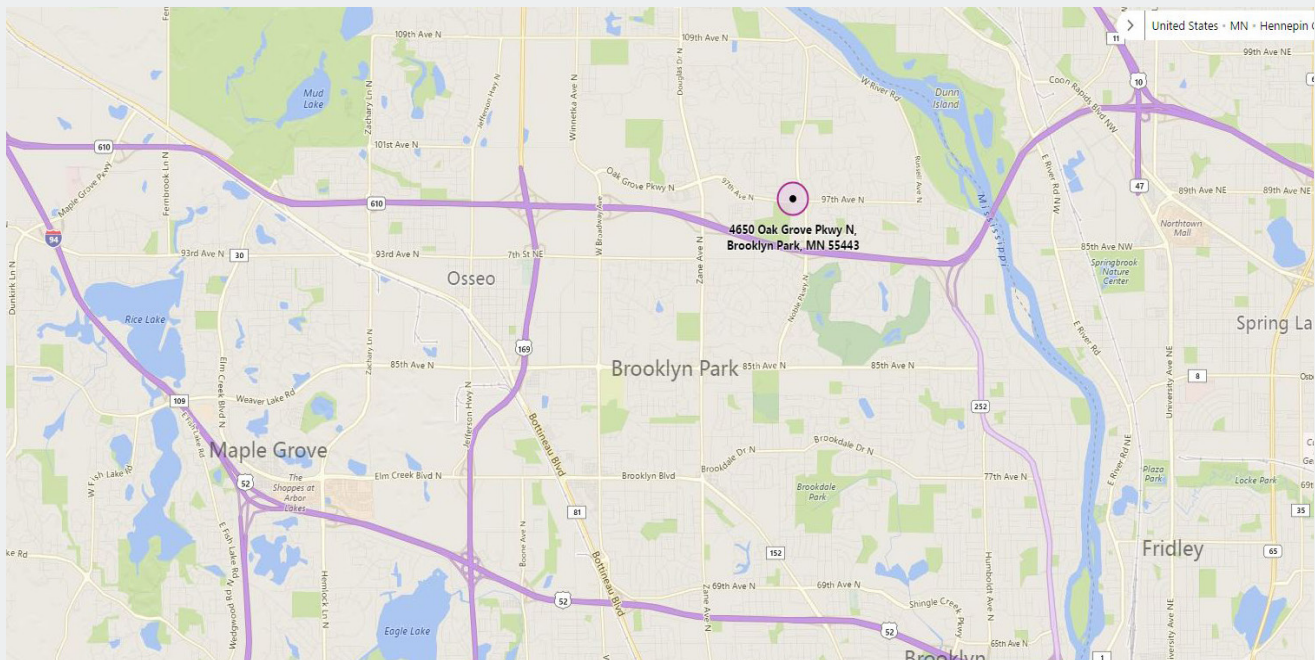
Oak Grove Parkway
Brooklyn Park, MN 55443

AERIAL & MAP

FOR SALE

-

1.0 Acres (LAND)



Contact

Phone: 763.424.6355

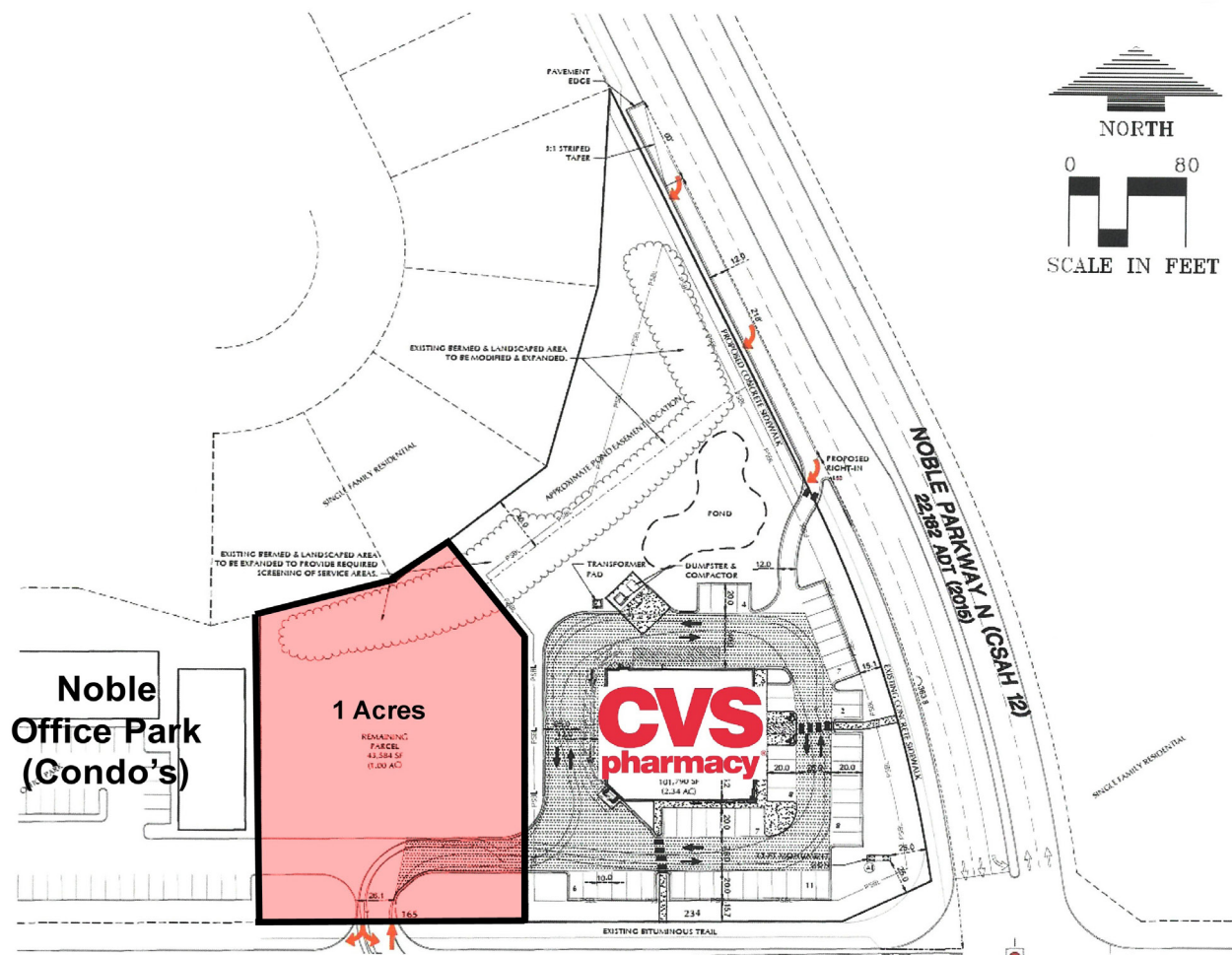
Fax: 763.424.7980

Arrow Companies

7365 Kirkwood Court N. Suite 335

Maple Grove, MN 55369

www.arrowcos.com






COMMERCIAL LAND

Oak Grove Parkway
Brooklyn Park, MN 55443

BROOKLYN PARK INFO

FOR SALE - 1.0 Acres (LAND)

| | |
|---|--|
| POPULATION (5 MILE RADIUS) *CoStar Data | 2010 Census - 216,549 2017 (Estimate) - 227,256 2022 (Projection) - 236,553 |
| AVERAGE HOUSEHOLD INCOME *CoStar Data | 2017 (Estimate) - \$120,256 within 1 mile |
| TRAFFIC *CoStar Data | Noble Ave. N. - 18,882 vehicles per day 95th Ave. N. - 20,649 vehicles per day Oak Grove Parkway - 4,891 vehicles per day |
| CITY OF BROOKLYN PARK | <p>Welcome to Brooklyn Park!</p> <p>With a population of more than 77,000 people, Brooklyn Park is the sixth-largest city in Minnesota and the fourth largest in the metropolitan area. We are a community that believes our residents are our strongest asset and the key to making Brooklyn Park thrive and prosper. Nestled along the Mississippi River, Brooklyn Park features almost 2,000 acres of parkland, two golf courses and 120 miles of trails for outdoor enthusiasts. We are also home to a community center which features a gymnasium, two hockey rinks, meeting rooms, racquetball courts and a senior center. Brooklyn Park has a residential housing stock that fits into just about every budget. We also have a unique mix of retail, commercial and industrial businesses. We make sure the needs of residents always come first. As part of our Community Engagement Initiative, we always make residents and stakeholders primary when it comes to important decision making. It is our mandate to consistently work to engage Brooklyn Park residents to make sure diverse viewpoints are shared openly and honestly. We are a proud and active community with numerous youth, adult and senior organizations, including important citizen boards that enrich our community. With all this, there is no question, Brooklyn Park is a thriving community inspiring pride where opportunities exist for all.</p> <p>Business and Development</p> <p>Brooklyn Park is a great place to locate a business. A growing population, convenient access to the Twin Cities metropolitan area, available commercial and industrial space, and well-planned infrastructure all contribute to Brooklyn Park's opportunities and advantages. The city works hard to ensure that Brooklyn Park is attractive and supportive to new and existing businesses of all sizes. Staff strives to link development opportunities with the proper tools and resources in order to help existing businesses grow and prosper and to attract new business and industry to the community.</p>  |