



## Weaver Lake Office Park

11258 86th Ave. N.  
Maple Grove, MN 55369

**FOR SALE - 943 SF Office Condo**



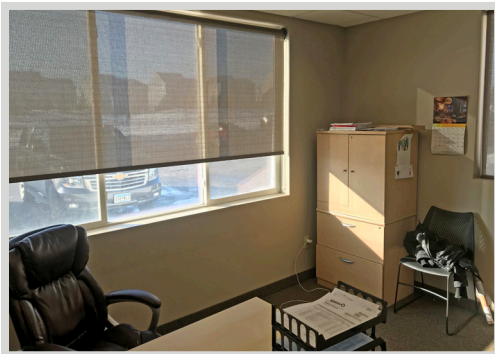
### FEATURES:

- 943 SF End Cap Office Condo - FOR SALE in Maple Grove, MN.
- 2 Private offices with windows with ability to add 3rd private office.
- Kitchenette, Bathroom & private entrance.
- Excellent visibility off Weaver Lake Rd with signage availability.
- Great location near I-94 & Hemlock in Maple Grove, MN.

### Sale Price

**\$149,900**

Association Dues- \$189.31/ month  
Taxes - \$2,707.06 (2018)



Overview .....	1
Aerial Maps .....	2
Property Facts .....	3
Floor Plans .....	4
Photo Gallery .....	5
City Information .....	6



**Chad Weeks**  
612.619.9911  
cweeks@arrowcos.com



**Jeff Penfield**  
612.325.2067  
jpenfield@arrowcos.com

### Contact

Phone: 763.424.6355  
Fax: 763.424.7980

### Arrow Companies

7365 Kirkwood Court N. Suite 335  
Maple Grove, MN 55369

[www.arrowcos.com](http://www.arrowcos.com)



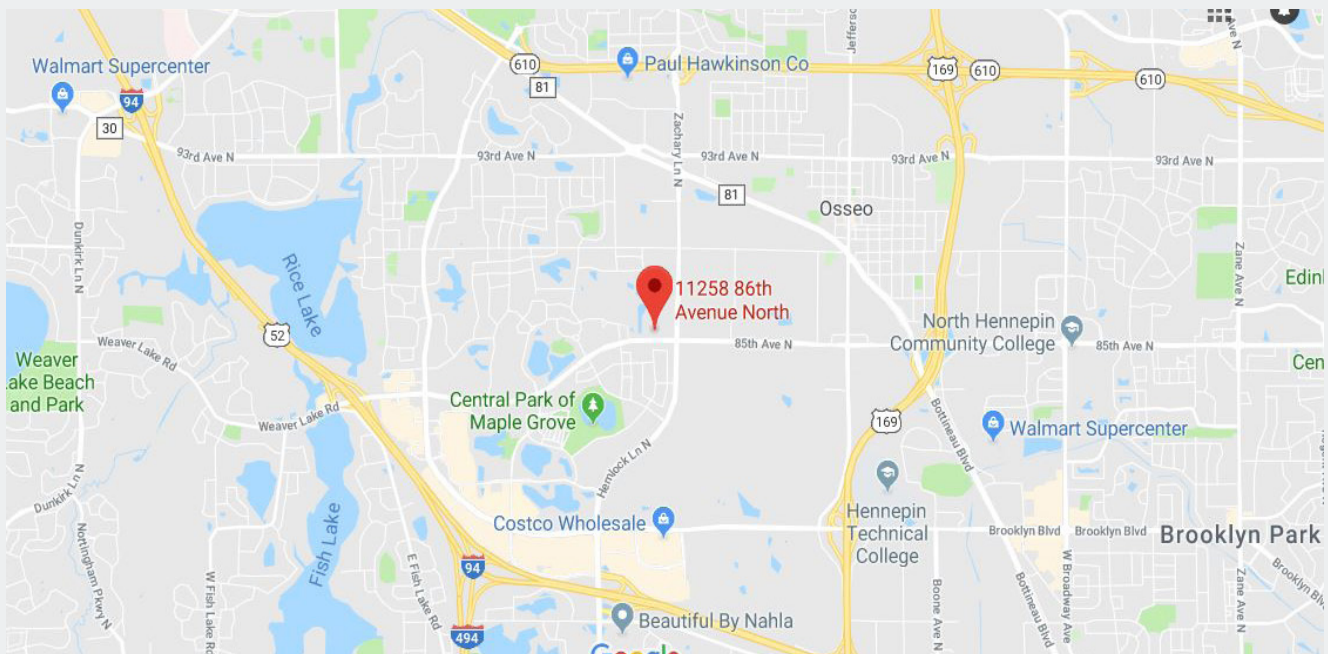
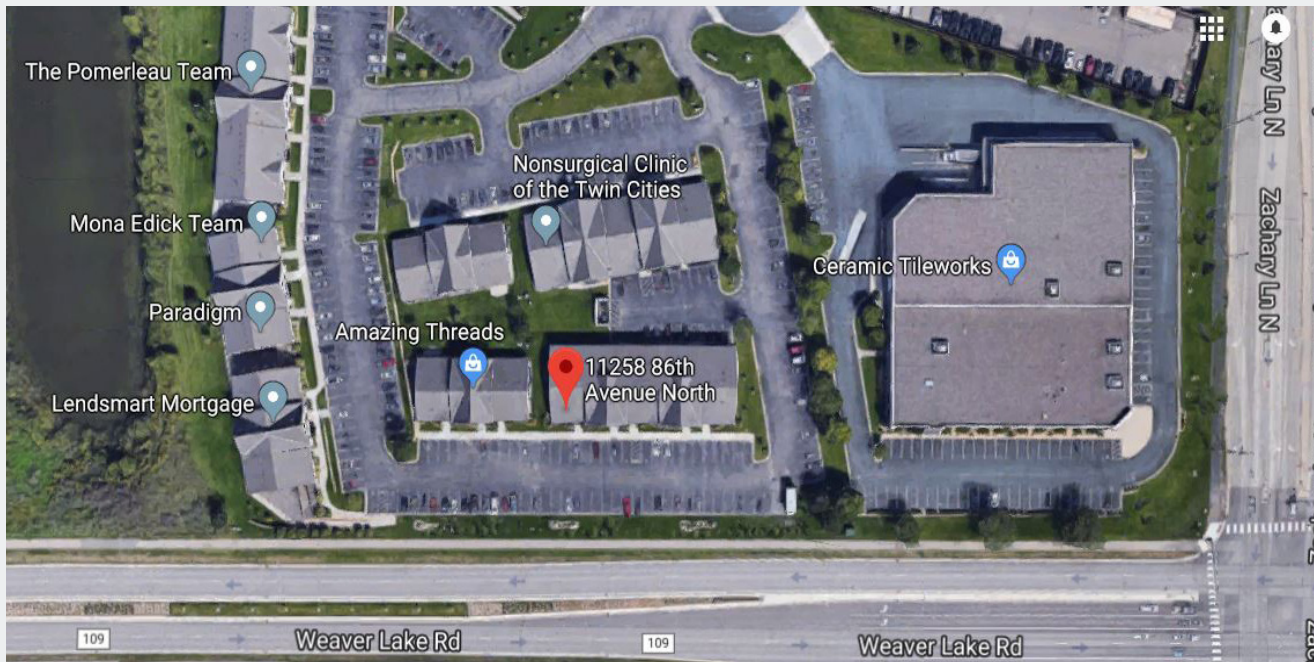


## Weaver Lake Office Park

11258 86th Ave. N.  
Maple Grove, MN 55369

**AERIAL & MAP**

**FOR SALE - 943 SF Office Condo**



### Contact

Phone: 763.424.6355  
Fax: 763.424.7980

### Arrow Companies

7365 Kirkwood Court N. Suite 335  
Maple Grove, MN 55369

[www.arrowcos.com](http://www.arrowcos.com)



## Weaver Lake Office Park

11258 86th Ave. N.  
Maple Grove, MN 55369

### PROPERTY FACTS

### FOR SALE - 943 SF Office Condo

BUILDING SIZE	934 SF
YEAR BUILT	2003
ASSOCIATION	Weaver Lake Office Park
PID #	14-119-22-44-0077
ZONING	Commercial Preferred
CONSTRUCTION	Wood Framed with Brick
HEATING & COOLING	One unit
ASSOCIATION DUES	\$189.31 per month
2018 REAL ESTATE TAXES	\$2,707.06

#### Contact

Phone: 763.424.6355  
Fax: 763.424.7980

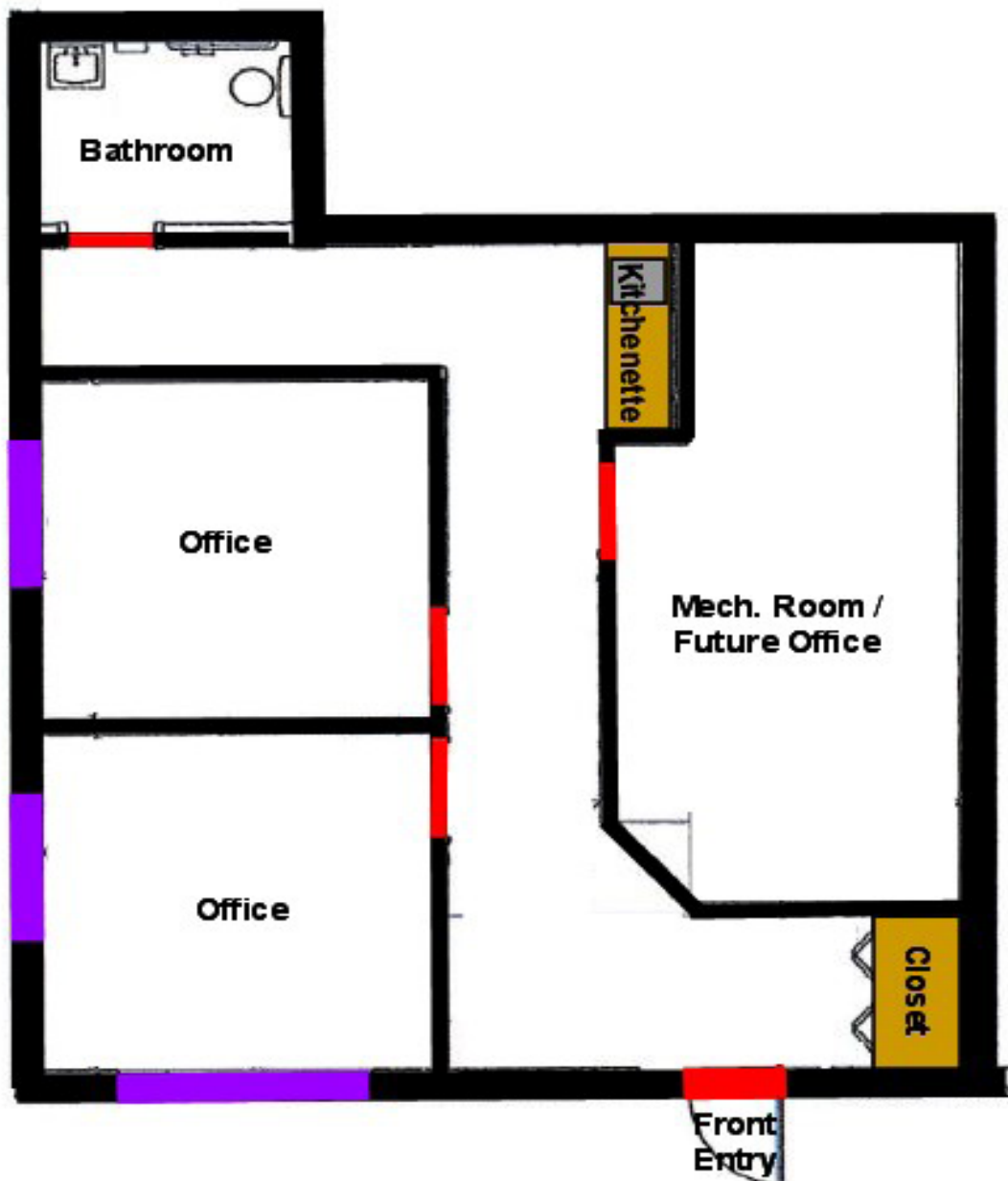
#### Arrow Companies

7365 Kirkwood Court N. Suite 335  
Maple Grove, MN 55369

[www.arrowcos.com](http://www.arrowcos.com)

**FLOOR PLAN**

**FOR SALE - 943 SF Office Condo**



**Contact**

Phone: 763.424.6355  
Fax: 763.424.7980

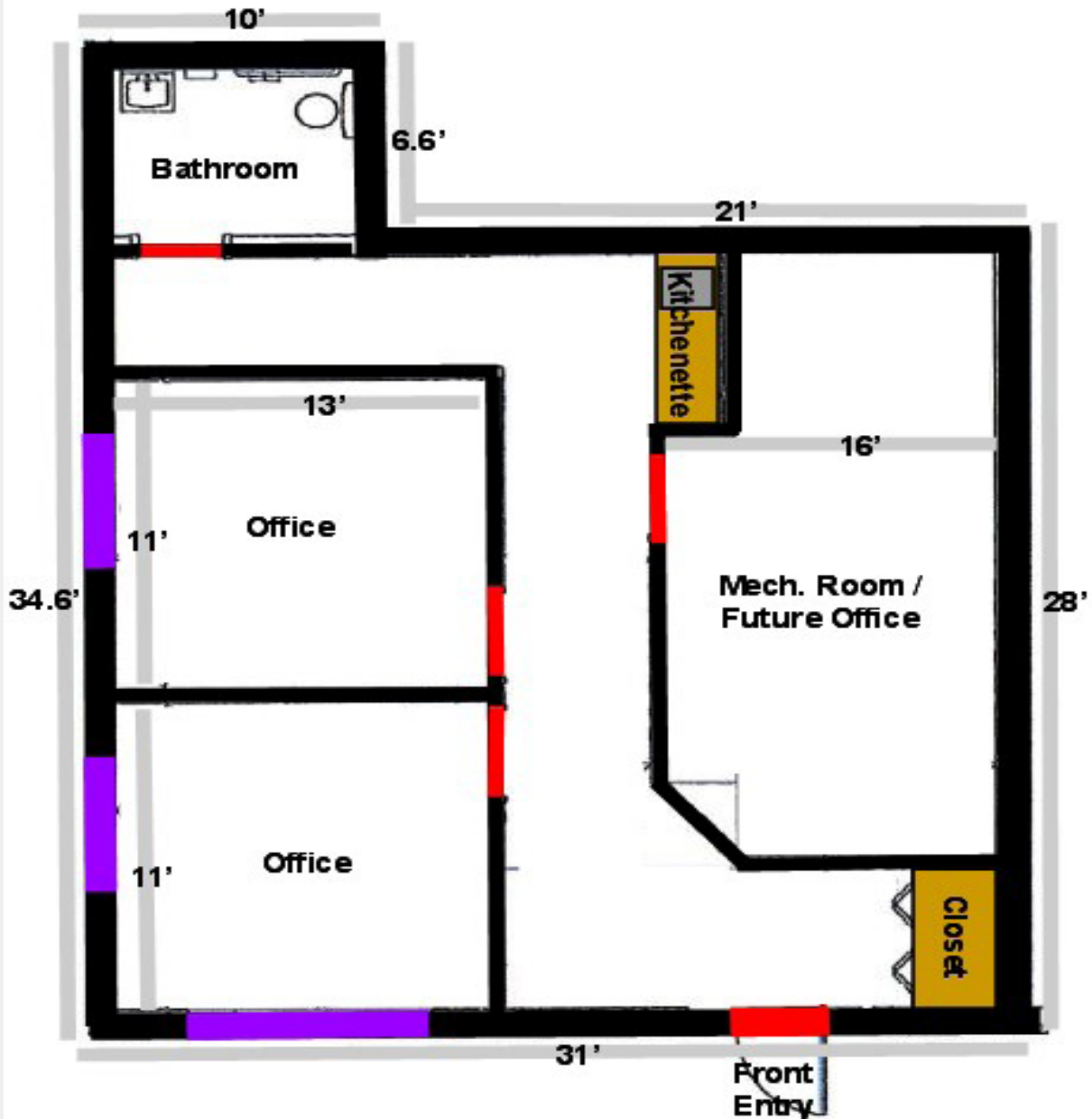
**Arrow Companies**

7365 Kirkwood Court N. Suite 335  
Maple Grove, MN 55369

[www.arrowcos.com](http://www.arrowcos.com)

**DIMENSIONS**

**FOR SALE - 943 SF Office Condo**



**Contact**

Phone: 763.424.6355  
Fax: 763.424.7980

**Arrow Companies**

7365 Kirkwood Court N. Suite 335  
Maple Grove, MN 55369

[www.arrowcos.com](http://www.arrowcos.com)





Front View



Front Office



Kitchenette



Side Office



Front Area



Hallway View

**Contact**

Phone: 763.424.6355  
Fax: 763.424.7980

**Arrow Companies**

7365 Kirkwood Court N. Suite 335  
Maple Grove, MN 55369

[www.arrowcos.com](http://www.arrowcos.com)



## Weaver Lake Office Park

11258 86th Ave. N.  
Maple Grove, MN 55369

### CITY INFORMATION

### FOR SALE - 943 SF Office Condo

POPULATION (5 MILE RADIUS)	2010 Census - 162,868 2017 (Estimate) - 174,473 2020 (Projection) - 185,342 <i>*CoStar Data</i>
AVERAGE HOUSEHOLD INCOME	2017 (Estimate) - \$94,575 <i>*CoStar Data</i>
TRAFFIC	Zachary Lane - 14,533 vehicles per day 85th Ave N. - 12,584 vehicles per day <i>*CoStar Data</i>
CITY OF MAPLE GROVE	<p>Maple Grove is a flourishing community in the Twin Cities metro area that over 61,000 residents proudly call home. Just twenty minutes from Minneapolis and forty-five minutes from the Minneapolis/St. Paul International Airport, citizens receive every amenity of a large city and the peace and charm of a small town.</p> <p>Set within the heart of Hennepin County, Maple Grove's vibrant history dates back to the mid 1800s when the Winnebago Indians were settled in the area. Today, over 1,000 businesses operate in this progressive city which offers people quality health-care, year-round recreational activities, and an excellent standard of living.</p> <p>Rated high by citizens as a great place to raise children, Maple Grove offers plenty of opportunities for residents to live life to the fullest. Looking for something to do with the family? Look no further than the Maple Grove Community Center which has indoor/outdoor play-grounds, ice skating, indoor/outdoor pools, and picnic area. It is also the site of the Maple Grove Farmers Market where fresh food and fun are in abundance. Check out the many community concerts and family activities at the Town Green. Don't miss the annual Maple Grove Days festivities in July and numerous community events sponsored by local businesses and community organizations.</p> <p>Maple Grove is also a great place for commerce and has a solid business community in which a number of highly regarded businesses continue to thrive.</p> <p>Maple Grove has a wide range of housing options available; from rental to charming single family homes to townhouses with scenic views to exciting senior living communities and everything in between. Most of the developments come complete with play areas which are perfect for those with families or looking to start a family. Subdivisions are also within close proximity to multiple shopping and dining options so convenience is something that's around every corner.</p>

#### Contact

Phone: 763.424.6355  
Fax: 763.424.7980

#### Arrow Companies

7365 Kirkwood Court N. Suite 335  
Maple Grove, MN 55369

[www.arrowcos.com](http://www.arrowcos.com)