



## Champlin Business Park

11149 Zealand Ave.  
Champlin, MN 55316

**FOR LEASE - 1,488 SF Office Space**



### FEATURES:

- 1,488 SF End Cap Office Condo located on main level.
- Includes 4 Private Offices with windows, Large Training Room with Full Kitchen.
- Large reception area including built in desk.
- High end upgrades including granite countertops
- Plenty of parking along with back door for additional spots.

### Lease Rate

**\$16.00/psf NNN**

Tax: \$2.75/ psf & Cam: \$1.94/psf



### FACTS:

- ▲ Convenient Location off Highway 169 in Champlin.
- ▲ Attic storage available.
- ▲ Rennovated in 2015.

Overview .....	1
Aerial Maps .....	2
Floor Plan .....	3
Photo Gallery .....	4



**Chad Weeks**  
612.619.9911  
cweeks@arrowcos.com



**Jeff Penfield**  
612.325.2067  
jpenfield@arrowcos.com

### Contact

Phone: 763.424.6355  
Fax: 763.424.7980

**Arrow Companies**  
7365 Kirkwood Court N. Suite 335  
Maple Grove, MN 55369

[www.arrowcos.com](http://www.arrowcos.com)



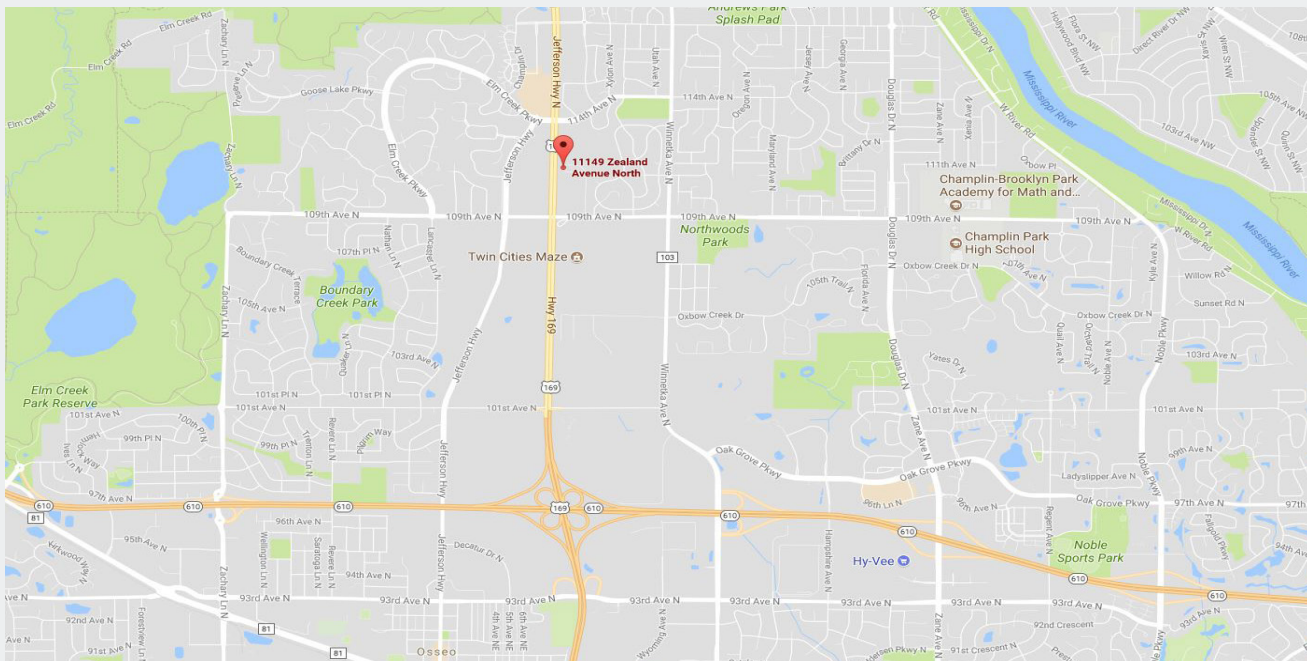


## Champlin Business Park

11149 Zealand Ave.  
Champlin, MN 55316

**AERIAL & MAP**

**FOR LEASE - 1,488 SF Office Space**



### Contact

Phone: 763.424.6355

Fax: 763.424.7980

### Arrow Companies

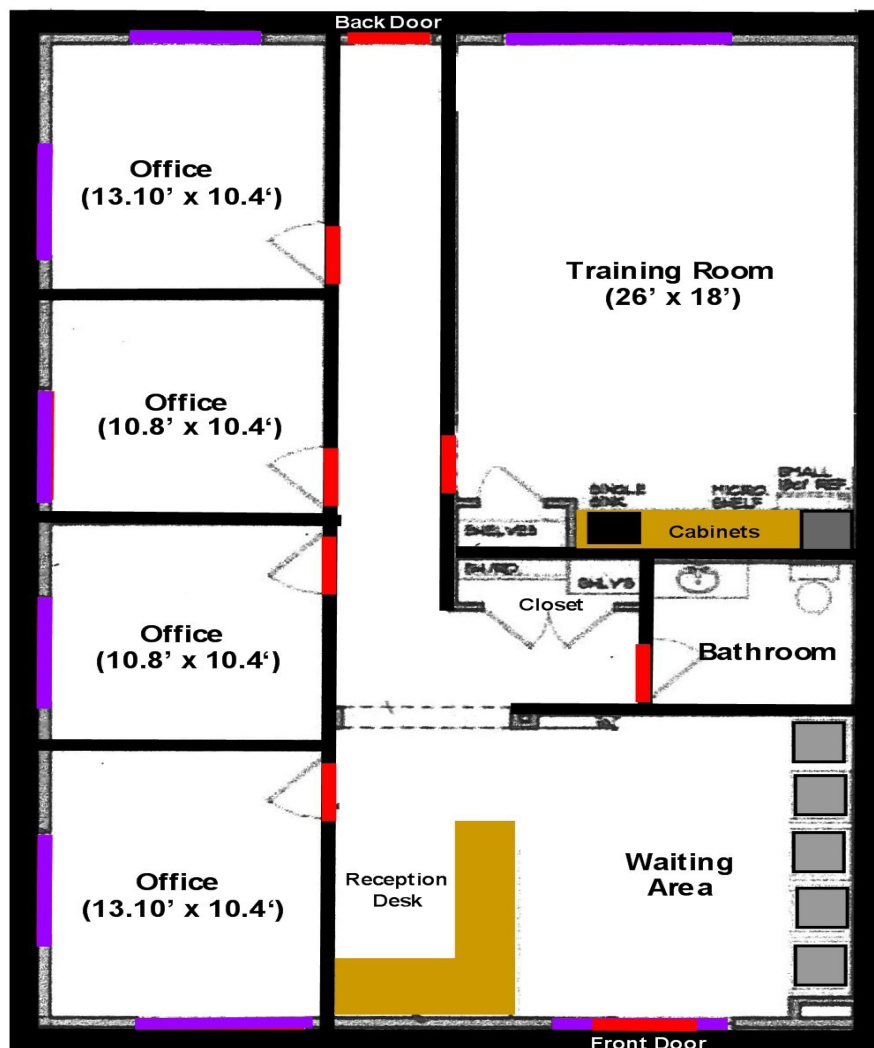
7365 Kirkwood Court N. Suite 335

Maple Grove, MN 55369

[www.arrowcos.com](http://www.arrowcos.com)

**FLOOR PLAN**

**FOR LEASE - 1,488 SF Office Space**



**Contact**

Phone: 763.424.6355

Fax: 763.424.7980

**Arrow Companies**

7365 Kirkwood Court N. Suite 335

Maple Grove, MN 55369

[www.arrowcos.com](http://www.arrowcos.com)



**PHOTO GALLERY**

**FOR LEASE - 1,488 SF Office Space**



Front Office



Reception Area



Reception Desk



Training Room



Kitchenette



Back View

**Contact**

Phone: 763.424.6355

Fax: 763.424.7980

**Arrow Companies**

7365 Kirkwood Court N. Suite 335

Maple Grove, MN 55369

[www.arrowcos.com](http://www.arrowcos.com)