

FOR LEASE - 4,864 SF Building



FEATURES:

- 4,864 SF Daycare Building - For Lease in Maple Grove off 610.
- Great location off 610 in quiet setting next to church.
- Move in ready for any daycare user.
- Floor plan allows for enrollment of 100+ kids.

Lease Rate

\$11.95 / psf NNN

TAXES: \$4.25 / psf
** Tenant pays own portion of CAM**



FACTS:

- ▲ PID 12-119-22-24-0065 (0.63 Acres)
- ▲ New Roof in 2008
- ▲ Building Height of 14 ft
- ▲ Masonry construction
- ▲ Built in 1980

Overview	1
Aerial Maps	2
Floor Plans	3
Photo Gallery	4
City of Maple Grove	5



Chad Weeks
612.619.9911
cweeks@arrowcos.com



Jeff Penfield
612.325.2067
jpenfield@arrowcos.com

Contact

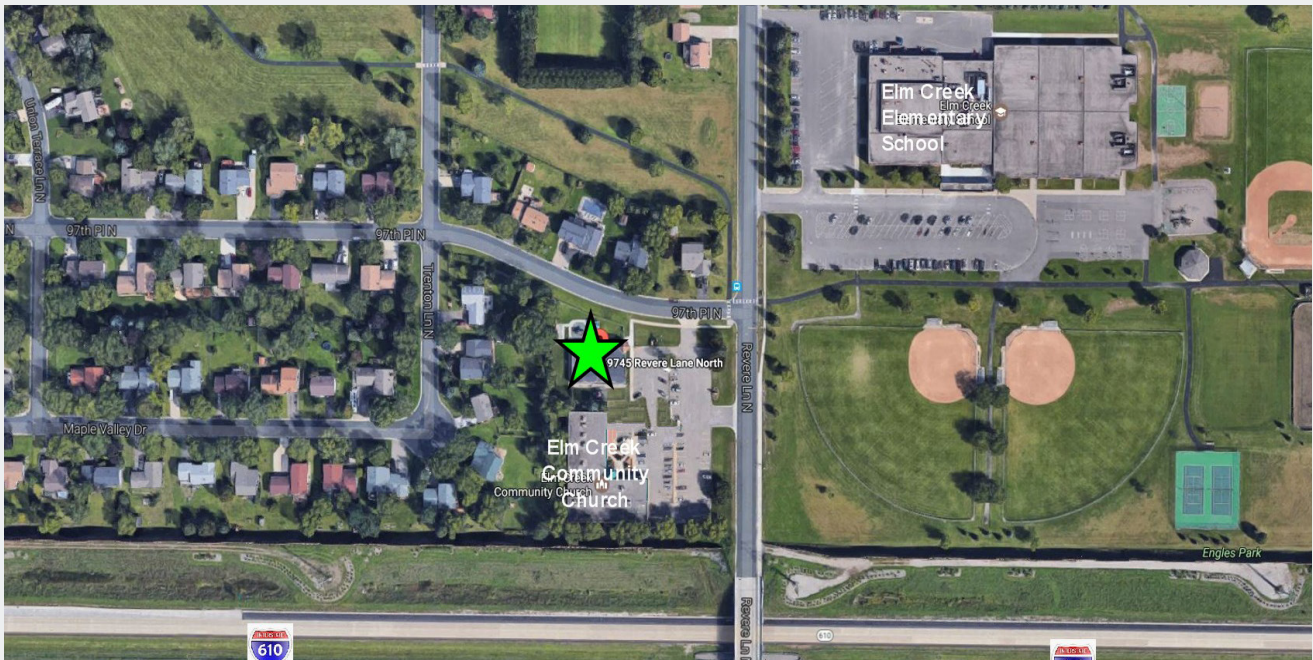
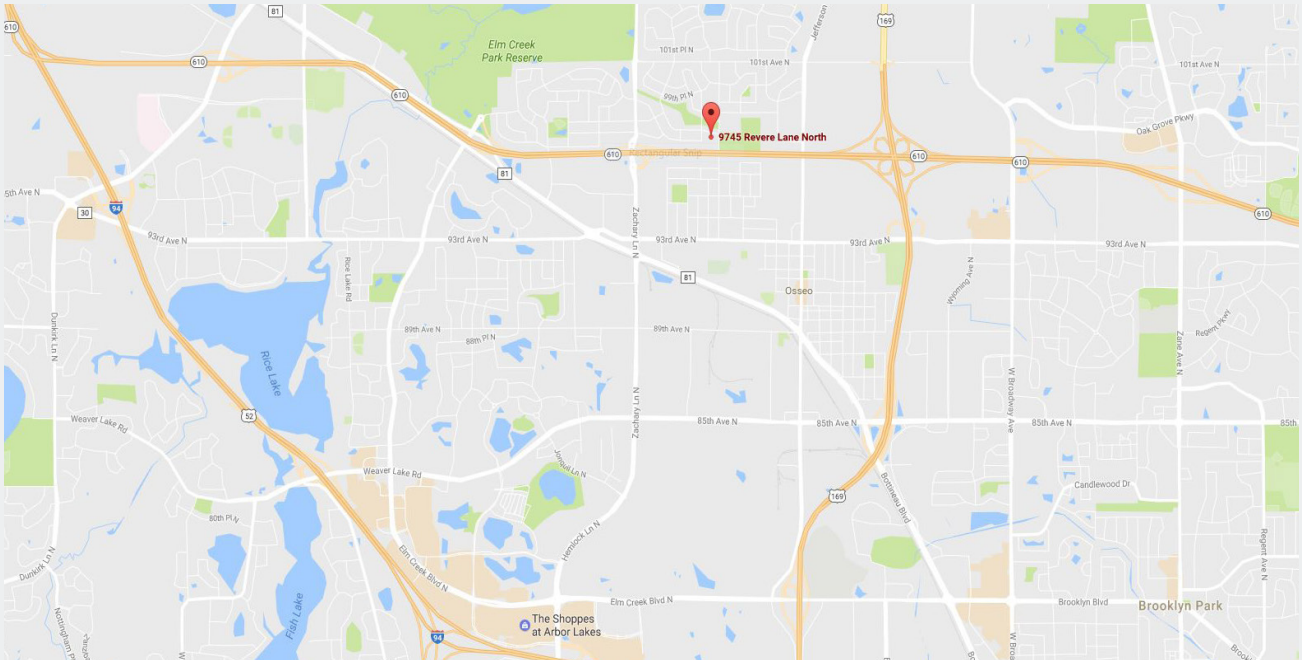
Phone: 763.424.6355
Fax: 763.424.7980

Arrow Companies
7365 Kirkwood Court N. Suite 335
Maple Grove, MN 55369

www.arrowcos.com

AERIAL & MAP

FOR LEASE - 4,864 SF Building



Contact

Phone: 763.424.6355

Fax: 763.424.7980

Arrow Companies

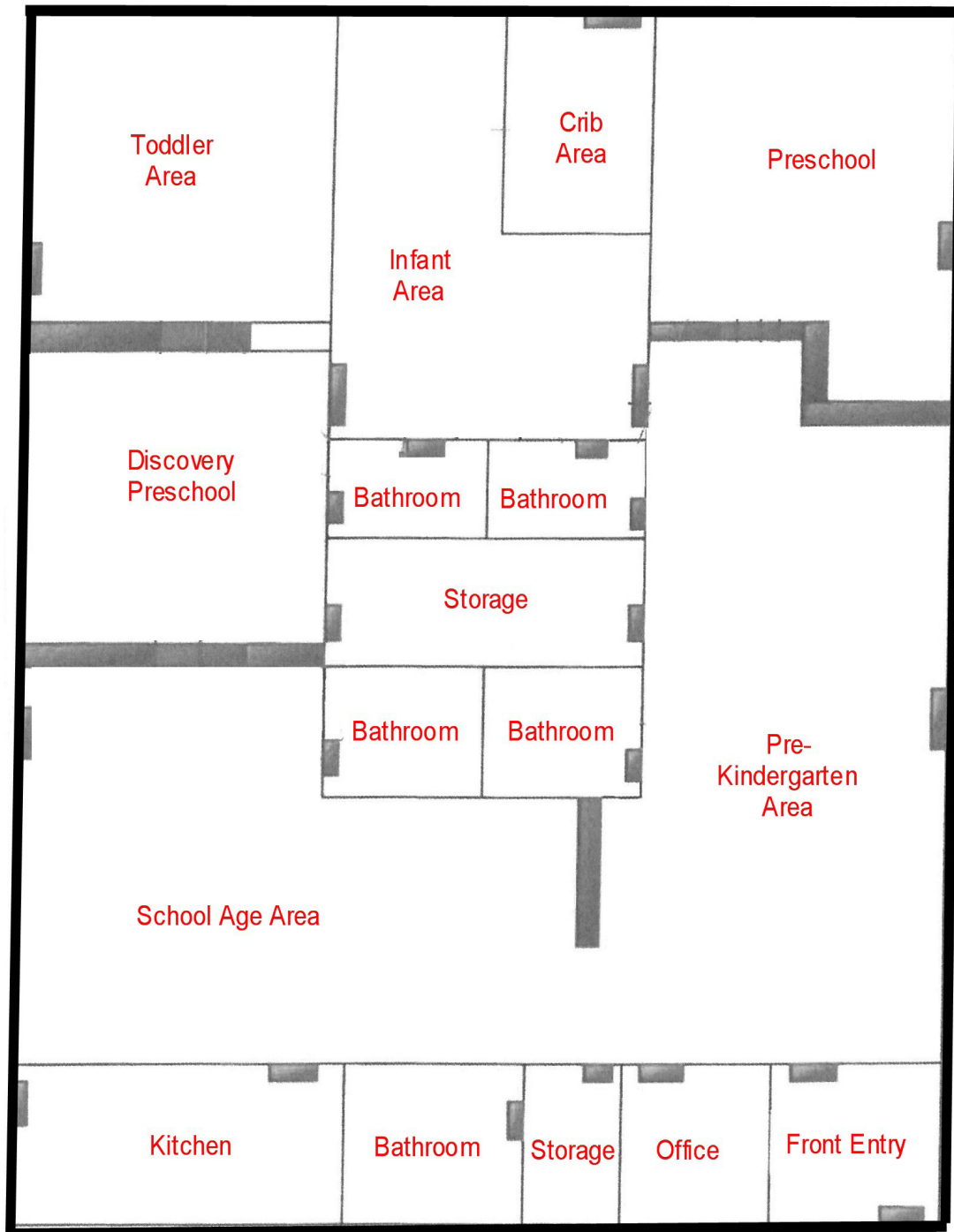
7365 Kirkwood Court N. Suite 335

Maple Grove, MN 55369

www.arrowcos.com

FLOOR PLAN

FOR LEASE - 4,864 SF Building



Contact

Phone: 763.424.6355
Fax: 763.424.7980

Arrow Companies

7365 Kirkwood Court N. Suite 335
Maple Grove, MN 55369

www.arrowcos.com



Contact

Phone: 763.424.6355
Fax: 763.424.7980

Arrow Companies

7365 Kirkwood Court N. Suite 335
Maple Grove, MN 55369

www.arrowcos.com

PHOTO GALLERY

FOR LEASE - 4,864 SF Building



Front Entry



Infant Area



Infant Area



Kitchen Area



Pre-School Area



Pre-School Area

Contact

Phone: 763.424.6355

Fax: 763.424.7980

Arrow Companies

7365 Kirkwood Court N. Suite 335

Maple Grove, MN 55369

www.arrowcos.com

CITY OF MAPLE GROVE

FOR LEASE - 4,864 SF Building

POPULATION (5 MILE RADIUS)	<p>2010 Census - 161,812 2016 (Estimate) - 172,870 20201(Projection) - 181,719 <i>*CoStar Data</i></p>
AVERAGE HOUSEHOLD INCOME	<p>2015 (Estimate) - \$64,590 <i>*CoStar Data</i></p>
TRAFFIC	<p>Revere Lane - 5,215 vehicles per day Zachary Lane - 13,700 vehicles per day <i>*CoStar Data</i></p>
CITY OF MAPLE GROVE	<p>Maple Grove is a flourishing community in the Twin Cities metro area that over 61,000 residents proudly call home. Just twenty minutes from Minneapolis and forty-five minutes from the Minneapolis/St. Paul International Airport, citizens receive every amenity of a large city and the peace and charm of a small town.</p> <p>Set within the heart of Hennepin County, Maple Grove's vibrant history dates back to the mid 1800s when the Winnebago Indians were settled in the area. Today, over 1,000 businesses operate in this progressive city which offers people quality health-care, year-round recreational activities, and an excellent standard of living.</p> <p>Rated high by citizens as a great place to raise children, Maple Grove offers plenty of opportunities for residents to live life to the fullest. Looking for something to do with the family? Look no further than the Maple Grove Community Center which has indoor/outdoor play-grounds, ice skating, indoor/outdoor pools, and picnic area. It is also the site of the Maple Grove Farmers Market where fresh food and fun are in abundance. Check out the many community concerts and family activities at the Town Green. Don't miss the annual Maple Grove Days festivities in July and numerous community events sponsored by local businesses and community organizations.</p> <p>Maple Grove is also a great place for commerce and has a solid business community in which a number of highly regarded businesses continue to thrive.</p> <p>Maple Grove has a wide range of housing options available; from rental to charming single family homes to townhouses with scenic views to exciting senior living communities and everything in between. Most of the developments come complete with play areas which are perfect for those with families or looking to start a family. Subdivisions are also within close proximity to multiple shopping and dining options so convenience is something that's around every corner.</p>

Contact

Phone: 763.424.6355

Fax: 763.424.7980

Arrow Companies

7365 Kirkwood Court N. Suite 335

Maple Grove, MN 55369

www.arrowcos.com