

**FOR LEASE** - 2,000 to 11,750 SF of Office Space



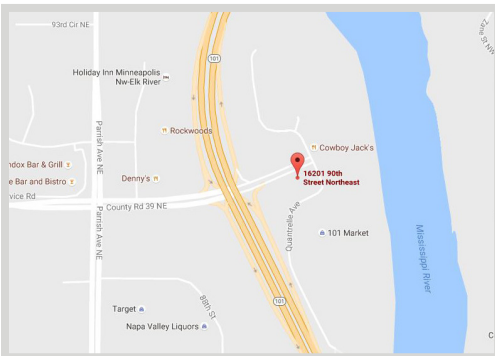
## FEATURES:

- Convenient location off Hwy 101 in Otsego with signage
- Anchor tenant: Keller Williams Realty
- Walking trails located along the Mississippi River
- Located in the vastly growing city of Otsego

Lease Rate

**\$13.00/psf NNN**

Tax: \$3.24 & Cam: \$5.13



## FACTS:

- ▲ Will sub-divide space (minimum 2,000 SF)
- ▲ Will build-to-suit
- ▲ Elevator to the second floor space
- ▲ Shared restrooms located on 2nd Floor
- ▲ Space available August 1, 2017

Overview .....	1
Aerial Maps .....	2
Floor Plans .....	3
Area Businesses .....	4
Photo Gallery .....	5-7



**Steve Fischer**  
612.619.9991  
sfischer@arrowcos.com



**Chad Weeks**  
612.619.9911  
cweeks@arrowcos.com

## Contact

Phone: 763.424.6355

Fax: 763.424.7980

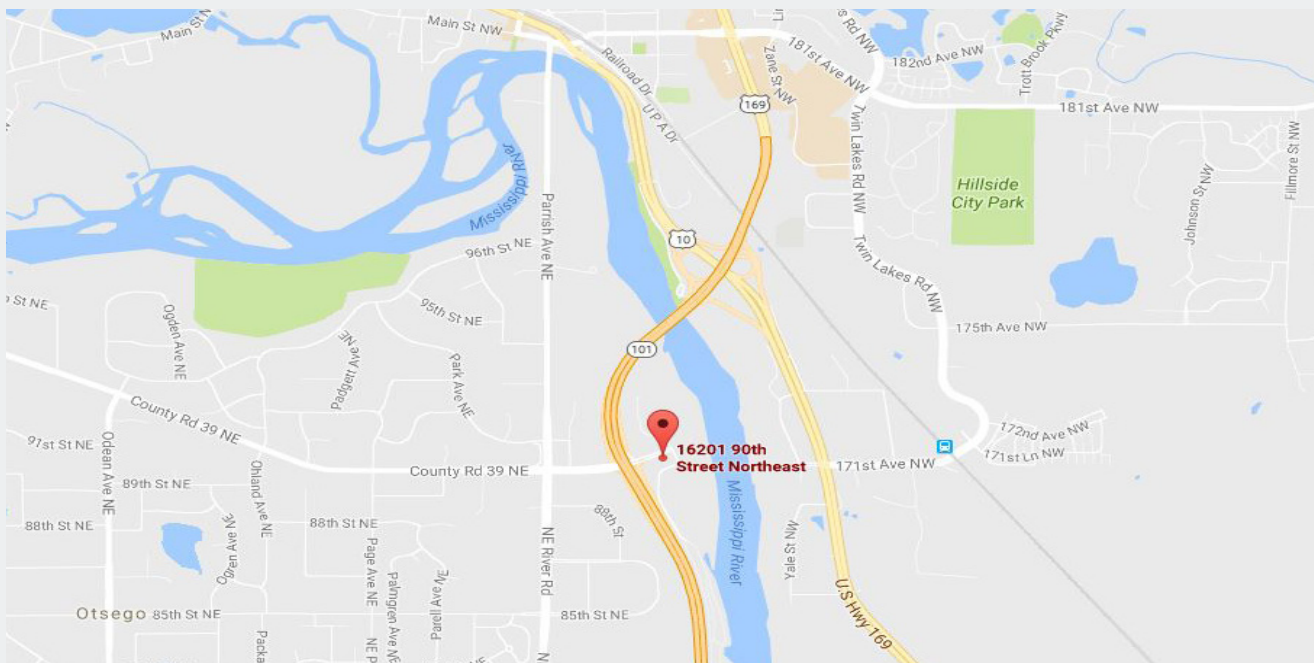
## Arrow Companies

7365 Kirkwood Court N. Suite 335  
Maple Grove, MN 55369

[www.arrowcos.com](http://www.arrowcos.com)

## AERIAL & MAP

**FOR LEASE** - 2,000 to 11,750 SF of Office Space



### Contact

Phone: 763.424.6355

Fax: 763.424.7980

### Arrow Companies

7365 Kirkwood Court N. Suite 335

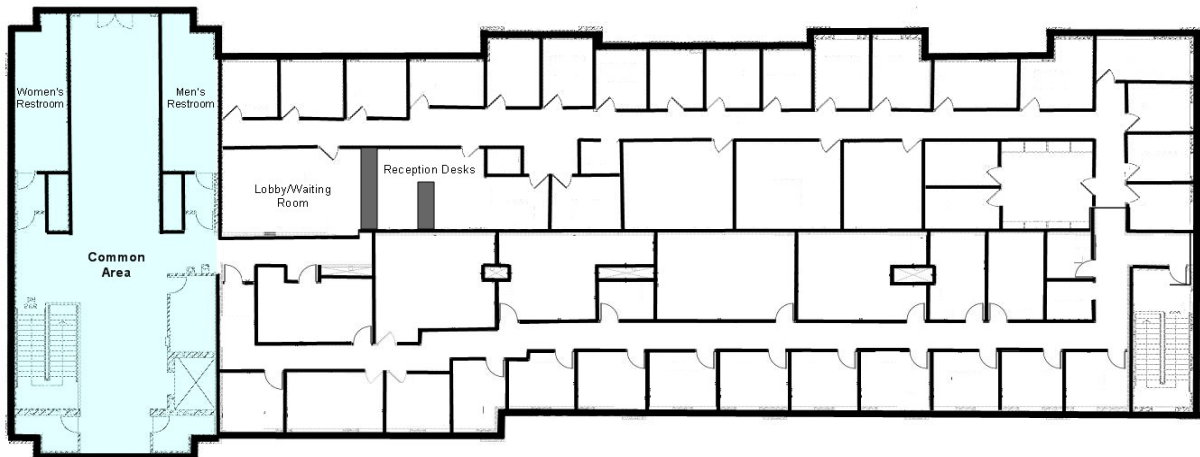
Maple Grove, MN 55369

[www.arrowcos.com](http://www.arrowcos.com)



**FLOOR PLAN**

**FOR LEASE** - 2,000 to 11,750 SF of Office Space



**SECOND LEVEL**

**Contact**

Phone: 763.424.6355  
Fax: 763.424.7980

**Arrow Companies**

7365 Kirkwood Court N. Suite 335  
Maple Grove, MN 55369

[www.arrowcos.com](http://www.arrowcos.com)

## AREA BUSINESSES

**FOR LEASE** - 2,000 to 11,750 SF of Office Space



### Contact

Phone: 763.424.6355

Fax: 763.424.7980

### Arrow Companies

7365 Kirkwood Court N. Suite 335

Maple Grove, MN 55369

[www.arrowcos.com](http://www.arrowcos.com)

## PHOTO GALLERY

**FOR LEASE** - 2,000 to 11,750 SF of Office Space



First Floor Entry



First Floor Entry



Second Level Common Area



Reception/Lobby Area



Break Room



Filing/Supply Room

### Contact

Phone: 763.424.6355

Fax: 763.424.7980

### Arrow Companies

7365 Kirkwood Court N. Suite 335

Maple Grove, MN 55369

[www.arrowcos.com](http://www.arrowcos.com)



## PHOTO GALLERY

**FOR LEASE** - 2,000 to 11,750 SF of Office Space



Group Room



Group Room



Office



Office



Cubical Area



2nd Waiting Room

### Contact

Phone: 763.424.6355

Fax: 763.424.7980

### Arrow Companies

7365 Kirkwood Court N. Suite 335

Maple Grove, MN 55369

[www.arrowcos.com](http://www.arrowcos.com)

## OUTSIDE GALLERY

**FOR LEASE** - 2,000 to 11,750 SF of Office Space



### Contact

Phone: 763.424.6355

Fax: 763.424.7980

### Arrow Companies

7365 Kirkwood Court N. Suite 335

Maple Grove, MN 55369

[www.arrowcos.com](http://www.arrowcos.com)