

**FOR LEASE** - Beautiful Office Space!

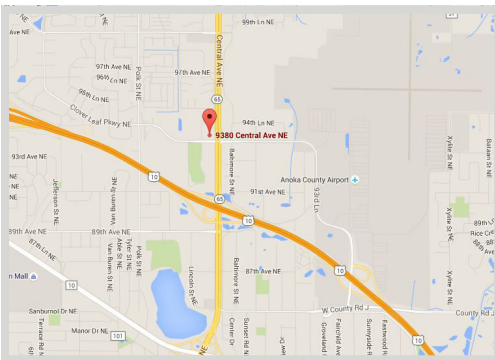


**FEATURES:**

- High visibility from Hwy 65 with easy access to Hwy 610 & I-35W
- Monument signage available
- Electronic security access to building
- Break room & vending on site (2nd floor)

Lease Rate

**\$18.00/psf Gross**



**Availability:**

**Suite 314**

- ▲ 990 SF
- ▲ Reception area & 3 offices
- ▲ Access to exterior patio

Overview .....	1
Aerial Maps .....	2
Site Plan .....	3
Floor Plan .....	4
Suite 314 Photo Gallery ....	5
Outside Gallery .....	6



**Chad Weeks**  
612.619.9911  
cweeks@arrowcos.com



**Jeff Penfield**  
612.325.2067  
jpenfield@arrowcos.com

**Contact**

Phone: 763.424.6355  
Fax: 763.424.7980

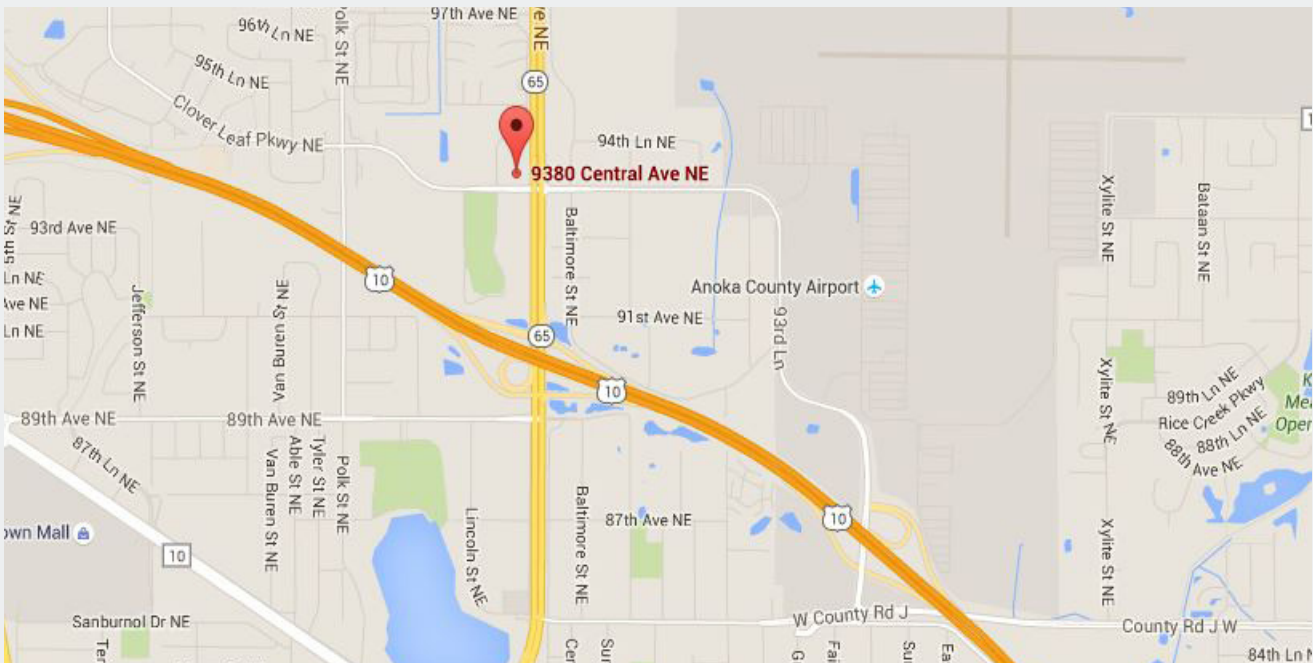
**Arrow Companies**  
7365 Kirkwood Court N. Suite 335  
Maple Grove, MN 55369

[www.arrowcos.com](http://www.arrowcos.com)



**AERIAL & MAP**

**FOR LEASE** - Beautiful Office Space!



**Contact**

Phone: 763.424.6355  
Fax: 763.424.7980

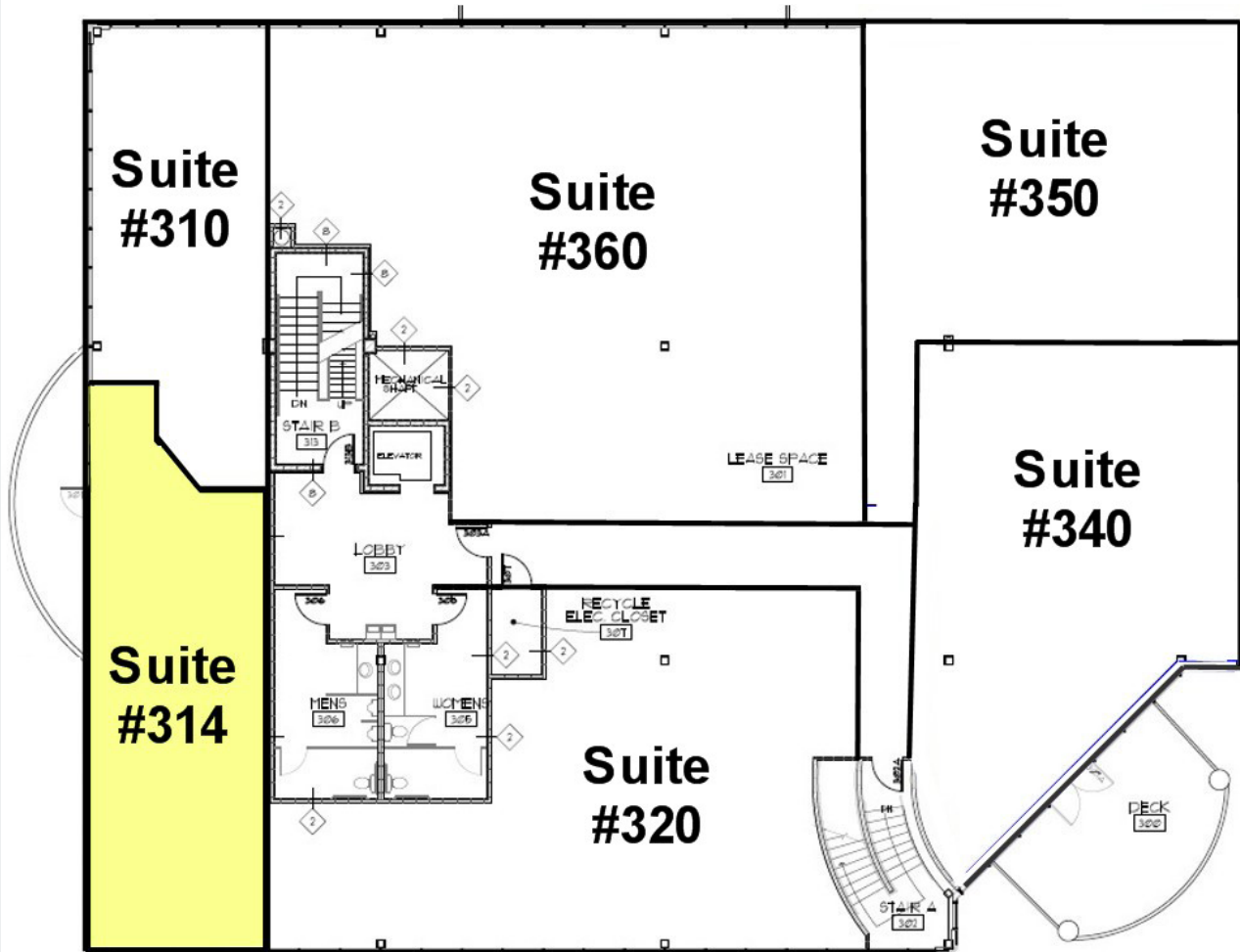
**Arrow Companies**

7365 Kirkwood Court N. Suite 335  
Maple Grove, MN 55369

[www.arrowcos.com](http://www.arrowcos.com)

**SITE PLAN**

**FOR LEASE** - Beautiful Office Space!



**3RD FLOOR**

**Contact**

Phone: 763.424.6355  
Fax: 763.424.7980

**Arrow Companies**

7365 Kirkwood Court N. Suite 335  
Maple Grove, MN 55369

[www.arrowcos.com](http://www.arrowcos.com)

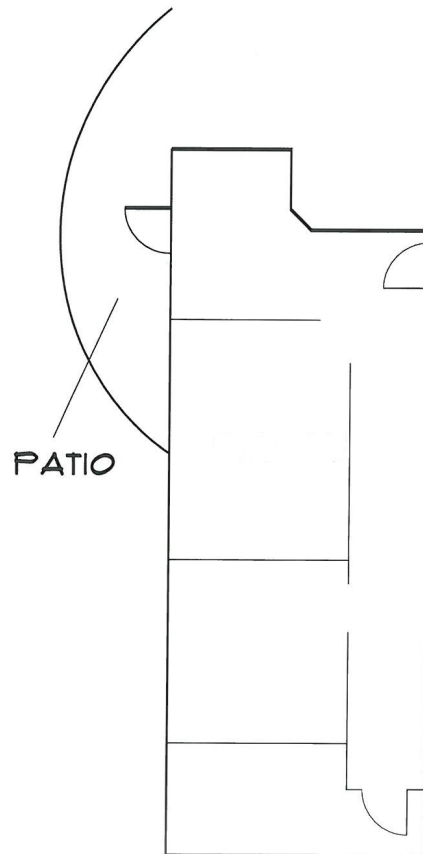
**FLOOR PLAN**

**FOR LEASE** - Beautiful Office Space!

**21ST CENTURY BANK BUILDING**

**3rd Floor - Suite 314**

- **990 Square Feet**



**SUITE 314**

**Contact**

Phone: 763.424.6355  
Fax: 763.424.7980

**Arrow Companies**

7365 Kirkwood Court N. Suite 335  
Maple Grove, MN 55369

[www.arrowcos.com](http://www.arrowcos.com)



**PHOTO GALLERY  
SUITE 314**

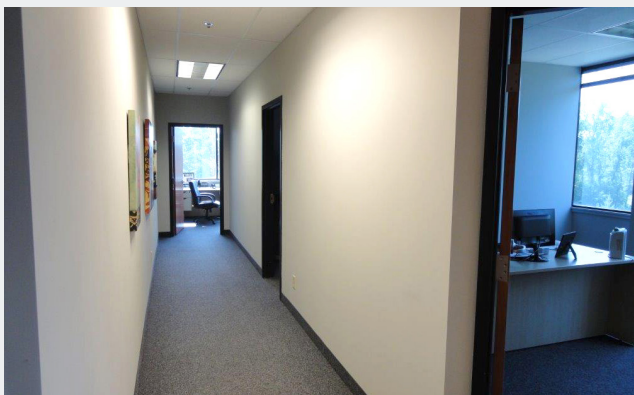
**FOR LEASE** - Beautiful Office Space!



Reception Area



Reception Area



Hallway



Office



Office

**Contact**

Phone: 763.424.6355  
Fax: 763.424.7980

**Arrow Companies**

7365 Kirkwood Court N. Suite 335  
Maple Grove, MN 55369

[www.arrowcos.com](http://www.arrowcos.com)

**OUTSIDE GALLERY**

**FOR LEASE** - Beautiful Office Space!



Front View

**2015 Population Estimate**

1 mile radius	5,674
3 mile radius	66,078
5 mile radius	188,061

**2020 Population Projection**

1 mile radius	5,871
3 mile radius	68,628
5 mile radius	196,116



Back Entry



Front of Building

**Daily Traffic Report**

Hwy 65	49,656
93rd Lane NE	13,272
Clover Leaf Pkwy	7,041



Aerial Shot

**Contact**

Phone: 763.424.6355  
Fax: 763.424.7980

**Arrow Companies**

7365 Kirkwood Court N. Suite 335  
Maple Grove, MN 55369

[www.arrowcos.com](http://www.arrowcos.com)