

**FOR LEASE**  
**1,532 SF AVAILABLE**



**FEATURES:**

- Underground parking available along with ample parking
- Great visibility off of Hwy. 94 in Maple Grove, MN
- Located near Maple Grove Hospital and many retail stores including Target, Walmart, Home Depot, Menards & Haskell's

**Lease Rate:**

**\$16 - \$18 / psf NNN**

Tax: \$4.54 / psf Cam: \$7.20 / psf



**Availability:**

**3rd Floor:**  
Suite 300 - 1,532 SF (Avail. Now)

Overview . . . . . 1  
Aerial Maps . . . . . 2  
Floor Plans . . . . . 3  
Photo Gallery . . . . . 4  
City Info . . . . . 5



**Steve Fischer**  
612.619.9991  
sfischer@arrowcos.com



**Chad Weeks**  
612.619.9911  
cweeks@arrowcos.com

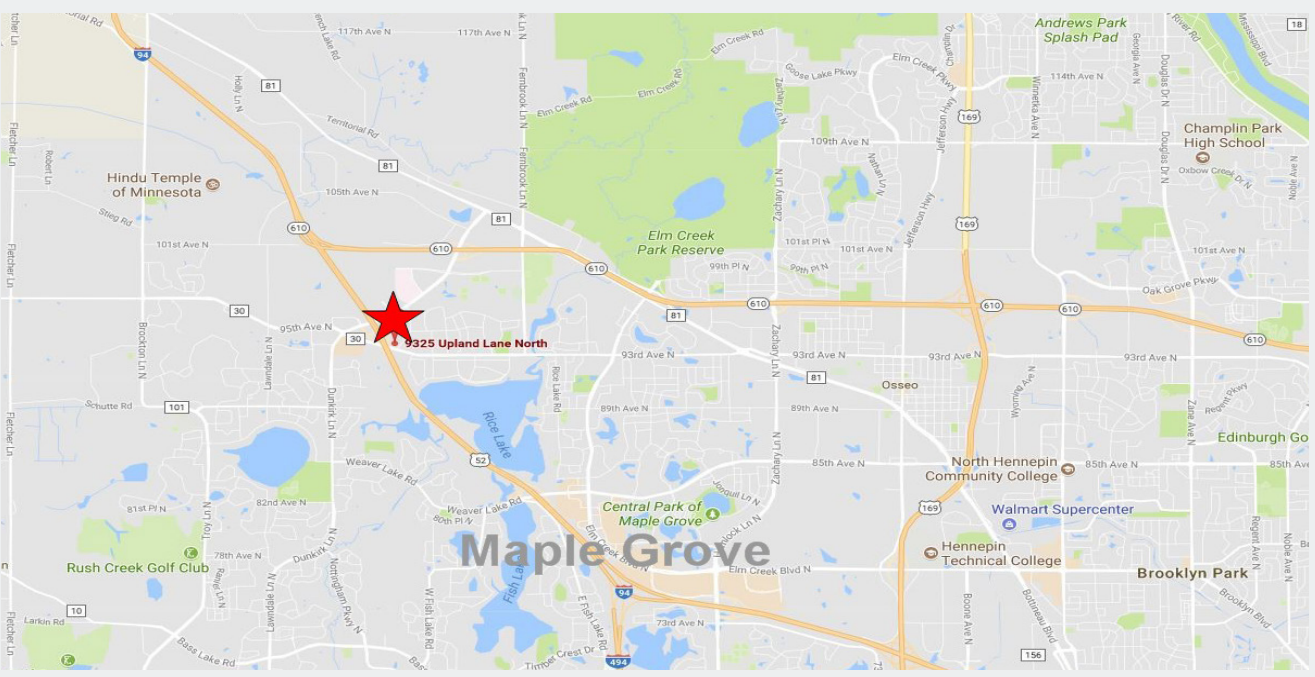
**Contact**

Phone: 763.424.6355  
Fax: 763.424.7980

**Arrow Companies**  
7365 Kirkwood Court N. Suite 335  
Maple Grove, MN 55369

**AERIAL & MAP**

**FOR LEASE**  
**1,532 SF AVAILABLE**



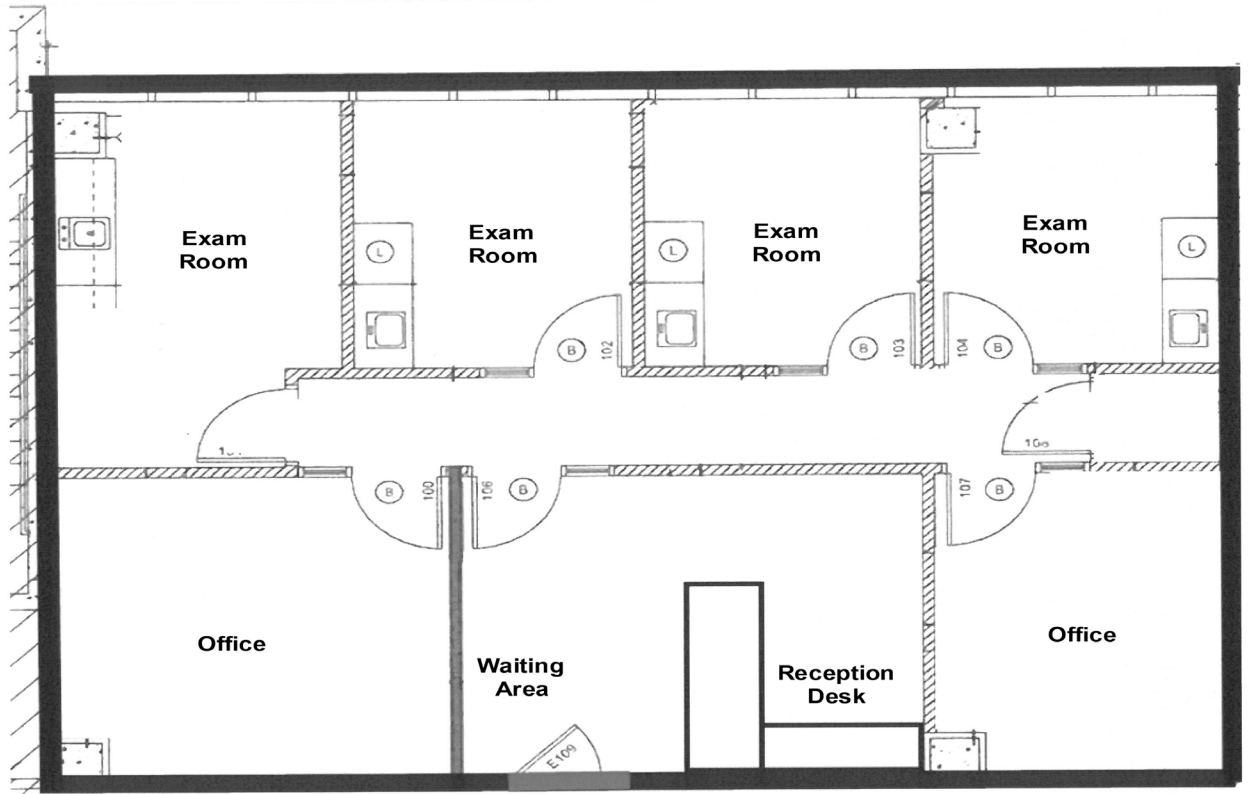
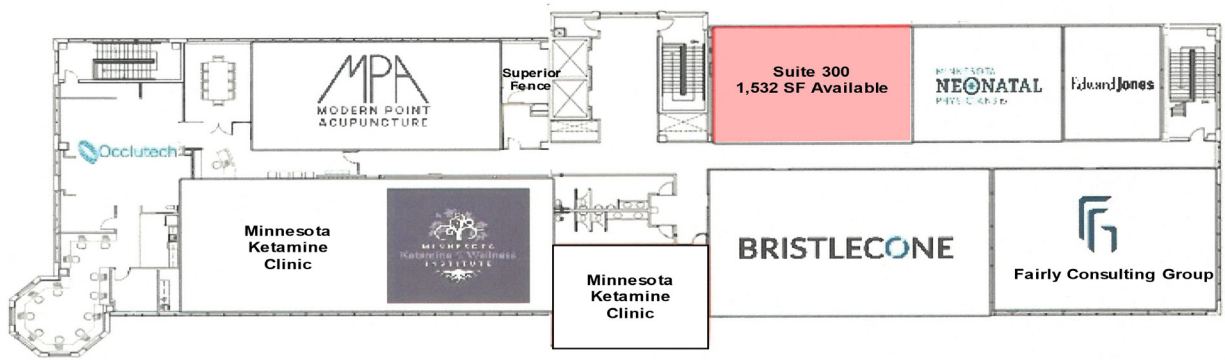
**Contact**  
Phone: 763.424.6355  
Fax: 763.424.7980

**Arrow Companies**  
7365 Kirkwood Court N. Suite 335  
Maple Grove, MN 55369

[www.arrowcos.com](http://www.arrowcos.com)

**3RD LEVEL  
FLOOR PLAN**

**FOR LEASE  
1,532 SF AVAILABLE**



**PHOTO GALLERY**

**FOR LEASE**  
**1,532 SF AVAILABLE**





**CITY INFORMATION**

**FOR LEASE  
 1,532 SF AVAILABLE**

<p><b>POPULATION        (5 MILE RADIUS)</b></p>	<p>2010 Census - 78,998          2023 (Estimate) - 64,623          2028 (Projection) - 96,463</p>
<p><b>AVERAGE HOUSEHOLD        INCOME</b></p>	<p>2023 (Estimate) - \$140,879</p>
<p><b>TRAFFIC</b></p>	<p>93rd Ave. - 13,463 vehicles per day          Maple Grove Pkwy - 27,222 vehicles per day</p>
<p><b>CITY OF MAPLE GROVE</b></p>	<p>Maple Grove is a flourishing community in the Twin Cities metro area that over 61,000 residents proudly call home. Just twenty minutes from Minneapolis and forty-five minutes from the Minneapolis/St. Paul International Airport, citizens receive every amenity of a large city and the peace and charm of a small town.</p> <p>Set within the heart of Hennepin County, Maple Grove's vibrant history dates back to the mid 1800s when the Winnebago Indians were settled in the area. Today, over 1,000 businesses operate in this progressive city which offers people quality health-care, year-round recreational activities, and an excellent standard of living.</p> <p>Rated high by citizens as a great place to raise children, Maple Grove offers plenty of opportunities for residents to live life to the fullest. Looking for something to do with the family? Look no further than the Maple Grove Community Center which has indoor/outdoor play-grounds, ice skating, indoor/outdoor pools, and picnic area. It is also the site of the Maple Grove Farmers Market where fresh food and fun are in abundance. Check out the many community concerts and family activities at the Town Green. Don't miss the annual Maple Grove Days festivities in July and numerous community events sponsored by local businesses and community organizations.</p> <p>Maple Grove is also a great place for commerce and has a solid business community in which a number of highly regarded businesses continue to thrive.</p> <p>Maple Grove has a wide range of housing options available; from rental to charming single family homes to townhouses with scenic views to exciting senior living communities and everything in between. Most of the developments come complete with play areas which are perfect for those with families or looking to start a family. Subdivisions are also within close proximity to multiple shopping and dining options so convenience is something that's around every corner.</p>