



**INDUSTRIAL BUILDING**  
5500 Quam Ave. NE  
St. Michael, MN 55376

**FOR LEASE**  
**10,000 SF AVAILABLE**



**FEATURES:**

- 10,000 SF Industrial Building Available FOR LEASE in St. Michael, MN
- Visibility off Hwy. 101
- 480 volt / 400 amps / 3-phase Power
- Secured gated access with outdoor storage.

**LEASE RATE**  
**NEGOTIABLE**  
(Utilities separate)



**FACTS**

- 10,000 SF (1,120 SF Office / 8,880 SF Whse)
- (1) 12' x 14' Drive In Door
- (1) 8' x 10' Dock Door
- 15' Clear Height
- Built in 1990
- 1.55 acre site

Overview ..... 1  
 Aerial Maps / Site Plan..... 2-3  
 Floor Plan ..... 4  
 Photo Gallery ..... 5



**Chad Weeks**  
612.619.9911  
cweeks@arrowcos.com



**Jeff Penfield**  
612.325.2067  
jpenfield@arrowcos.com

**Contact**

Phone: 763.424.6355  
Fax: 763.424.7980

**Arrow Companies**  
7365 Kirkwood Court N. Suite 335  
Maple Grove, MN 55369

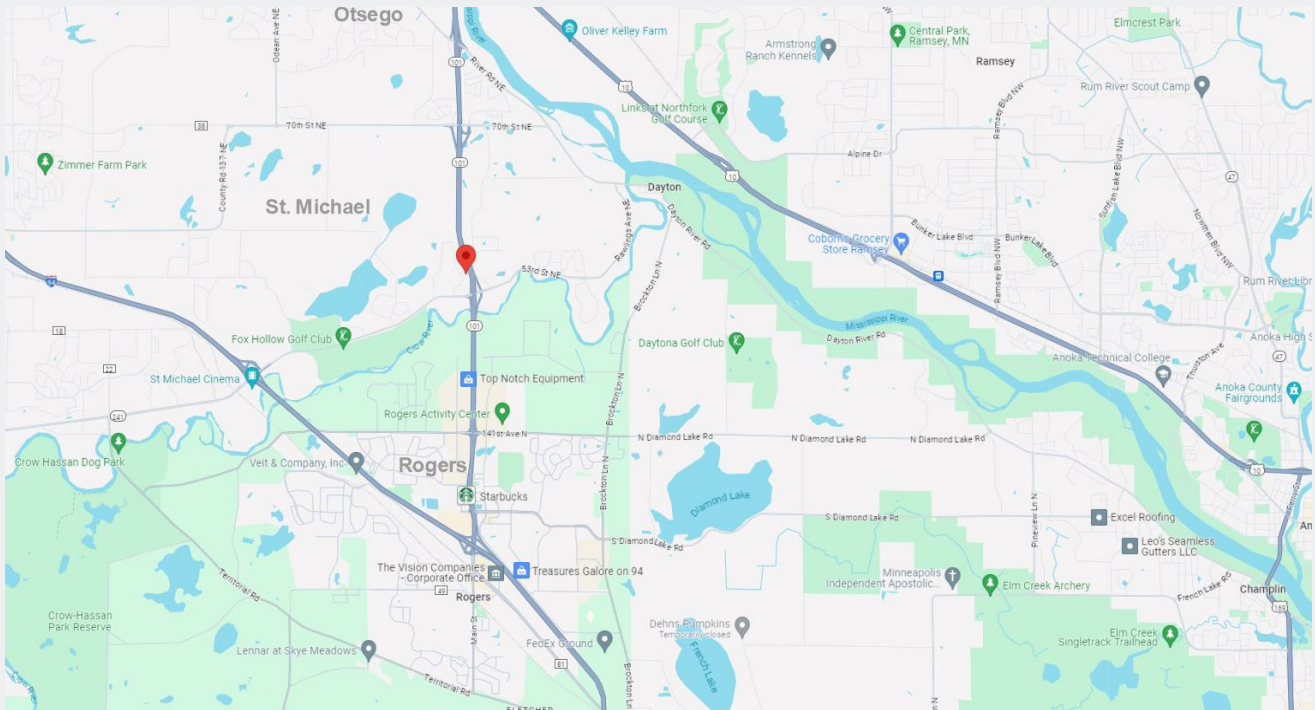
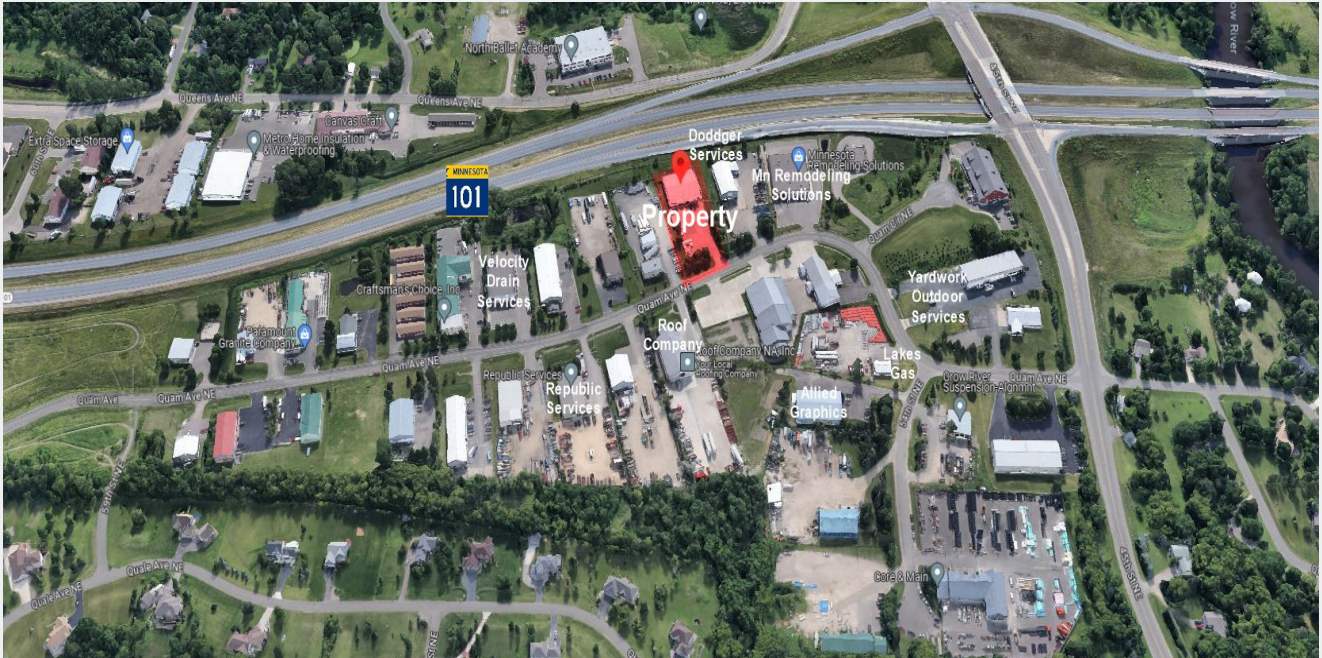
[www.arrowcos.com](http://www.arrowcos.com)



**INDUSTRIAL BUILDING**  
5500 Quam Ave. NE  
St. Michael, MN 55376

**AERIAL & MAP**

**FOR LEASE**  
**10,000 SF AVAILABLE**



**Contact**  
Phone: 763.424.6355  
Fax: 763.424.7980

**Arrow Companies**  
7365 Kirkwood Court N. Suite 335  
Maple Grove, MN 55369

[www.arrowcos.com](http://www.arrowcos.com)

**SITE PLAN**

**FOR LEASE**  
**10,000 SF AVAILABLE**

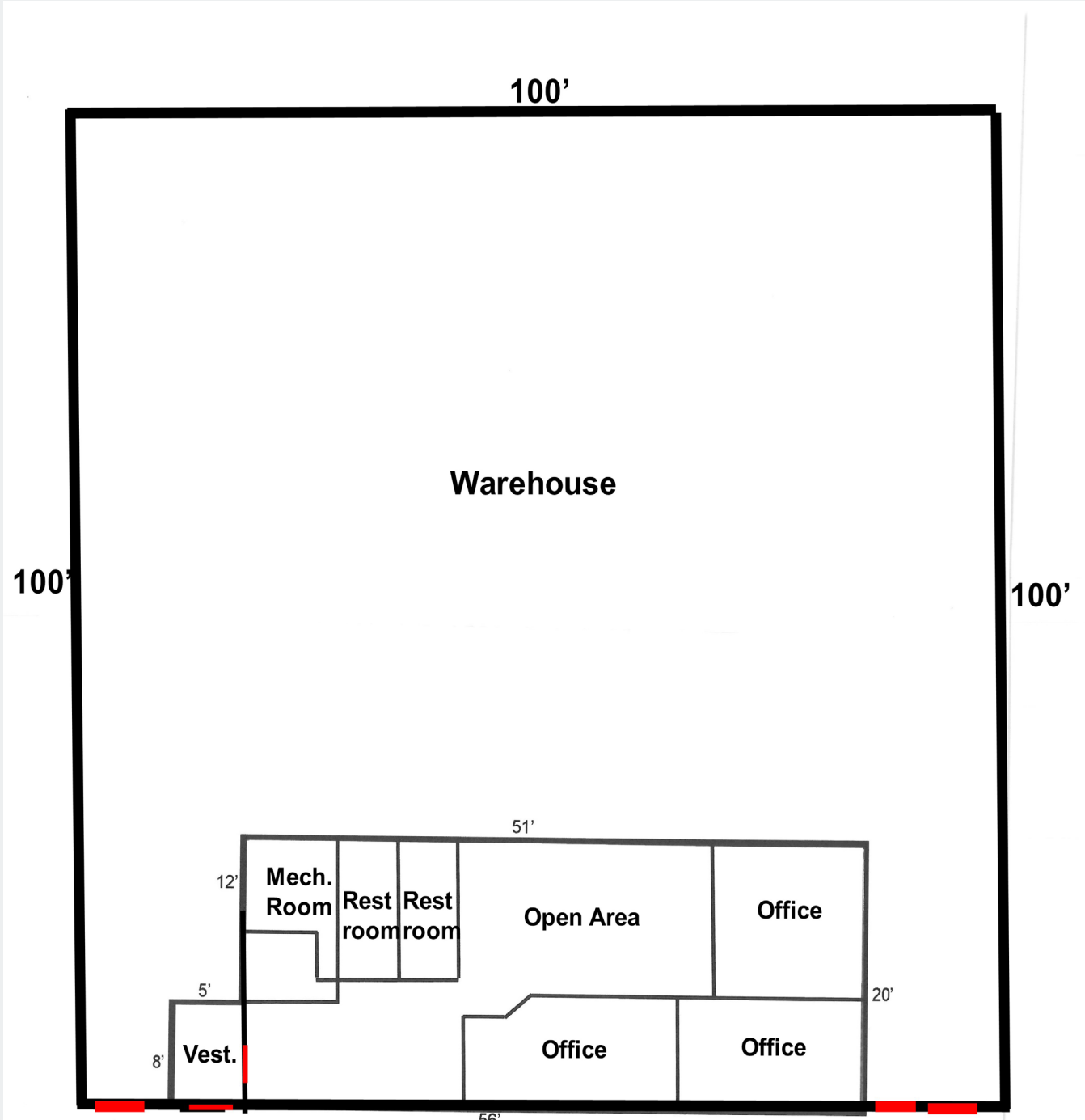




**INDUSTRIAL BUILDING**  
5500 Quam Ave. NE  
St. Michael, MN 55376

**FLOOR PLAN**

**FOR LEASE**  
**10,000 SF AVAILABLE**



Contact  
Phone: 763.424.6355  
Fax: 763.424.7980

Arrow Companies  
7365 Kirkwood Court N. Suite 335  
Maple Grove, MN 55369

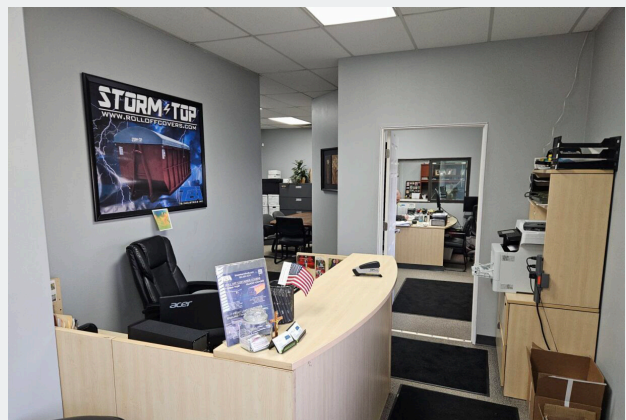
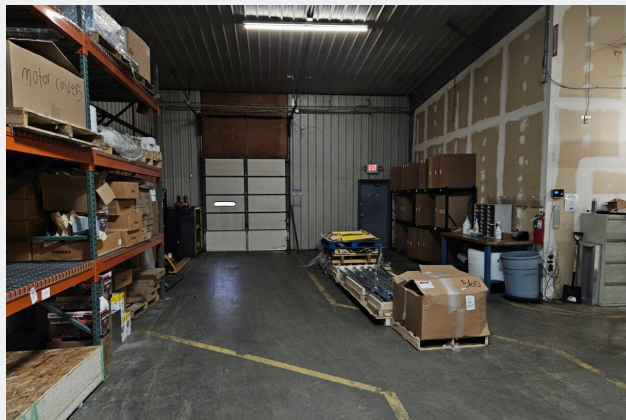
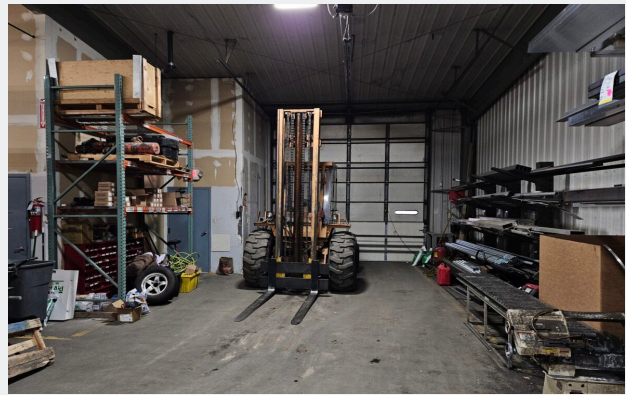
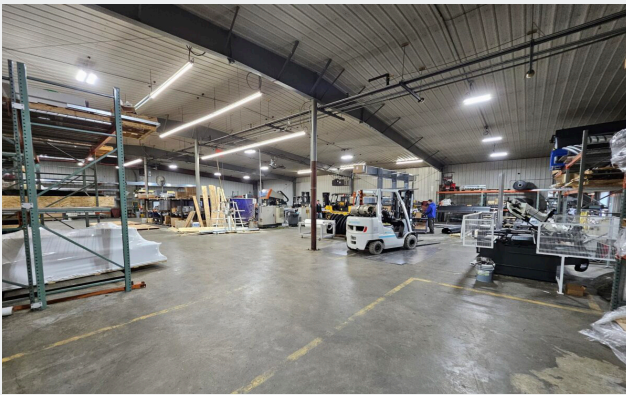
[www.arrowcos.com](http://www.arrowcos.com)



**INDUSTRIAL BUILDING**  
5500 Quam Ave. NE  
St. Michael, MN 55376

**PHOTO GALLERY**

**FOR LEASE**  
**10,000 SF AVAILABLE**



**Contact**  
Phone: 763.424.6355  
Fax: 763.424.7980

**Arrow Companies**  
7365 Kirkwood Court N. Suite 335  
Maple Grove, MN 55369

[www.arrowcos.com](http://www.arrowcos.com)