



# Tonkawood Office Park

16200 State Hwy. 7  
Minnetonka, MN 55435

**FOR LEASE**  
**1,444 SF Office Condo Available**



### FEATURES:

- FOR LEASE - 1,444 SF Lower Level Office Condo which includes 4 offices.
- High end upgrades throughout including trim, doors & lighting.
- End-cap with plenty of windows and light.
- Kitchenette, private bathroom & walkout patio.
- Great location off Hwy. 7 in Minnetonka, MN.

**Lease Rate:**  
**\$15 / psf NNN**  
 \$4.00 / psf (Tax)  
 \$2.00 / psf (Cam)

Overview .....	1
Aerial Maps .....	2
Floor Plans .....	3
Photos .....	4



**Chad Weeks**  
 612.619.9911  
[cweeks@arrowcos.com](mailto:cweeks@arrowcos.com)



**Jeff Penfield**  
 612.325.2067  
[jpenfield@arrowcos.com](mailto:jpenfield@arrowcos.com)

### Contact

Phone: 763.424.6355  
 Fax: 763.424.7980

Arrow Companies  
 7365 Kirkwood Court N. Suite 335  
 Maple Grove, MN 55369

[www.arrowcos.com](http://www.arrowcos.com)

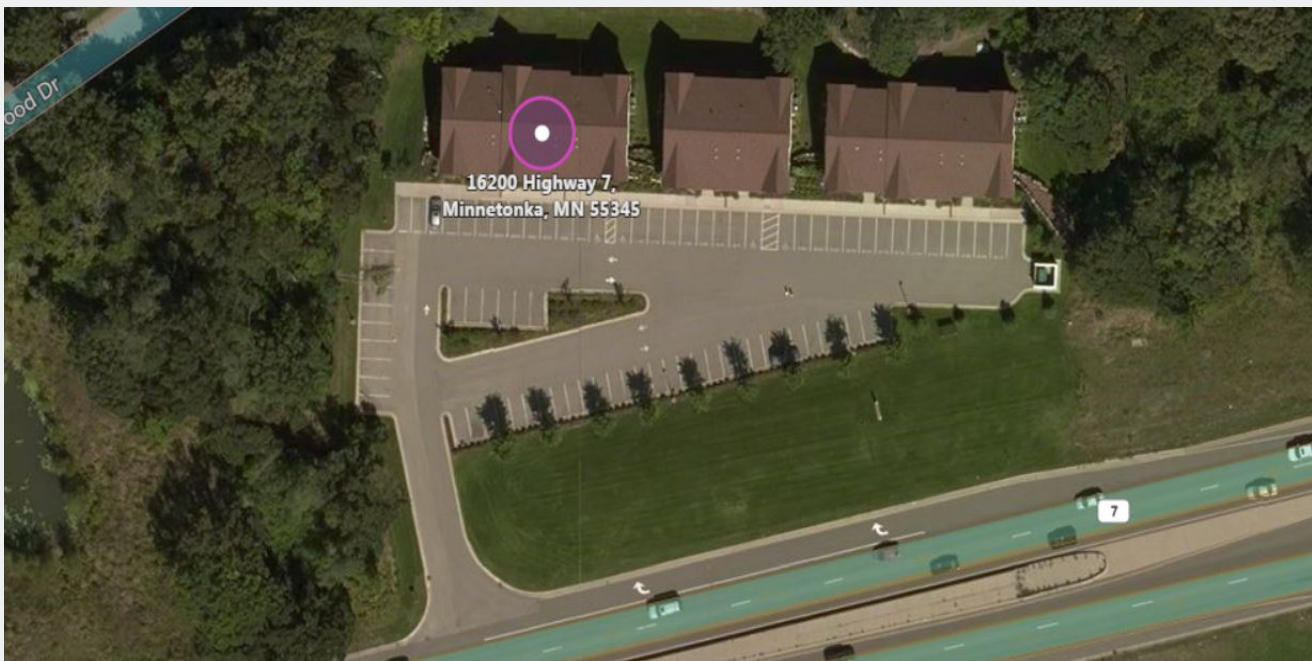


# Tonkawood Office Park

16200 State Hwy. 7  
Minnetonka, MN 55435

AERIAL & MAP

FOR LEASE  
1,444 SF Office Condo Available



### Contact

Phone: 763.424.6355  
Fax: 763.424.7980

Arrow Companies  
7365 Kirkwood Court N. Suite 335  
Maple Grove, MN 55369

[www.arrowcos.com](http://www.arrowcos.com)

FLOOR PLAN

**FOR LEASE**  
1,444 SF Office Condo Available

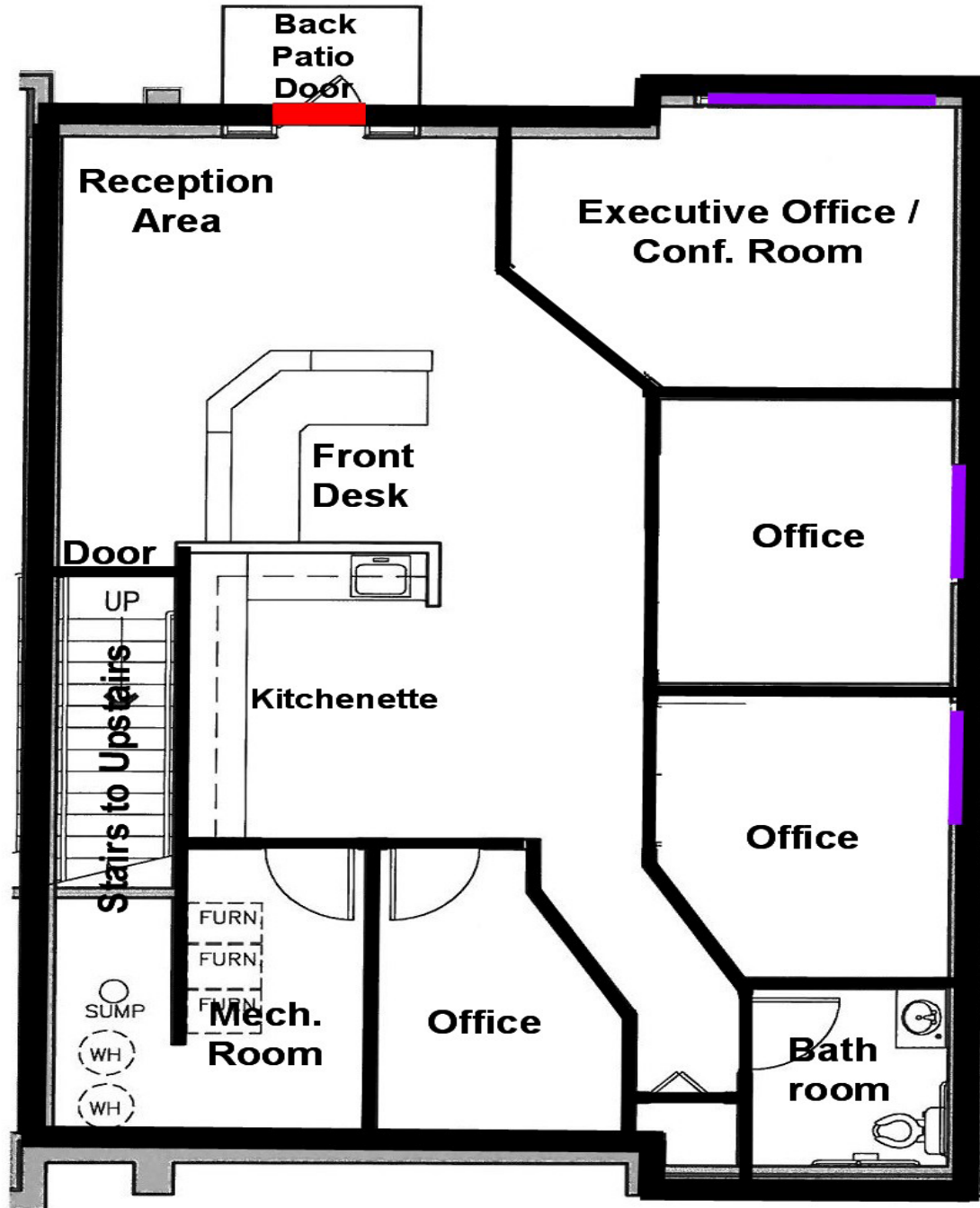


PHOTO GALLERY

**FOR LEASE**  
**1,444 SF Office Condo Available**



Reception Area



Reception Area



Executive Office / Conf. Room



Private Office



Kitchen Area



Front View

Contact

Phone: 763.424.6355

Fax: 763.424.7980

Arrow Companies

7365 Kirkwood Court N. Suite 335

Maple Grove, MN 55369

[www.arrowcos.com](http://www.arrowcos.com)